

Asian Development Bank Institute

Address in English:

8F Kasumigaseki Building, 3-2-5, Kasumigaseki, Chiyoda-ku, Tokyo 100-6008, Japan

Tel: +81 3 3593 5500

Website: www.adbi.org

Access: <https://www.adb.org/adbi/contact#adbi-metro>

Address in Japanese:

東京都千代田区霞ヶ関 3-2-5 霞ヶ関ビルディング 8階

〒100-6008

電話: +81 3 3593 5500

ホームページ: www.adbi.org

アクセス: <https://www.adb.org/adbi/contact#adbi-metro>

Photos of Kasumigaseki Building



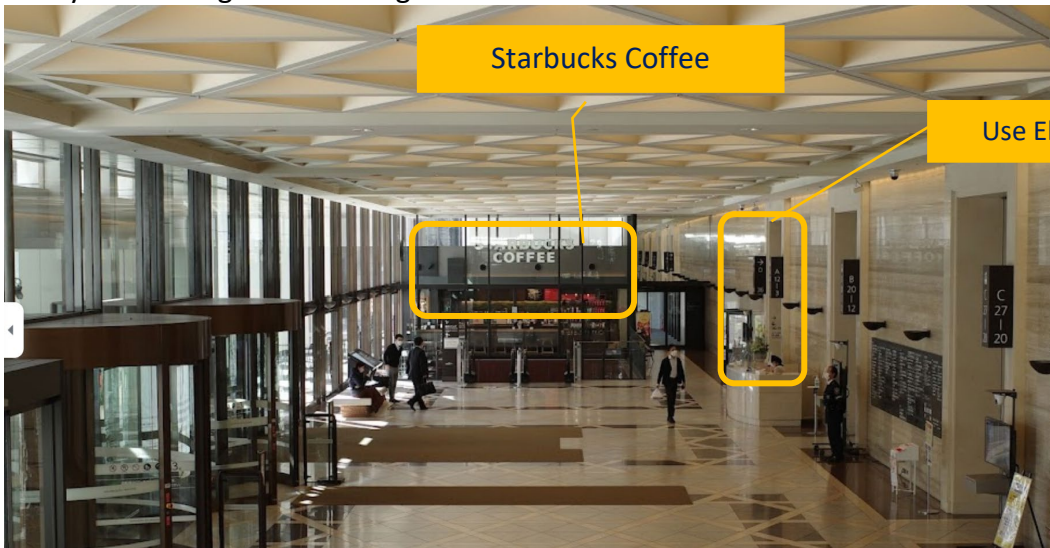
Entrance of
Kasumigaseki Building



Entrance of Kasumigaseki Building

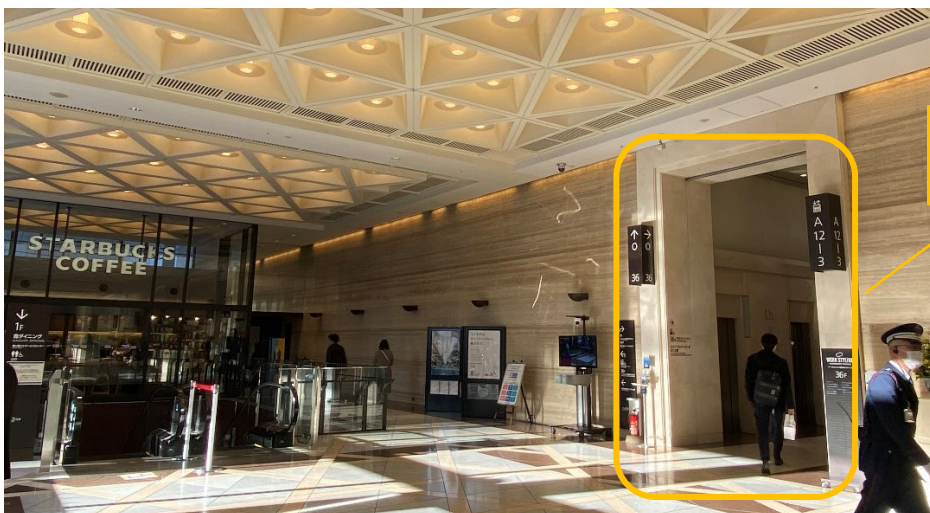
Starbucks Coffee

Lobby of Kasumigaseki Building



Starbucks Coffee

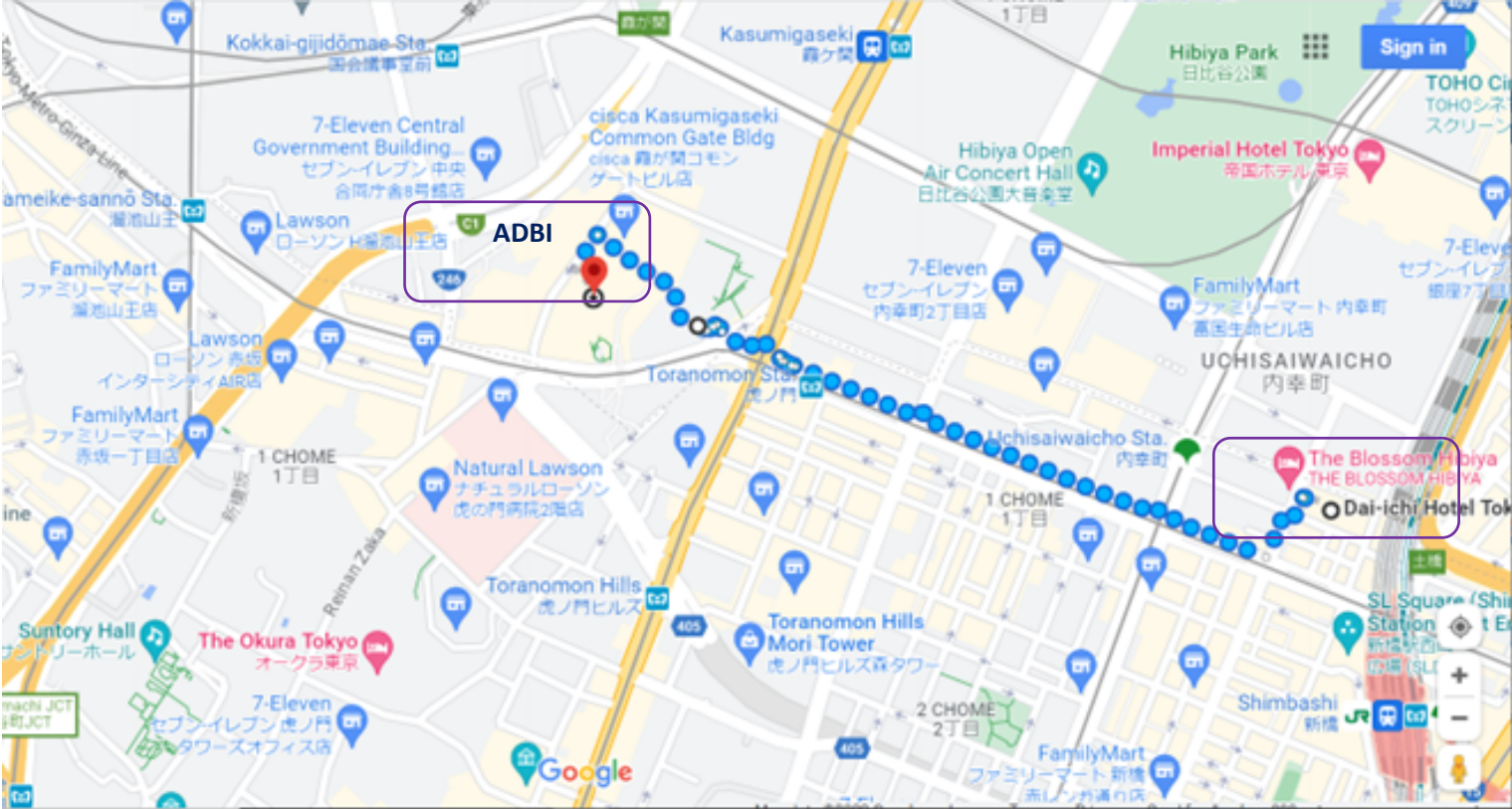
Use Elevators "A" 3-12F



Use Elevators "A" 3-12F

Access from Dai-ichi Hotel, Tokyo

about 15mins on foot



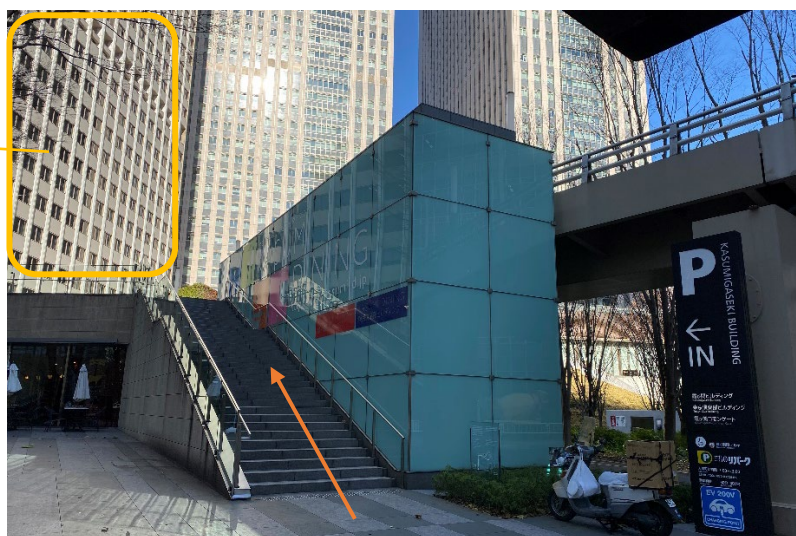
Access by Taxi

Present to Taxi Driver: 霞ヶ関ビルまでお願いします。



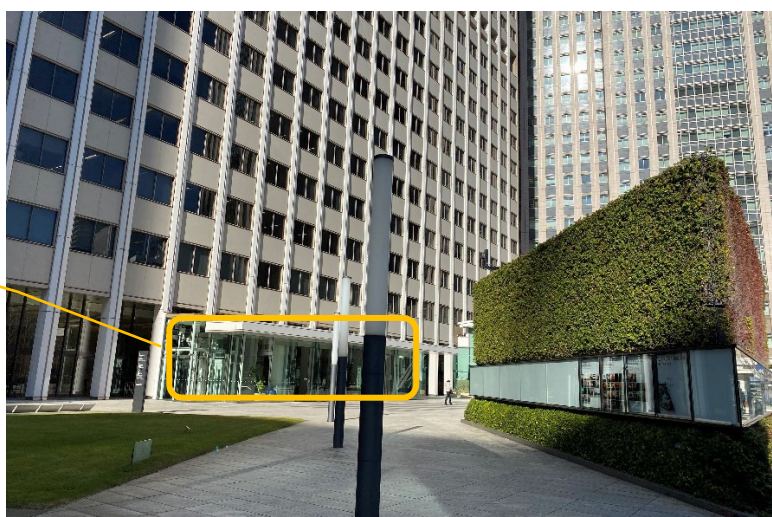
Get off taxi

Kasumigaseki Building



Stairs of left-hand side. Go upstairs.

Entrance of
Kasumigaseki Building



Enter from glass door entrance.


Access by Metro

ACCESS TO ASIAN DEVELOPMENT BANK INSTITUTE

Kasumigaseki Building 8F, 3-2-5, Kasumigaseki, Chiyoda-ku, Tokyo 100-6008, Japan






Toranomon Station

 Ginza Line

Exit 11
1-minute walk from the exit

1. Come out of the exit and continue walking straight.
2. Take the stairs or escalators to Kasumigaseki Common Gate and cross the open space. The building in front of you is the Kasumigaseki Building.

Kasumigaseki Station

 Marunouchi Line  Hibiya Line  Chiyoda Line

Exit A13
6-minute walk from exit

1. Come out of the exit and continue walking straight. Walk towards Tokyo Tower, visible ahead.
2. At the first intersection, cross the pedestrian crossing and continue along this street which curves slightly right.
3. Keep the brown brick building on your right. Turn right at the end of this building.
4. Take the stairs or escalators to Kasumigaseki Common Gate and cross the open space. The building in front of you is the Kasumigaseki Building.

Dai-ichi Hotel

Address in English

105-8621

1-2-6 Shimbashi, Minato-ku, Tokyo TEL +81-3-3501-4411

Website: <https://www.hankyu-hotel.com/en/hotel/dh/dhtokyo>

Access: <https://www.hankyu-hotel.com/en/hotel/dh/dhtokyo/access>

Airport Limousine Bus Timetable ([Airport Limousine Bus](#)) >>

NOTE:

Airport to hotel Limousine Bus from Narita is available.

Limousine Bus is from Haneda Airport to hotel is OUT OF SERVICE.

Address in Japanese

〒105-8621

東京都港区新橋1丁目2番6号

ウェブサイト：<https://www.hankyu-hotel.com/hotel/dh/dhtokyo>

アクセス：<https://www.hankyu-hotel.com/hotel/dh/dhtokyo/access>



Suggested transportation from Haneda the airport

<<Train & Monorail >>

Tokyo monorail & JR

Website: <https://www.tokyo-monorail.co.jp/english/>

Tokyo monorail Haneda Airport Terminal 3 Station to Hamamatsucho Station, then transit JR Yamanote Line (Green Line) or JR Keihin-tohoku Line (Blue Line) to Shimbashi Station. (Bound for Tokyo or Ueno) 1stop from Hamamatsucho Station.

Bounds for Monorail Hamamatsucho, Haneda Express (Every 10 minutes) 13 minutes. 500 Yen.

JR Hamamatsucho to Shimbashi 2 minutes (Every 5 minutes) 150 Yen.

The hotel is a two-minute walk from the Hibiya Exit of JR Shimbashi Station, exiting through the North Exit ticket gates.

<<Traffic congestion forecast due to highway construction>>

the express highway route from/to Haneda Airport from 27 May (5:00am) to 10 June (5:00am) is predicted to have a very heavy traffic jam due to the Daishi Bridge replacement.

According to the Metropolitan Express Highway Company (MEHC), the time taken from/to central of Tokyo to/from **HANEDA Airport is presumed to reach 40-60min.** instead of 20-40 min.

Perhaps this will also make trains connected to Haneda Airport crowded during that period. Please kindly make you sure to have enough buffer time from/to HANEDA Airport.