

Tax Administration vs. Tax Rates: Evidence from Corporate Taxation in Indonesia

M. Chatib Basri, Mayara Felix, Rema Hanna, and Benjamin A. Olken*

August 14, 2019

Abstract

Developing countries collect a far lower share of GDP in taxes than richer countries. This paper asks whether changes in tax administration and tax rates can nevertheless raise substantial additional revenue – and if so, which approach is most effective. We study corporate taxation in Indonesia, where the government implemented two reforms that differentially affected firms. First, we show that increasing tax administration intensity by moving the top firms in each region into “Medium-Sized Taxpayer Offices,” with much higher staff-to-taxpayer ratios, more than doubled tax revenue from affected firms over six years, with increasing impacts over time. Second, using non-linear changes to the corporate income tax schedule, we estimate an elasticity of taxable income of 0.59, which implies that the revenue-maximizing rate is almost double the current rate. The increased revenue from improvements in tax administration is equivalent to raising the marginal corporate tax rate on affected firms by about 23 percentage points. We suggest one reason improved tax administration was so effective was that it flattened the relationship between firm size and enforcement, removing the additional “enforcement tax” on large firms. On net, our results suggest that improving tax administration can have significant returns for developing country governments.

*Basri: University of Indonesia. Felix and Olken: MIT. Hanna: Harvard Kennedy School. We thank Michael Best, Lucie Gadenne, Henrik Kleven, Dina Pomeranz, James Poterba, Danny Yagan, and Owen Zidar for helpful comments and discussion. We thank the Indonesian Ministry of Finance and the Directorate General of Taxation, in particular Sri Mulyani Indrawati, Bambang Brodjonegoro, Robert Pakpahan, Luky Alfirman, Suahasil Nazara, Puspita Wulandari, Arfan, Peni Hirjanto, Yon Arsal, Harry Gumelar, Romadhaniah, Riana Budiyanti, Aprinto Berlianto, Nur Wahyudi, Wijayanti Kemala, Raden Yulius Wahyu Riyanto, Rudy Yuliyanto Kurniawan, Tibrizi, Harsugi, as well as many other DGT staff for their support and assistance, and thank Aaron Berman, Amri Ilmma, Aqila Putri, Nurul Wakhidah, and Poppy Widayari for outstanding research assistance. Disclosures: Financial assistance from the Australian Government Department of Foreign Affairs and Trade, the J-PAL Government Partnership Initiative, and the National Science Foundation is gratefully acknowledged. Chatib Basri was Minister of Finance of Indonesia, which includes oversight of the Directorate General of Taxation, from 2013-2014, subsequent to the period of reforms that we study in this paper. The views expressed here are those of the authors and do not necessarily reflect those of the many individuals or organizations acknowledged here.

1 Introduction

Low tax revenue is a central challenge in many developing countries. While high-income countries typically collect around 40 percent of their GDP in tax revenue, low-income countries typically collect between 10 and 20 percent. Gordon and Li (2009), Besley and Persson (2014), Kleven et al. (2016), and Jensen (2019), among others, have argued that tax collection is low in developing countries because of fundamental parameters in the economy, such as the informality of employment relationships, limited banking systems, and so on.

One implication of this view is that structural changes to the tax system may have relatively small effects on the margin. That is, this view implicitly suggests that governments are already optimizing given the technological and information environments that they face. Therefore, if developing country governments tried to raise revenue by improving tax administration, the net effect on revenue, after accounting for the additional costs of enforcement, should be small. Likewise, if governments tried to raise revenue by increasing statutory tax rates, a high elasticity of taxable income would mean that the net revenue effects would be small, and deadweight losses imposed large.

We directly investigate these ideas by studying two nationwide reforms to corporate tax policy in Indonesia, one covering tax administration and one covering tax rates. We first study a common corporate tax administration reform – the creation of special tax offices, with higher staff-to-taxpayer ratios – that intensified tax administration for large corporate taxpayers. We compare this with a differential change in the statutory marginal corporate income tax rates enacted several years later, which applied regardless of whether taxpayers were in this special tax enforcement regime. We follow the framework of Keen and Slemrod (2017), who theoretically show that these two approaches can both be analyzed by comparing their effects on net government revenue. Accordingly, for both reforms, we estimate their impacts on actual tax filings and payments using a 9-year firm-level panel of administrative tax data. Importantly, the fact that we consider both reforms in the same context – corporate taxpayers in Indonesia, analyzed using the same administrative tax records – allows us to compare the marginal returns to both types of policies on an equal footing.

The first reform that we study – improvements in tax administration – was the creation of “Medium Taxpayer Offices” (henceforth, MTOs). In virtually all countries, corporate income tax revenues are heavily skewed, with a small number of large taxpayers comprising a considerable share of revenues. Given this, many countries have created special large taxpayer offices to focus on the largest firms in the country; these are present in at least 62 countries (Lemgruber et al., 2015; Almunia and Lopez-Rodriguez, 2018). Despite being

a common policy, there is relatively little evidence on whether these reforms have been effective in the developing world, and if so, on what is the magnitude of the gains relative to the cost of this increased supervision.¹ We study the introduction of such a reform: In the mid-2000s, Indonesia moved the largest several hundred corporate taxpayers in each of its 19 main tax regions to a special MTO in each region that focused exclusively on them. The MTOs are structured identically to the Primary Taxpayer Offices (PTOs) that service all other taxpayers, but have more than triple the staff-to-taxpayer ratio to allow for more intensive supervision of and improved customer service for taxpayers.

To identify the impact of this improved tax administration, we use the fact that selection into the MTOs was based on each taxpayer’s pre-period tax payments and gross revenue. While we know which firms are in the MTO in which years, the original Excel files used to select firms were not archived by the tax authority, and so we cannot recreate the assignment scores and processes exactly. Instead, we match the set of taxpayers included in the MTOs with similar taxpayers based on the level of their pre-period tax payments and gross revenue in 2005, the last tax year unaffected by the reform. Our preferred specification uses the entropy-balancing method of Hainmueller (2012) to create matched treatment and control samples balanced on these covariates, although other matching approaches produce similar results. We show that the treatment and matched control group of taxpayers are on very similar trends prior to the MTOs’ establishment, and then identify the impact of being moved into an MTO using a matched differences-in-differences design.

The introduction of the enhanced tax administration via the MTOs dramatically increased tax revenue. Real total taxes paid for affected taxpayers increased by 128 percent for affected firms; that is, moving firms to the MTOs more than *doubled* average tax collections from these firms over the subsequent six years. The government’s increased costs of administering taxes through the MTOs were minuscule – less than 1 percent of the additional revenue collected – so the net increase in government revenue is almost identical to the gross increase. All types of taxes paid by these firms rose dramatically – corporate income tax payments rose by 87 percent, VAT payments rose by 137 percent, and other tax payments (primarily withholding taxes remitted by firms on behalf of employees) rose by 100 percent. The estimated net revenue increase from this improvement in tax administration,

¹In fact, there is relatively little evidence on these types of reforms even for developed countries. An important exception is Almunia and Lopez-Rodriguez’s (2018) study of Spain. Exploiting the fact that large firms in Spain are monitored by a national large tax office, they show that firms bunch beneath the threshold of inclusion into the LTO, and that those above the threshold report a 20 percent higher valued added tax base than those below.

which covered just 4 percent of all firms, amounts to a lower-bound total effect of IDR 40 trillion (USD 4.0 billion).²

In addition to large changes in revenue, the creation of the MTOs also led to an increase in the reported number of permanent employees, and a higher reported wage bill. This increase in permanent employees provides some suggestive evidence that increased administration may have increased formalization. In short, improved tax administration dramatically increased net government revenues and encouraged formalization.

The second reform that we study is a change in the *de jure* corporate income tax rate schedule. In 2009, Indonesia changed from a system with progressive corporate income tax rates (i.e. a system with three marginal rates, ranging from 15 to 30 percent, with the marginal rate based on a firm's taxable profits) to a flat 28 percent corporate income tax rate, with discounts given as a nonlinear function of a firm's revenues. The flat 28 percent corporate income tax rate was then lowered in 2010 to 25 percent, with a proportionate adjustment to the revenue-based discounting scheme. This differential tax change, in which the marginal tax rate moved from being a function of net *profits* to being a function of gross *revenues*, meant that firms faced different marginal tax rate changes as a nonlinear function of the combination of both their gross and net revenues.

We exploit these changes to estimate the elasticity of taxable income with respect to the net of tax rate. Following Gruber and Saez (2002) and others, we instrument for the change in a firm's marginal tax rate by applying the new tax formula to gross and net revenue reported by the firm in the pre-period. This approach isolates the variation in changes in marginal tax rates stemming only from the tax schedule change, and has strong predictive power, with a first-stage F-statistic of over 3,000.

Using this approach, we estimate an elasticity of taxable income of 0.59. This implies that corporate income taxes in a developing country setting are not vastly more elastic than in developed countries: the estimated ETI for Indonesia is larger than the estimate from Gruber and Rauh (2007) using Compustat data in the United States (0.2), but very close to Dwenger and Steiner's (2012) estimate using a pseudo-panel of German corporate taxpayers' average tax rates (0.6).

Our estimate of the elasticity of taxable income has several implications. First, our

²It is important to note that the dramatically large impact of improved tax administration that we find is not mechanical—the fact that the level of tax collection may be low in a developing country like Indonesia does not necessarily imply, a priori, that the *derivative* of tax collections with respect to improved administration would be high. This is in contrast to, for example, the comparison between *de jure* changes in the tax base and *de jure* tax rates, where, as suggested by Serrato and Zidar (2018), there is a mechanical interaction between tax base and tax rate changes.

estimates imply that the revenue-maximizing corporate income tax rate for Indonesia is 56 percent, substantially higher than the actual 30 percent top marginal tax rate. Thus, there is substantial room for the government to raise additional revenues by raising statutory tax rates should it choose to do so. Indeed, we can reject that Indonesia's corporate income tax rate is above the Laffer rate across all specifications ($p < 0.01$). Second, it implies that the marginal excess burden for taxpayers is 0.51; that is, each dollar of taxes raised through tax rate increases imposes an additional burden of 0.51 on taxpayers.³

The results thus far suggest that – in contrast to the view that revenue is limited solely by structural components of the economy – Indonesia had substantial leeway to raise additional revenue through either improving tax administration or through raising rates. But, we can go further to ask: if the government were to do so, which approach should it use? The fact that we study reforms to tax administration and tax rates in the same context allows us to make progress on answering this question.

One simple calculation that informs this question is to compute, using our estimated ETI, how much marginal tax rates would have had to be increased to raise the same amount of revenue that the government obtained by improving tax administration. The answer is substantial: to obtain the increases in corporate income taxes paid alone, marginal tax rates on the MTO firms would have had to be raised by 23 percentage points (i.e., from 30 percent to 53 percent); alternatively, marginal tax rates on *all* firms in these 19 regions would have had to be raised by 6 percentage points. To achieve the total increase in revenue from improved tax administration, including the higher VAT and withholding payments received, would not have been feasible using corporate income tax rates alone (i.e., that would have required raising rates well above the revenue-maximizing rate).

To compare the welfare impacts of tax administration improvements and tax rate changes, one needs an additional component – namely, the change in firms' administrative costs for complying with the new regime. While this change is unobserved, we use the framework of Keen and Slemrod (2017) to characterize conditions under which the welfare gains from raising revenue through improved tax administration exceed those from increased rates. Our results suggest that these conditions are likely to hold unless the additional compliance costs associated with the MTO are extremely high. Since the MTO actually appears to have made compliance for firms easier, not harder – firms report higher customer satisfaction when dealing with MTOs than when dealing with PTOs – the conditions seem likely to be

³We also investigate whether the ETI differs depending on whether firms have been moved to the MTOs or not. While our point estimates suggest that the ETI is lower for firms that are in the MTO than for those that are not, we cannot reject that the ETI under the two different enforcement regimes is the same.

satisfied.

In short, our results suggest that meaningfully large increases in tax revenue for medium-sized firms can be obtained through feasible administrative improvements in a relatively short period of time, and that the potential gains from these types of policies are large relative to tax rate changes. However, another worry is that the effects of improved tax administration may decline over time: if we think of improved tax administration simply as an increase in the firm’s true effective tax rate, we might expect the policy to increase tax revenue dramatically upon adoption (i.e., because an existing firm would now be taxed at a higher true effective rate), but to slow the rate of firm growth over time (i.e., because the firm would realize that new growth would be taxed at a higher rate, and would factor that into its future decisions, either for real investments or evasion strategies). However, our results actually point to the opposite – a large effect on tax revenue on impact that *grows*, not shrinks, over time: the effects of the MTO on taxes paid and on reported gross incomes 6 years after firms were transferred into the MTO were between 1.5 and 2.5 times larger than they were 2 years after being moved to the MTO, despite the fact that staffing levels and enforcement actions from the MTO (as well as from PTOs) remained essentially constant over time.

We conclude by suggesting one possible theoretical explanation for this phenomenon, and then offering empirical evidence to explore this mechanism in the data. In the standard (i.e., non-MTO) tax administration, with low staff-to-taxpayer ratios, overwhelmed tax staff prioritize their efforts, and they do so by focusing on the largest taxpayers. This implies that there is an additional “enforcement tax” on firm growth – firms want to avoid growing too large and drawing the attention of the tax authorities. By contrast, tax offices with more tax staff (i.e., MTOs) can pay attention to taxpayers more uniformly, with less regard for firm size. Thus, while the effective tax rate increases for smaller firms who are moved to the MTO – since they face higher enforcement overall – the better tax administration eliminates the additional enforcement tax on firm growth, and hence effective tax rates are equalized across firm size. We write down a simple stylized model that illustrates these ideas.⁴

To illustrate this mechanism, we additionally obtained detailed administrative data on the tax department’s actual enforcement actions – such as formal audits and letters sent to taxpayers regarding late VAT payments and underpayment. These actions are recorded identically at both MTOs and PTOs, so we can examine how they change for firms moved into the MTO. We find that in PTOs, these enforcement activities are strongly concentrated

⁴These ideas are related to Bigio and Zilberman (2011), who show in a more general setup that this type of size-dependent enforcement can be optimal, even if it leads to distortions.

among the very largest firms. In contrast, while smaller firms in the MTO face higher enforcement probabilities than similarly sized firms in the PTO, the empirical relationship between the probability of enforcement and firm size flattens once firms enter the MTO. This suggests, consistent with the stylized model, that improved tax administration for medium-size firms might in fact remove some firm growth disincentives, which may help explain why firms experience higher reported income growth after moving to the MTO. These findings also illustrate that differential tax enforcement on larger firms, which could be optimal for a tax authority facing limited resources and trying to maximize its tax intake in a static sense, may also contribute to the large number of very small firms in developing countries (Hsieh and Olken, 2014).

This paper builds on a number of literatures. First, we build on the growing new literature documenting the importance of tax administration in developing countries. Recent work has focused on improvements to third-party reporting (Pomeranz, 2015; Carrillo et al., 2017; Naritomi, 2018), computerization (Fan et al., 2018), and performance pay (Khan et al., 2016).⁵ The reform that we study allows us to understand the impacts of a change in the overall level of administration that firms face and to understand how this sustained increase in tax administration over many years affects firms after they are able to adjust to a new paradigm, using a detailed panel of administrative tax data.

Second, we build on the recent literature understanding the *de jure* impacts of corporate income taxes. While most recent work in the United States and Europe, such as Suárez Serrato and Zidar (2016) and Fuest et al. (2018), focuses on the impact of corporate income tax changes on investment and wages, our paper follows instead in the tradition of Gruber and Rauh (2007) and Kawano and Slemrod (2016) in estimating the elasticity of taxable income for corporate income tax. The few recent papers in this literature that use administrative tax data, notably Devereux et al. (2014) and Boonzaaier et al. (2018), use regression kink designs to estimate elasticities based on excess mass at kink points, which requires substantial assumptions restricting heterogeneity in preferences to generate identification of elasticities (Blomquist and Newey, 2017). Our paper, by contrast, uses the large and differential changes in marginal tax rates stemming from Indonesia’s corporate income tax reform, which generates substantial variation in marginal tax rates and which does not require these additional assumptions.

Finally, and perhaps most importantly, this paper bridges these two literatures to high-

⁵Other recent work focuses on what to tax, such as Best et al. (2015), who explore whether one should tax profits or revenue in low-information, developing country settings.

light the tradeoffs between tax administration and rate changes. Keen and Slemrod (2017), in particular, theoretically show that the key parameter of interest to study the impact of changes in both tax administration and rates is their impact on taxable income, and suggest the importance of studying both changes in the same context for comparison. In fact, they specifically point out that “the new wave of empirical literature on the impact of tax enforcement activities has not yet produced estimates of the elasticities our approach shows to be critical.” Part of the reason why this has not been done before is that doing so requires clear, credible natural experiments varying both tax rates and administration in the same setting, as well as access to high quality administrative tax data to evaluate the impacts of these changes. Indonesia’s reforms, coupled with its rich administrative data, provide a unique opportunity to bring empirical evidence into this broader theoretical debate, particularly in the developing country context.

In short, our findings suggest that developing country governments may have substantial room to raise revenue through both administrative improvements and raising rates – but that at least in the case of the medium-sized firms on which we focus, the dramatic returns from improved tax administration suggest it is likely to be a particularly important policy tool. Of course, these results do not imply that improvements in the fundamental parameters of the economy and tax system, such as use of the banking system and increased incentives for third-party reporting, could not also have large effects. Rather, our results suggest that feasible administrative improvements can have important effects even holding these other parameters constant.

The rest of this paper is organized as follows. Section 2 describes the setting, the two reforms that we study, and the data. Section 3 estimates the impact of improved tax administration, while Section 4 estimates the impact of changes in statutory tax rates. Section 5 presents our suggested explanation for our findings, focusing on how improved tax administration reduced differential enforcement on large firms. Section 6 concludes.

2 Setting and Data

2.1 Corporate Taxation Reforms in Indonesia

Indonesian taxation is administered by the Directorate General of Taxation (DGT), a department of the national Ministry of Finance. Corporate taxpayers are responsible for paying both corporate income tax and value-added taxes, as well as for filing withholding taxes on behalf of their employees.

As in most countries, corporate income taxes are levied on net income (profits), with standard depreciation schedules for capital assets. In the period that we study, the tax schedule moved from a progressive corporate income tax rate, with three tax brackets ranging from 10 to 30 percent, to a flat 25 percent rate, with discounts based on gross income (see Section 2.1.2). Value-added taxes are assessed at a flat 10 percent rate for most transactions, with rebates for exports. Taxpayers remit payments for both corporate income tax and individual income taxes monthly. Annual corporate tax returns, based on a January - December tax year for most taxpayers, must be filed by the end of April of the following year.

2.1.1 Tax Administration Reform and the Introduction of Medium Tax Offices

Indonesia began comprehensive reforms of its tax administration system in 2002, in response to a push for improved fiscal balance in the wake of the 1997-1998 Asian Financial Crisis. This was the first year it transitioned to a modern, centralized IT system to handle all tax transactions. It also restructured the organization of its tax offices.

The organizational reform had two main features. First, following typical practice worldwide (Lemgruber et al., 2015), large corporate taxpayers would be moved to centralized offices, with higher staff-to-taxpayer ratios to allow for more intensive followup. The top 200 largest taxpayers nationwide would be serviced centrally by a Large Taxpayer Office (LTO) in Jakarta; analogously, the top several hundred taxpayers in each region would be handled by a special Medium Taxpayer Office (MTO) in each of the country’s 19 tax regions. All remaining corporate taxpayers, as well as all individual taxpayers, would be handled by the network of approximately 300 Primary Taxpayer Offices (PTOs) spread throughout the country.⁶ We focus on firms serviced by MTOs and PTOs.⁷

Second, the office structure was also reformed. Prior to the reform, tax offices were organized by tax type, such that taxpayers filed different taxes in different locations, and auditing was conducted by a separate network of audit offices (Brondolo et al., 2008). The reorganization centralized all of each taxpayer’s payment obligations and auditing into a single office, and put a single contact person, known as an account representative, in charge of each taxpayer. This new centralized organizational structure was identical at LTOs, MTOs, and PTOs.

We study the impact on firms of being assigned to an MTO, as opposed to a PTO. The

⁶The only exception was the creation of 8 “special” tax offices for handling all foreign corporate taxpayers, publicly traded companies, and companies in the oil and gas industry.

⁷Since both LTO firms and firms in the special tax offices are large and easily identifiable, their data could not be shared in a way that would assure anonymity in accordance with Indonesian regulations.

primary difference between the MTOs and PTOs was that the MTOs had higher staff-to-taxpayer ratios; this analysis thus captures the effect of more intensive administration for larger taxpayers, holding the organizational structure of the tax office constant. Appendix Table A.1 shows the number and composition of staff in MTOs, as well as in PTOs in the same regions for comparison, using administrative human resources data from 2008 through 2011. We focus on the two main types of tax staff who deal with taxpayers: account representatives (ARs) and auditors. The data illustrate that MTOs feature a low taxpayer-to-staff ratio: approximately one AR and one auditor for each 17-26 corporate taxpayers. By contrast, at PTOs, each AR and auditor handled between 56 and 125 corporate taxpayers – in addition to hundreds or, in many cases, thousands of individual taxpayers, who are handled entirely by the PTOs.⁸ The MTO staff were also slightly more experienced; since pay is experience- and rank-based, the staff received slightly higher pay.

We focus primarily on the wave of MTOs created in 2007, which covered the vast majority (13 out of 19) of Indonesia’s tax regions. Prior to this, in 2004-2006, the new organizational structure was piloted in 6 regions, but the primary tax offices were not yet changed to have the same structure as MTOs (i.e., all taxpayer processes centralized into one office, modern IT system). Hence, in these pilot districts, the MTOs differed from PTOs on a number of different characteristics (see Appendix Table A.2 for a listing of these pilot districts). In 2007, two things occurred. First, MTOs were created in all remaining 13 regions. Second, the PTOs were reorganized in all regions, so that PTOs and MTOs would have the same responsibilities, IT, and structure, but now the key difference would be that MTOs would have high staff-to-taxpayer ratios.⁹ Therefore, we focus our analysis on the 13 regions where MTOs were created in 2007, in order to focus on the more intensive staff-to-taxpayer ratios that taxpayers were subject to, holding the overall administrative and organizational structure fixed between MTO and the PTO, though results are strikingly similar using the full set of MTOs (see Section 4.2.4).

Within each regional tax office, taxpayers were assigned to the MTO based on a formula involving pre-period taxpayer size. While neither the exact formula nor the Excel spreadsheets used to assign taxpayers were retained, interviews that we conducted with tax officials involved in the reform shed light on its inputs. The formula combined gross income and total taxes paid for the prior three tax years into a score, and the several hundred largest taxpayers

⁸We do not have microdata for individual taxpayers, so we cannot compute the precise number of individual taxpayers per AR.

⁹In practice, the PTOs in Java and Bali were converted first, with the rest of the country being phased in up to early 2008.

in each region were generally included in each MTO. As of December 2006, when the MTO assignment was conducted, the latest data available to DGT were for tax years 2003-2005, filed in April-May of 2004-2006. On average, about 4 percent of the taxpayers in each region – about 330 taxpayers – were assigned to each MTO when it opened.

2.1.2 The 2009 Corporate Income Tax Rate Reform

In September 2008, Indonesia passed a new law outlining a complete restructuring of the corporate income tax rate schedule beginning in tax year 2009.¹⁰ This entailed two main components: a) corporate tax rates would now be determined according to gross income (i.e., revenues) rather than taxable income (i.e., profits); b) the top marginal tax rate of 30 percent would be cut to 28 percent in 2009, and to 25 percent from 2010 onwards.

Prior to this reform, corporate income tax rates followed a 3-tiered schedule defined over taxable income (i.e., bottom-line profits): a rate of 10 percent for the first IDR 50 million (USD 5,000) in taxable income; a rate of 15 percent for the next IDR 50 million; and a rate of 30 percent on all taxable income over IDR 100 million (USD 10,000).

Starting in 2009, however, the system shifted to a flat rate, with discounts given based on gross income (i.e., top-line revenues). For firms with gross income above IDR 50 billion (USD 5 million), a 28 percent rate over all taxable income was applied. For firms with gross income below IDR 4.8 billion (USD 480,000), a 50 percent discount was applied, resulting in a 14 percent rate over all taxable income. For firms with gross income between IDR 4.8 billion and IDR 50 billion, a non-linear schedule was implemented, whereby a taxpayer with IDR g billion in gross income was assessed at a rate of 14 percent over the $(\frac{4.8}{g})$ share of its taxable income, and 28 percent over the remaining share, i.e., the tax rate was $14\frac{4.8}{g} + 28(1 - \frac{4.8}{g})$ percent. In 2010, the 28 percent flat rate was reduced to 25 percent, but the discounts were similar, so the final tax rate in this region became $12.5\frac{4.8}{g} + 25(1 - \frac{4.8}{g})$ percent, with a similar notch at IDR 50 billion in gross income. It is important to clarify that the tax is still levied based on a firm's taxable income; however, the tax rate charged depends on the firm's gross income.

Figure 1 illustrates the marginal tax rate under the original regime (Panel A) and the post-reform regime (Panel B). Note critically that the x -axis, which determines the marginal

¹⁰Nomor 36 Tahun 2008, available at https://www.bkpm.go.id/images/uploads/prosedur_investasi/file_upload/UU_36_2008.pdf. Individual income taxation was also reformed to decrease marginal income tax rates and increase non-taxable thresholds. Other than the change in statutory rates, the other features of the corporate income tax code (e.g. depreciation schedules and allowances) were unaffected by this reform.

tax rate, is different in the two regimes – it is based on taxable income (i.e., profits) in Panel A, and based on gross income (i.e., revenues) in Panel B. We exploit this change, which meant that taxpayers with different combinations of gross and taxable income faced different changes in their marginal tax rate, in the empirical analysis below.¹¹

2.2 Data

We obtained anonymized microdata covering all corporate taxpayers registered in the regional tax offices where an MTO was ever created, from 2003 through 2011. These data include detailed information on corporate income reporting (from corporate income tax forms), employment and wage bill (from employee income tax withholding forms), monthly payments data from the Treasury (separated for corporate income tax, VAT, and withholding), and administrative information of tax audits and VAT tax assessments, including the dates and types of all assessment-related letters sent to taxpayers. Further details are in Appendix A.

3 Theoretical Framework

We begin by outlining a simple theoretical framework that illustrates how the levers empirically assessed in this paper (tax administration and tax rates) might affect corporate taxpayers’ profit maximization. We use this framework to discuss the conditions under which each lever is preferable from a welfare standpoint, as well as to guide a counterfactual exercise in which we benchmark the effects of tax administration on tax revenues against a counterfactual tax rate increase. Section 3.1 begins with a simple framework of tax enforcement, largely following Keen and Slemrod (2017), which generalizes the arguments of Feldstein (1999), Chetty (2009), Saez et al. (2012) and others to allow for changes in tax enforcement in addition to tax rate. Here, we follow Keen and Slemrod (2017), adapting the problem to reflect the fact that we are dealing with corporate rather than individual taxation and simplifying the theory in a few respects for ease of explication. Bringing the framework closer to the tax administration reform that we study, section 3.2 then extends

¹¹The formula creates a notch at IDR 50 billion in gross revenue, where the tax rate on all taxable income jumps discontinuously from 26.65 percent to 28 percent. Another possibility would be to exploit the notch for identification. The data confirm that there is, indeed, bunching at the notch, with the density of taxpayers falling discontinuously by about 30 taxpayers in each IDR 1 billion bin to the right of the notch (see Appendix Figure A.7). However, since the notch is on gross income, not taxable income, this may understate the true elasticity, since many margins available to taxpayers to affect taxable income (i.e., deductions) may not be available for adjusting gross income.

the model to consider what happens when tax-enforcement is not uniform across firms.

3.1 Some simple welfare economics of tax administration and rates

Our goal is to derive an expression for the social welfare function that allows us to consider the tradeoffs between the changes in tax administration and changes in statutory tax rates. Consider a firm who solves:

$$\max_{l,e} (1 - \tau) (Af(l) - \gamma wl - e) - (1 - \gamma) wl - c(e, \alpha) + e \quad (1)$$

where $Af(l)$ are total firm sales (i.e. revenues), f is a concave production function, l is labor, w is the wage rate and τ is the tax rate. The firm can evade an amount e by paying a real evasion cost $c(e, \alpha)$, where α is a parameter that captures government enforcement.¹² We assume that higher enforcement raises the marginal cost of evasion, so that $\frac{d^2c}{ded\alpha} > 0$, and that evasion costs are convex, i.e. $\frac{d^2c}{de^2} > 0$.

The parameter γ captures the degree to which taxation is distortionary. When $\gamma = 1$, the tax is a pure profits tax, and hence does not distort the firm's labor demand. When $\gamma = 0$, the tax is a pure sales tax, which is distortionary. In this section, we assume $0 \leq \gamma < 1$, so that there are some distortions associated with taxation. This is a reduced form way of modeling distortions in corporate taxation that suffices for our purposes.¹³

Define taxable income as $z = Af(l) - \gamma wl - e$. Social welfare in this context is given by:

$$W = \underbrace{(1 - \tau)z - (1 - \gamma)wl - c(e, \alpha) + e}_{\text{firm post-tax profits}} + v(\tau z - a(\alpha)) \quad (2)$$

where $v \geq 1$ is the marginal value of government funds and $a(\alpha)$ are administration costs.

Taking the derivative of (2) with respect to τ and applying the envelope theorem, the

¹²Fines (which would be transfers, not real costs) are empirically very small in our context.

¹³An alternative setup would be to focus on the capital margin rather than the labor margin (i.e. to write $f(k)$ rather than $f(l)$), and then to explicitly write equation (1) as a function of the marginal effective corporate tax rate (see Fullerton et al., 1999) rather than the statutory rate. This alternative approach would be important if we were explicitly using changes in depreciation schedules and investment tax credits for identification (i.e. variation in effective rates holding the statutory rate constant), as in Gruber and Rauh (2007), rather than changes in the statutory tax rate, as we do here. In our context, where there are no investment tax credits and where relatively straightforward depreciation schedules are designed to approximate economic depreciation rate of assets, the marginal effective corporate tax rate will approximate the statutory tax rate, and so the firm problem will be similar to equation (1). We use the approach in equation (1) as it highlights the roles of statutory tax rates, and allows us to easily incorporate size-dependent tax enforcement in Section 3.2 below.

impact of a change in tax rates on welfare is given by:

$$W_\tau = -z + v \left(z + \tau \frac{dz}{d\tau} \right) = -z + v \left(z + z\varepsilon_{1-\tau} \frac{\tau}{1-\tau} \right) \quad (3)$$

where $\varepsilon_{1-\tau}$ is the elasticity of taxable income with respect to the net of tax rate. The fact that taxation is distortionary (i.e., $\gamma < 1$) is why $\varepsilon < 0$.

We can also do an equivalent exercise for a change in tax enforcement. Taking the derivative of (2) with respect to tax enforcement α :

$$W_\alpha = -\frac{dc}{d\alpha} + v\tau \frac{dz}{d\alpha} - v \frac{da}{d\alpha} \quad (4)$$

Note that we do not observe the change in private compliance costs $-\frac{dc}{d\alpha}$. We can, however, estimate the change in net government revenue with respect to improved tax administration (i.e. $\tau \frac{dz}{d\alpha} - \frac{da}{d\alpha}$); we do so in Section 4. This will allow us to bound how large $-\frac{dc}{d\alpha}$ would have to be for the change in administration to be welfare-improving.

This simple framework also allows us to ask whether, if the government is seeking to raise an additional dollar of revenue, it is better to do so through improvements in tax administration or increases in tax rates. In particular, we can calculate the tax change such that government revenue is the same after a marginal change in tax administration (i.e. a change in α). Given that net government revenues $R = \tau z - a(\alpha)$, we can write:

$$\frac{dR}{d\tau} = \tau \frac{dz}{d\tau} + z = z \left(1 - \frac{\tau}{1-\tau} \varepsilon_{1-\tau} \right) \quad (5)$$

$$\frac{dR}{d\alpha} = \tau \frac{dz}{d\alpha} - \frac{da}{d\alpha} \quad (6)$$

This implies that:

$$\frac{d\tau}{d\alpha} \Big|_R = -\frac{\tau \frac{dz}{d\alpha} - \frac{da}{d\alpha}}{z \left(1 - \frac{\tau}{1-\tau} \varepsilon_{1-\tau} \right)} \quad (7)$$

This suggests that, armed with the elasticity of taxable income, we can ask how large a change in tax rates one would need to get the equivalent revenue change from improved tax administration, and vice versa. After estimating the elasticity of taxable income with respect to the net of tax rate in Section 5.2.2, we compute this ratio (i.e., $\frac{d\tau}{d\alpha} \Big|_R$) in Section 5.3.1.

Finally, we can use this framework to ask a related welfare question: if the government seeks to raise more revenue, should it do so via improved tax administration or improved tax rates? Since we are considering marginal changes, this is equivalent to asking whether a

revenue-neutral increase in administration and corresponding cut in rates would be welfare improving or welfare decreasing; that is, by evaluating:

$$dW = W_\tau \frac{d\tau}{d\alpha}|_R + W_\alpha \quad (8)$$

Substituting W_τ , W_α and $\frac{d\tau}{d\alpha}|_R$ from equations (3), (4), and (7) above, this is equal to:

$$dW = \left(\tau \frac{dz}{d\alpha} - \frac{da}{d\alpha} \right) \frac{1}{1 - \frac{\tau}{1-\tau} \varepsilon_{1-\tau}} - \frac{dc}{d\alpha} \quad (9)$$

By estimating the change in tax revenue with respect to administration and the change in tax revenue with respect to tax rates, we observe all of the parameters in equation (9) except the change in private compliance costs $\frac{dc}{d\alpha}$. Nevertheless, equation (9) is useful in several respects. First, holding $\frac{dc}{d\alpha}$ fixed, improving tax administration is likely to be a good idea when both $(\tau \frac{dz}{d\alpha} - \frac{da}{d\alpha})$ is large – i.e., gains from improved tax administration are large – and when $\varepsilon_{1-\tau}$ is large – i.e., the behavioral elasticity with respect to tax rates is large. Both will turn out to be true in our empirical context. Second, and more precisely, we can use equation (9) to bound how large $\frac{dc}{d\alpha}$ has to be for a change in tax administration to be welfare-improving relative to an equivalent change in tax rates (see Section 5.3.2).

3.2 Size-dependent tax-enforcement

In the framework above, enforcement costs – proxied by $c(e, \alpha)$ – are the same for all firms. But, in practice, enforcement often targets particular types of taxpayers. In this section, we extend the model to consider what happens when enforcement is non-uniform.

As a benchmark, return to the firm problem in equation (1). Note that in the first-best, the firm will demand an amount of labor l such that $Af'(l) = w$. This will be the case either if taxes are non-distortionary ($\gamma = 1$, so a pure profits tax), or (trivially) if the marginal tax rate $\tau = 0$. Otherwise, the firm's level of production will be given by:

$$Af'(l) = \gamma w + \frac{(1-\gamma)w}{1-\tau} \quad (10)$$

As long as $\gamma < 1$, we observe the usual result that higher tax rates reduce firm size.

One perhaps surprising feature of this simple setup with uniform enforcement is that – even with distortionary taxation – the enforcement parameter α does not enter equation (10), and hence enforcement levels do not affect firms' production decisions, i.e. their choice

of l . As noted by Keen and Slemrod (2017), this happens because, in the setup in equation (1), the production decision l and the evasion decision e are additively separable.¹⁴

In practice, however, government audit agencies may observe firm production to inform their enforcement practices. For example, a tax agency might be more likely to observe the physical presence of a large factory, or with some probability each worker at a firm might reveal information about evasion to the government (as in Kleven et al. 2016).

We can modify the model to accommodate size-dependent enforcement by writing the cost of evasion as $c(e, \alpha(l))$; that is, government enforcement is no longer a scalar parameter α , but rather a function of firm size, $\alpha(l)$. In this case, the firm’s first-order condition contains an additional term, i.e.:

$$Af'(l) = \gamma w + \frac{(1 - \gamma)w}{1 - \tau} + \frac{1}{1 - \tau} \frac{dc}{d\alpha} \alpha'(l) \quad (11)$$

What equation (11) makes clear is that what matters is not just the *level* of enforcement, but also the *slope* of government enforcement – i.e., $\alpha'(l)$. In particular, the presence of size-dependent enforcement can create a distortionary “enforcement tax” on firms – firms avoid becoming too big in order to avoid being detected by the government. This is true even with non-distortionary taxation (i.e. a pure profits tax, where $\gamma = 1$). Equation (11) also shows that this size dependent distortion will be magnified as the statutory tax rate increases.

Equation (11) suggests that different types of improved tax enforcement may have different effects. A reform that increases the level of α while flattening the slope of α – i.e., that has a higher level of enforcement, but one that is more uniform across firms – may have both a direct effect on government revenue (through reducing evasion), and additional indirect effect on government revenue (by reducing distortions and encouraging firm growth). By contrast, a reform that increases α only for larger firms – i.e., that increases the scrutiny on very large firms but leaves smaller firms unchecked – may have ambiguous effects, as it decreases evasion, but also decreases taxable income by reducing firm size. This suggests that when we examine the effects of improved tax administration, it will be important to understand not just whether it increases effective enforcement on firms, but also the degree to which to which it steepens or flattens the $\alpha(l)$ function.

The point of this simple setup is not to say that size-dependent enforcement can never be

¹⁴If we added a constraint that taxable income $z \geq 0$, so that evasion e cannot exceed taxable profits $Af(l) - \gamma w l$, then enforcement could affect production for those firms at the corner solution and paying no taxes.

optimal; indeed, in more general models, such size-dependent enforcement may be optimal, even accounting for the additional distortions on firm size that it creates (see, e.g., Bigio and Zilberman, 2011). Rather, the key point here is to emphasize that to empirically estimate the impact of an improved tax administration intervention, one needs to consider both the level and the slope of the $\alpha(l)$ function. We explore these issues empirically in Section 6.

4 The Impact of Improved Tax Administration

4.1 Empirical Strategy

We begin by estimating the impact of being assigned to more intensive tax administration in the MTOs. As described in Section 2.1.1, taxpayers were assigned to MTOs in 2007 based on an increasing function of pre-assignment gross income and total taxes paid (see Appendix Figure A.1).¹⁵ Thus, a key empirical challenge is that assigned taxpayers were inherently different from other taxpayers: they were larger, paid more taxes, and might have had better growth prospects. Therefore, we cannot simply compare the two types of taxpayers.

Instead, we compute taxpayer-level balancing weights that match taxpayers assigned to the MTO with other unassigned taxpayers based on their 2005 gross income, total taxes paid, and region. This step brings the pre-assignment outcome levels of the two groups close together via weighting. We then exploit the panel structure of the data to estimate the effect of MTO assignment using a taxpayer-level weighted difference-in-differences design (WDD), with firm fixed effects.

To compute balancing weights, we follow the “entropy-balancing” methodology proposed by Hainmueller (2012). This method computes exact weights (for the untreated group) such that a set of desired pre-treatment characteristics of the untreated group match those of the treated group, and chooses the set of weights that achieves balance that minimally deviates from uniform weights. This methodology is particularly appropriate in a situation where the true functional form of the propensity score is unknown, and in this case, this approach provides better pre-treatment balance than standard inverse propensity-score methods (Hainmueller (2012); see also the related discussion in Athey and Imbens (2017) and Athey et al. (2018)).¹⁶

¹⁵We do not know the precise assignment formula, so we cannot use a regression discontinuity design. While the probability of MTO assignment is strongly increasing in these two variables, we also do not observe a sharp discontinuity. See Appendix Figure A.1.

¹⁶We replicate all main findings using inverse probability weights as described in Abadie and Cattaneo (2018). Results are qualitatively similar and, if anything, generally slightly larger using the IP weights (see

As is standard in the matching literature, we impose a common support restriction on the variables used to match. These distributions are shown in Appendix Figure A.2. In our main specification, we drop firms that fall within the top or bottom 2.5 percent of either the control or treatment distribution of the key matching variables; this implies that we exclude very large firms within the MTO and very small firms not in the MTO. Appendix Table A.9 shows robustness to more or less restrictive common support restrictions.

Since the latest corporate income tax filings available to DGT at the time of the MTO assignment (December 2006) were for tax year 2005, we compute balancing weights by matching on 2005 gross income and total taxes paid.¹⁷ Note two important aspects in computing the weights. First, we define treated firms as those who were selected in the initial assignment in 2007. Second, in constructing the variables used for matching, we use corporate income tax filing dates and tax payment dates to discard any data that was neither filed nor paid by December 2006. Columns (1) and (2) of Table 1, as well as Columns (1) and (2) of Appendix Tables A.10 and A.6, show that the resulting weights produce weighted samples that are broadly balanced not only on the targeted variables (2005 gross income and total taxes paid), but on a wide variety of other variables as well.

Once the balancing weights are computed, we estimate the effect of MTO assignment using weighted differences-in-differences. We define a variable M_{iFC} as being in the first cohort of MTO assignment.¹⁸ We then estimate the reduced form effect of MTO assignment in 2007 using the following specification, where each taxpayer is weighted by its respective balancing weight:

$$Y_{it} = \alpha + \beta^{RF} (M_{iFC} \times 1_{t>2005}) + \delta_t + \delta_i + \epsilon_{it} \quad (12)$$

where Y_{it} is the outcome of interest of taxpayer in year t , δ_i is a taxpayer fixed effect, and δ_t is a year fixed effect. Because corporate income taxes for year 2006 are only filed in April-May 2007, four to five months after taxpayers began being serviced by the MTO, we consider

Appendix Table A.8).

¹⁷While we believe that data for three baseline tax years (e.g. 2003-2005) were considered to assign taxpayers to MTO, neither the formula used nor the procedure for handling missing data (e.g., data not yet filed as of December 2006) are available. Matching on the 2005 level, rather than using all three years, allows us to check whether both sets of matched taxpayers are on similar pre-treatment trends. Using all three years (2003-2005) instead of just 2005 for the matching produces similar estimates (Appendix Table A.8).

¹⁸During the first year of the MTO, firms' taxpayer ID codes were gradually converted to reflect the MTO status. We therefore define M_{iFC} as 1 if the firm's corporate income taxes were filed with an MTO code in 2007 or 2008, i.e., prior to the next wave of MTO expansions in 2009. The first tax year affected for this cohort was 2006, for which final tax returns were filed during calendar year 2007.

2005 as the last pre-treatment year, so any taxes for tax years 2006 or later could have been affected by the MTO. We estimate equation (12) in a sample of taxpayers from the 13 regions whose MTOs were created in 2007, using data from tax years 2003-2011.¹⁹ Standard errors are clustered by taxpayer.²⁰ We also estimate an event study version of equation (12) where we estimate separate β^{RF} coefficients by year, which allows us to assess whether these firms were on similar trends in the pre-period, and to assess changes in the MTO’s impact over time.

To account for the fact that some firms in the control group were moved to the MTO starting in 2009, we also estimate an instrumental-variables version of equation (12), i.e.,

$$Y_{it} = \alpha + \beta^{IV} M_{it} + \delta_t + \delta_i + \epsilon_{it} \quad (13)$$

where we instrument for M_{it} , the actual MTO status of firm i at time t , using $(M_{iFC} \times 1_{t>2005})$. This is just a re-scaling of equation (12), but may provide a more accurate magnitude for the treatment effect of treated firms on MTO. The first-stage of this equation is quite strong, with an F-statistic over 6,000 – see Appendix Table A.4.

4.2 Results

4.2.1 Impacts on tax collection

As discussed in Section 3, the key parameter needed to estimate the impact of a reform in tax administration is the effect on government revenue. Figure 2 therefore begins by showing the impact of the MTO on total tax payments year-by-year. The left-hand side variable is taxes paid in 2007 billions of Rupiah (IDR 1 billion = USD 100,000), where we use the Indonesian CPI to deflate all nominal values to their 2007 equivalents.²¹

¹⁹We end our analysis in 2011 as there were substantial expansions in the number of firms assigned to the LTO in 2012, as well as changes in which firms were in MTOs. Since DGT did not share any data from the LTO firms, firm attrition would be a problem starting in 2012.

²⁰Appendix Table A.7 presents robustness to clustering standard errors at the taxpayer’s origin tax office level and at the region level. Results are very similar.

²¹Note two facts: a) the outcome variable is in levels (billions of Rupiah), not logs, and b) the weights from the entropy weighting match the weights in the treatment group mean. Combined, these two facts imply that our results capture the average effect of the MTO on treated firms within the common support sample. To the extent there is treatment effect heterogeneity among firms in terms of percent increases, we will nevertheless capture the true “average effect” on revenue that the government captures. However, these estimates may underestimate the total extent of revenue increases: if the larger firms that we exclude due to our common support restriction had similar percent increases as the firms in our sample, they will have larger impacts in levels than we estimate here. This will not, however, affect the comparison to tax rate changes in Section 5 below, since the samples for both are identical.

Panel A presents the time series for each of the two groups of taxpayers (those assigned to the MTO 2007 group, and those not assigned to the MTO in 2007), where firms are weighted using the balancing weights estimated above. Panel B shows the full estimates using equation (12). In both panels, the year variable is the tax year, and includes payments for that tax year made up to six months following the end of the tax year.²² Recall that the MTOs were established by a January 2007 decree and began to take effect within a few months thereafter, before the filing date for 2006 tax year tax returns. We therefore consider 2005 as the final pre-period year, 2006 as a year that was partially affected, and 2007 as the first full MTO year.

Examining the pre-period – 2003-2005 – shows that the two sets of firms have very similar pre-trends. The two groups of firms match almost exactly in Panel A; the regression version in Panel B shows that the pre-period is flat, indicating no differential pre-trends. This is not mechanical, as we only matched on the 2005 data, rather than on the full 2003-2005 period; that is, we matched on the level in 2005, but did not match on the trends.

The MTO had a large impact. There is a large initial effect of the MTO: tax payments increased in 2006 (the first year that could be somewhat affected by the MTO), and tax payments increased by IDR 312 per firm by 2007, the first year the MTO was fully in effect. The effect in 2007 represents an increase of 64 percent (over the treated group’s counterfactual mean in 2007) for affected firms. The impact continues to grow over time: by 2011, the impact of the MTO increased further, to IDR 605 million (an increase of 129 percent over control firms in the same year). The difference between the effect in 2007 and 2011 is statistically significant (p -value of 0.055).

Panel A of Table 1 shows the results in regression form, based on estimating equation (12) and (13). For each variable, Columns (1) and (2) show the weighted pre-treatment (i.e. 2005) means for the treatment and control group, showing that taxpayers appear balanced not just on the variables we explicitly match on (total tax payments and gross income), but also on various sub-components of taxable income as well.

We show the reduced form and IV estimates, respectively, in Columns (4) and (5). On

²²Taxpayers typically pay VAT and estimated corporate income taxes monthly, and then are required to file a corporate income tax return by April of the following year. We include all tax payments for a given tax year made during that tax year, and in the the six months thereafter; that is, 2007 tax payments include all payments made for tax year 2007 and remitted on or before June 30, 2008. We impose this time limit because it is possible that the MTO encouraged back-payment of previous years’ taxes, i.e. payments towards tax year 2005 made in 2008. Alternatively, Appendix Figure A.5 shows results for this “dollars in the door” measure of tax revenue receipts, where the time variable is the calendar date of payment, regardless of tax year, with no time limit; results are nearly identical.

average, total tax payments increased by IDR 525 million (USD 52,500).²³ About two-thirds of the increase comes from higher VAT collections; and the remaining third comes from higher corporate income tax and other income tax (e.g., withholding) payments.²⁴

To benchmark the magnitude of these effects, we compute the counterfactual control complier means by subtracting the estimated treatment effect from the post-period levels in the control group (Katz et al., 2001), shown in Column (3) for each variable. We then express the estimated impact of the MTOs as a share of both the control complier mean (Column 6) and as a share of the total amount of each type of revenue collected for all sample firms using our IV treatment estimates (Column 7).

The estimated impacts are substantial. We estimate that the MTO increased annual tax revenues for affected firms by 128 percent. The increases are seen on all types of taxes: 137 percent for VAT, 87 percent for corporate income tax, and 100 percent for other income taxes. We also estimate that the MTOs, which covered only 4 percent of firms in affected regions, increased total tax collections from corporate taxpayers by 5.7 percent.

To estimate the total effect of the MTOs, we need to extrapolate to the full set of firms served by the MTO, not just those in the common support set used for estimation. Since the firms excluded from the analysis set are, for the most part, larger than the firms in the estimation sample (as shown in Appendix Figure A.2), different approaches to extrapolation could yield different results. A reasonable lower bound is to assume that all firms experience the same gains, in rupiah terms, as the treatment firms; this is likely a lower bound since the excluded firms are substantially larger. By contrast, a reasonable upper bound is to assume that all firms experience the same percent increase in tax revenues shown in Table 1. These are, of course, not formal bounds, as we only know the LATE on the estimation set, but they seem reasonable as a guideline for what to expect. Using this approach, we estimate that the MTO increased total tax revenues by at least USD 4.0 billion over the 6 years since it was started.

While Table 1 presents the effects on gross government revenue, as discussed in Section 3, the relevant parameter for welfare is the effect on *net* government revenue; that is, the effect on tax revenue after subtracting off the additional costs of enforcement. The additional enforcement costs associated with the MTO, however, are small. We obtained budget data,

²³We focus on the IV estimates in the text. The IV estimates adjust for imperfect compliance with the original 2007 MTO list; in particular, some firms were moved to the MTO starting in 2009. A first stage regression of M_{it} on M_{2007} on our weighted sample (where weights are, as always, determined using 2005 values) yields a first stage coefficient of 0.65 (standard error 0.008). The first-stage F-statistic is 6,412, so weak instruments are not a problem in this context.

²⁴Appendix Table A.10 further disaggregates these tax payments.

as well as the number of corporate taxpayers, for all MTOs and PTOs in Indonesia from 2015 (the earliest available year). We convert the costs to 2007 rupiah using the Indonesian CPI for consistency. Since PTOs handle both corporate and individual taxpayers, we assume that half of the PTO costs are associated with corporations. (This assumption is inconsequential; results are similar even if we assign all PTO costs to corporate taxation.) As shown in Appendix Table A.5, the difference in government enforcement expenditures, per taxpayer, between MTO and PTO is about IDR 3 million (US \$300) per year. These enforcement costs are thus *two orders of magnitude* smaller than the estimated revenue gains shown in Table 1. That is, given an effect on gross taxes paid of IDR 525 million per taxpayer per year, the effect on net government revenues is IDR 522 million per taxpayer per year.

4.2.2 Increases in reported income vs. increases in collections?

Better tax administration could increase tax revenues in one of two ways: by changing the amount of tax due (i.e., what taxpayers report on their tax forms), or by increasing tax collections (i.e. the share of tax due collected). To investigate this, we focus on corporate income tax, for which we observe both reports on each taxpayer’s annual tax returns, in addition to actual tax payments from the tax authority’s treasury system. To the extent that we observe changes on the various items on tax returns, we also can shed light on how taxpayers respond to improved tax administration, and the extent to which they can offset newly reported revenues with newly reported costs (Carrillo et al., 2017).

The results are shown in Panel B of Table 1, and graphically in Figure 3. We present results on several key line items – gross incomes, taxable incomes, corporate income tax due, and the profit margin in Table 1; Appendix Table A.6 shows the impact on all major line items of the corporate income tax return in detail, allowing us to decompose how changes in these various line items add up, on net, to a change in taxable incomes.

Several results are worth noting. First, the estimated impact of the MTO on reported corporate income tax due – IDR 0.065 billion – is very similar to the actual increase in corporate income tax payments shown in Panel A – IDR 0.051 billion. This implies that most of the increase in observed corporate income tax payments comes from an increase in reported corporate income due, rather than an increase in collections. In Panel C of Table 1, we explicitly report results where the dependent variable is the recovery rate (corporate income tax paid divided by corporate income tax due), and find no impact of the MTO.

Second, the increase in corporate tax due comes from an increase in gross revenues reported. In particular, gross income (i.e. revenues) increase by IDR 9.1 billion (US \$910,000),

or about 76 percent. This implies that firms report substantially more sales once they move to the MTO. Costs of sales (defined as operating expenses, including both material and labor inputs) also increase by IDR 7.6 billion, or about 82 percent, suggesting that this reflects new business being reported to the government. As shown in Appendix Table A.6, other expenses increase as well, at a slightly slower rate, so that on net total reported expenses (costs of sales + other expenses) increase by 77 percent. Since both revenues and total costs increase at almost exactly the same rate, reported profit margins (i.e., net income divided by gross income), shown in Table 1, remain unchanged. This suggests that the main mechanism through which improved tax administration led to increased revenue is through capturing more top-line business activity on the tax books, rather than more scrutiny on deductions or increases in collection rates.

Third, the pattern of growth in Figure 3 shows that the MTO firms continue to report growth – in both gross income and taxable income – at substantially higher rates than comparable firms that were not assigned to the MTO. Three years after the introduction of the MTO, these firms had 41 percent higher gross income than comparable firms; this had increased to 120 percent higher six years after the introduction of the MTO. This difference is statistically meaningful (p -value 0.007). This implies that the dramatic increases in reported tax revenue from MTO firms over time come not from increased effectiveness of the MTO at collecting taxes due, or from increased scrutiny of deductions, but rather that MTO firms reported substantially higher revenues to the government over time.

4.2.3 Changes in Reported Employment

In addition to tax payments and reports, we also observe each firm’s number of reported employees, which comes from the firms’ employee income tax withholding reports. Firms are required to report not just their total wage bill, but also the number of temporary and permanent workers that they employed during the year.

In Table 2, we examine the effect of the MTO on reported firm employment.²⁵ We find that the number of permanent employees increases by about 21 percent – an increase of 10 permanent employees per firm (p -value 0.085). The point estimates suggest that the total number of employees increased by the same amount, but the standard errors increase once we include temporary employees, who (by their nature) have much higher variance.

The wage bill for both permanent and temporary employees increases at a similar rate – about 21 percent for permanent employees, and about 24 percent overall. Average yearly

²⁵Year-by-year figures for employment are shown in Appendix Figure A.3.

wages (computed as wage bill divided by number of employees) increase by about 17 percent for permanent employees, with no meaningful change for temporary employees. This implies that the increases in taxes paid are not coming at the expense of worker wages.

4.2.4 Robustness

We consider a variety of robustness checks along three dimensions: clustering levels, the weighing approach used, and sample restrictions. First, Appendix Table A.7 shows that the main results are robust to the level at which standard errors are clustered. Column (1) reproduces the main results from Tables 1 and 2, which are clustered at the taxpayer level. Columns (2) and (3) show how standard errors change when clustering at the taxpayer's origin tax office level and at the region level, respectively. Results are very similar throughout. Intuitively, this is because our variation is at the firm level, within region rather than across regions.

Second, Appendix Table A.8 shows that the results are robust to different weighting approaches. Column (1) reproduces the main results from Tables 1 and 2, using the Hainmueller (2012) entropy-balancing weights, estimated on 2005 data for ease of comparison. Column (2) shows the results with no weights and no common support restriction, which are generally substantially larger than our main estimates, and remain statistically significant. Column (3) reports results using the same matching variables – 2005 gross income and total taxes paid – but instead estimates a propensity score for being in the MTO as a function of these variables and uses inverse-propensity score weights (IPW) (see Abadie and Cattaneo (2018)). These results produce estimates that are similar in statistical significance, but somewhat larger in magnitude. Columns (4) and (5) repeat both the entropy-balancing weighting procedure and the propensity-score weighting procedure, but using as inputs the data from 2003, 2004, and 2005 instead of just 2005. With these additional years of data, the entropy-balancing weighted weights remain virtually unchanged, and the inverse propensity score weighted results now appear much closer to our preferred specification in Column (1).

Third, Appendix Table A.9 shows that the sample restrictions do not substantively change our conclusions. Column (1) again repeats our main results. As described in the data appendix, our main analysis sample excludes microenterprises with less than IDR 100 million in gross income (US \$10,000) at baseline; Column (2) shows that including these firms does not qualitatively change the results, though magnitudes are slightly smaller as the distribution has shifted to the left. Column (3) shows that relaxing our common support restriction further, so that we trim only firms not in the top or bottom 1 percentile of the

distributions of the matching variables, again produces qualitatively similar results (with similar patterns of statistical significance), but magnitudes that are between half to two-thirds as large as the main results.

Finally, we consider results that include all MTOs, not just the MTOs created in 2007.²⁶ As discussed in Section 2.1.1 above, we focus on regions where the MTOs started in 2007 in the main specifications, since the PTOs were also reorganized to follow the same administrative structure (albeit with fewer staff per taxpayer) at the same time. We re-estimate equation (13), but instead of using $(M_{iFC} \times 1_{t>2005})$ as an instrument, we allow for the fact that MTOs in different regions started in different years. Specifically, for each region r , we define a variable M_{ir} which is a dummy for whether firm i was in the MTO in region r in the first year it was fully operational. For each region r , we define \tilde{t}_r to be the last year unaffected by the MTO. For example, for the MTOs which opened in 2007, which could have affected 2006 tax returns, we define \tilde{t}_r , the last unaffected year as 2005. We use data as of year \tilde{t}_r to do the matching in each region, and we construct our instrument for MTO presence in year t as $(M_{ir} \times 1_{t>\tilde{t}_r})$. This notation simply generalizes our estimating equations from Section (4.1) to allow for the fact that MTOs started at different times in different regions. The results are presented in Column (4) of Table A.9; year-by-year reduced form graphs for total taxes paid and firm reported gross income are also shown in Appendix Figure A.4. The results are qualitatively very similar to the main results, showing quantitatively large and statistically significant increases in tax payments, reported gross incomes, and permanent employees.

4.2.5 Summing up

The transition to improved tax administration – characterized by higher staff to taxpayer ratios – led to substantially higher tax revenues. This came in the form of higher top-line revenues being reported by firms, rather than decreased deductions or changes in the degree to which taxes due were collected. The increases in tax revenues for the government were more than two orders of magnitude larger than the increases in administrative costs associated with the increased enforcement. Surprisingly, the increased tax enforcement did not slow the rate of firm growth; if anything, the results suggest substantially higher revenue growth in the period after being switched to the MTO than that experienced by similar firms that did not move. We return to the question of why this may have occurred in Section 6

²⁶The only MTO we cannot include in this analysis is the Central Jakarta MTO. It was created in 2004 (potentially affecting 2003 tax year data); we therefore do not have any pre-period data for matching.

below.

5 Comparison to Changes in Statutory Tax Rates

5.1 Empirical Strategy

We next examine the impact of the changes in Indonesia’s corporate statutory tax rates in 2009 and 2010. We begin by using the differential tax change described in Section 2.1.2 to estimate the elasticity of taxable income (ETI) with respect to the net of tax rate. We then use this estimate to benchmark the impact of improved tax administration against more conventional changes in the statutory tax rate.

To estimate the ETI using the tax schedule change, we follow the approach in Gruber and Saez (2002), Saez et al. (2012), and others. Specifically, since the marginal tax rate is a function of potentially endogenous variables (gross income, taxable income), we instrument for the change in a firm’s marginal tax rate by taking the firm’s characteristics (gross income, taxable income) from the tax year before the schedule change, and apply the new statutory tax schedule to these pre-period values.

Our estimating equation follows the standard panel-level specification discussed in Saez et al. (2012), with the ETI estimated as the ε coefficient in:

$$\ln\left(\frac{z_{it+1}}{z_{it}}\right) = \alpha + \varepsilon \ln\left(\frac{1 - \tau_{it+1}}{1 - \tau_{it}}\right) + \ln z_{it} + \ln g_{it} + \delta_t + \delta_i + \nu_{it} \quad (14)$$

where z_{it} is taxpayer i ’s reported taxable income for tax year t , g_{it} is taxpayer i ’s reported gross income for tax year t , τ_{it} is taxpayer i ’s statutory marginal tax rate for tax year t , and ν_{it} is an error term. The estimates of the ETI are therefore with respect to the net of tax rate $1 - \tau$, that is, the share of reported taxable income that the taxpayer gets to keep. Note also that there were two tax changes (2009 and 2010), allowing the inclusion of taxpayer fixed effects (δ_i) in a regression specification that is already estimated in first-differences; we report robustness exercises below that drop taxpayer fixed effects and/or only use a single tax change.

We instrument for the change in tax rates, $\ln\left(\frac{1 - \tau_{it+1}}{1 - \tau_{it}}\right)$, by computing the statutory marginal tax rate τ_{it} for taxpayer i in year t according to the statutory marginal tax rate schedules before and after the reform, using taxpayer characteristics from the year prior to the reform. As described in Section 2.1.2 above, recall that the tax schedule switched from being based on taxable income to being based on gross income. Recalling that z denotes

taxable income and g denotes gross income, the pre-reform statutory marginal tax rate faced by taxpayer i in tax year t is given by:

$$\tau_{it} = \begin{cases} 10\% & \text{if } z_{it} < \text{IDR 50 million} \\ 15\% & \text{if IDR 50 million} \leq z_{it} < \text{IDR 100 million} \\ 30\% & \text{if } z_{it} \geq \text{IDR 100 million} \end{cases} \quad (15)$$

Starting with 2009, the statutory marginal tax rate faced by taxpayer i in tax year t is:²⁷

$$\tau_{it} = \begin{cases} \frac{r_t^*}{2} & \text{if } g_{it} < \text{IDR 4.8 billion} \\ \frac{r_t^*}{2} \left(\frac{4.8 \text{ billion}}{g_{it}} \right) + r_t^* \left[1 - \left(\frac{4.8 \text{ billion}}{g_{it}} \right) \right] & \text{if IDR 4.8 billion} \leq g_{it} < \text{IDR 50 billion} \\ r_t^* & \text{if } g_{it} \geq \text{IDR 50 billion} \end{cases} \quad (16)$$

where r_t^* was 28 percent for tax year 2009 and 25 percent for 2010 onwards. We denote by τ_{it+1}^C and τ_{it}^C the marginal tax rate calculated using year $t+1$ and year t formulas in equation (16) applied to pre-period (i.e. 2008) values of g_{i2008} and z_{i2008} .

The first stage regression, therefore, is given by:

$$\ln \left(\frac{1 - \tau_{it+1}}{1 - \tau_{it}} \right) = \alpha + \omega \ln \left(\frac{1 - \tau_{it+1}^C}{1 - \tau_{it}^C} \right) + \ln z_{it} + \ln g_{it} + \delta_t + \delta_i + \nu_{it} \quad (17)$$

We estimate the first- and second-stage equations using corporate income tax filings for tax years 2008 - 2010, such that the ETI estimates leverage reform-induced changes in marginal tax rates over the two key years of the rate reform: the move from a taxable income-based to a gross-income based schedule in 2009, and the marginal tax rate cuts in 2010.

Appendix Figure A.6 presents this reform-induced variation visually with a heatmap of the change in predicted marginal tax rates (specifically, $\tau_{it+1}^C - \tau_{it}^C$) as a function of taxpayers' 2008 gross and taxable income, and indicates with a scatterplot where taxpayers fall along this variation. Panel A shows that the 2008-2009 schedule change induced a rich pattern of

²⁷As shown in Figure 1, the 2009 reform introduced a non-linear schedule to determine the total taxes due T_{it} of taxpayers with gross income between IDR 4.8 billion and IDR 50 billion, whereby a taxpayer with g IDR billion in gross income paid $\frac{r^*}{2}$ over a $(4.8/g)$ share of its taxable income, and r^* over the remaining amount. That is:

$$T_{it} = \frac{r^*}{2} \left(\frac{4.8 \text{ billion}}{g_{it}} \right) z_{it} + r^* \left[1 - \left(\frac{4.8 \text{ billion}}{g_{it}} \right) \right] z_{it}$$

The marginal tax rate τ_{it}^{Post} for these taxpayers is therefore obtained by differentiating T_{it} with respect to z_{it} . We calculate the MTR for an additional dollar of taxable income z_{it} holding gross income g_{it} constant.

differential tax rate cuts (light green to blue areas) and differential tax rate increases (yellow to red areas), while the 2009-2010 schedule change induced differential but more tenuous tax rate cuts. Table A.11 presents alternative estimates of the ETI when only the 2008-2009 schedule change is used in estimation, among other specification robustness.

As the ETI estimates will also be used to benchmark the tax administration effects, we use the same sample and balancing weights as in the analysis of the MTO in Section 4. In addition to the overall impacts, we also estimate ETIs separately for MTO and PTO taxpayers in order to assess the extent of differential responsiveness to tax rate changes under the different tax administration regimes. The fact that we are using the entropy-balancing weights implies that the difference in ETIs between MTO and non-MTO firms can be interpreted as the effect of being in the MTO on the firm ETI, holding characteristics of the firm constant.

5.2 Results

5.2.1 First-stage

Table 3 presents the results. Panel A begins by showing the first stage from estimating equation (17), i.e. predicting the change in actual marginal tax rate for taxpayer i between year t and $t + 1$ using the change in tax schedule, applied to pre-reform data (i.e. 2008). Column (1) shows the results for all taxpayers. The first stage is quite strong –the coefficient of the actual marginal tax change on the predicted marginal tax change is 0.980, and the first-stage F-statistic is over 3,000. Columns (2) and (3) show that the first-stage is virtually identical for both MTO and non-MTO firms.

5.2.2 The elasticity of taxable income

The second-stage ETI estimates, from estimating equation (14), are shown in Panel B. Overall, for all firms, we estimate an elasticity of taxable income with respect to the net-of-tax rate of 0.59. This estimate is substantially larger than the estimate from Gruber and Rauh (2007) using Compustat data in the United States (0.2), but very close to the net of tax rate estimate from Dwenger and Steiner (2012) using a pseudo-panel of German corporate taxpayers average tax rates (0.6).²⁸

²⁸The tax rate, and variation used, is somewhat different in these studies. Both Gruber and Rauh (2007) and Dwenger and Steiner (2012) estimate the elasticity with respect to the average effective tax rate, generating variation by changes in depreciation schedules and other treatments of capital expenditure, holding the statutory rate fixed. By contrast, our setting is unusual in that we have direct policy variation in

Applying standard formulas, we can calculate the marginal excess burden of raising the top corporate income tax rate using this elasticity. We slightly modify the notation in Section 3 to account for the fact that we have a progressive tax schedule, and so need to consider changes to the top marginal rate. Using the notation from Saez et al. (see 2012), we note that a change in marginal tax rates has two components, a mechanical effect (dM) and a behavioral effect (dB). Under the assumption of a constant ETI ε and that all taxpayers above \bar{z} face a single marginal tax rate, the mechanical effect of a tax change $d\tau$ is given by:

$$dM \equiv N \cdot (z^m - \bar{z}) d\tau > 0$$

while the behavioral effect is

$$dB \equiv -N \cdot \varepsilon \cdot z^m \left(\frac{\tau}{1 - \tau} \right) d\tau < 0$$

where z^m is the average taxable income among those taxpayers, and τ is the top marginal tax rate. In other words, dM is the total revenue that would be raised for a percentage point change $d\tau$ to the top marginal tax rate τ absent any behavioral responses, whereas dB captures the behavioral reduction in total taxable income reported for that same change. The change in revenue is the difference between the mechanical effect and the behavioral effect, i.e. $dR = dM + dB$.

Combining these terms yields the expression for the marginal excess burden of taxation:

$$-\frac{dB}{dR} = \frac{\varepsilon\tau\rho}{1 - \tau - \varepsilon\tau\rho} \quad (18)$$

where $\rho = \left(\frac{z^m}{z^m - \bar{z}} \right)$ is the Pareto parameter (which we calculate as 1.33 in our data).²⁹ This captures the additional loss to the taxpayer above and beyond the taxes paid, for each additional dollar of revenue raised.

Our estimates imply that the marginal excess burden per dollar raised is 0.51; that is, each dollar of taxes raised causes an additional burden of 0.51 on taxpayers. Assuming a constant elasticity, we also obtain the revenue-maximizing tax rate, given by $\tau^* = \frac{1}{1 + \rho\varepsilon}$.

statutory marginal rates that differs across firms. We, therefore, estimate the elasticity directly with respect to the statutory marginal rate.

²⁹In Indonesia's pre-2009 system, with a progressive marginal tax system, this formula applies exactly, and one can calculate $a = \frac{z^m}{z^m - \bar{z}}$, where \bar{z} is the taxable income threshold over which the top rate applies, and z^m is the average taxable income conditional on it being above \bar{z} . Our estimates here thus apply to the pre-2009 system. In the 2009 and after system, this estimate is only approximate since a change in the marginal tax rate applies to everyone, but with discounts depending on gross income.

This implies that the revenue-maximizing top rate is 56 percent in this context, substantially higher than the top 30 percent marginal tax rate observed throughout the period we study. We can reject that Indonesia is above the revenue-maximizing rate (p-value < 0.01).

Finally, we present several sensitivity checks, shown in Appendix Table A.11. In particular, we present: a) unweighted estimates; b) estimates where τ_{it+1}^C and τ_{it}^C (i.e. the predicted tax rates) are predicted using the 2003-2008 growth trend in g_{it} and z_{it} , rather than the 2008 level; c) estimates without taxpayer fixed effects; and d) estimates using only the 2008-2009 change in reported income and tax rates. In the specifications in Columns (c) and (d), where we exclude taxpayer fixed effects, we include sector fixed effects instead, since the tax change may differ systematically by sector. We also include a dummy for the firm's MTO status.

Appendix Table A.11 presents robustness to our preferred ETI estimate specification. The unweighted estimates in Column (1), and the estimates in Column (4) predicting tax rates using the 2003-2008 growth trend, are very similar to the main estimates. The estimates in Column (7) and (10), without taxpayer fixed effects – are somewhat larger – the ETI rises to 0.96 and 0.95, respectively. Note that while these are higher, they still indicate that Indonesia is below the Laffer rate on taxes – even using highest estimate (0.96), the revenue-maximizing tax rate is 44 percent.

5.2.3 Complements or substitutes: Does improved tax administration affect the elasticity of taxable income?

We next investigate whether improved tax administration changes the sensitivity of taxable income to the tax rate. As discussed by Slemrod and Kopczuk (2002) and Keen and Slemrod (2017), the sign of the effect is ex-ante ambiguous. For example, improved tax administration may reduce the elasticity of taxable income by making concealment activities more costly. However, these authors stress that the relationship is theoretically ambiguous, in particular, because greater tax administration may make firms more responsive to changes in the tax rate. For example, if firms pay only a share λ of their taxes owed (i.e. pay a tax rate $\lambda\tau$), then the elasticity with respect to the statutory tax rate τ would be higher as λ increases.

We can combine the two sources of variation to estimate this cross-elasticity. Specifically, we weight taxpayers by the weights developed in Section 4.1, so that we are analyzing firms moved to the MTO in 2007 with comparable control firms who were still serviced by regular tax offices. We then estimate equation (14) to calculate the elasticity of taxable income separately for the weighted sample of MTO and non-MTO firms, in order to estimate how

improved tax administration affects this elasticity.

Columns 2 and 3 of Table 3 present the results. We find no statistically significant difference in the elasticity of taxable income for firms that have been moved to the MTO, compared to similar firms who remain in primary tax offices, though the point estimates suggest that the elasticity is smaller in firms moved to the MTO.

5.3 Comparing Changes in Tax Administration and Tax Rates

Suppose the government wants to raise additional tax revenue. Should it do so by raising tax rates, or improving tax administration? Using our estimates of the impacts of one type of improved tax administration – the MTOs – from Section 4, and our estimates of the elasticity of taxable income above – we can shed some light on this calculation, in two ways. First, we can calculate revenue neutral alternatives – that is, we can estimate how much the Ministry of Finance would have had to increase the top corporate income marginal tax rate of 30 percent in 2007 in order to achieve the same additional revenue as the MTO tax office reorganization. Second, we can use these estimates, combined with the theory discussed above, to give conditions under which doing so by improving tax administration is likely to be welfare improving relative to doing so by raising tax rates.

5.3.1 How much would tax rates have to rise to generate the MTO impact?

Recall that in Section 3.1, we derived in equation (7) the relationship between marginal tax rate changes and changes in administration. This is given by:

$$\frac{d\tau}{d\alpha}|_R = -\frac{\tau \frac{dz}{d\alpha} - \frac{da}{d\alpha}}{z \left(1 - \frac{\tau}{1-\tau} \varepsilon_{1-\tau}\right)} \quad (19)$$

where $\tau \frac{dz}{d\alpha} - \frac{da}{d\alpha}$ is the empirically estimated change in tax revenue (net of administration costs) from the introduction of the MTO estimated in Section 4, $\varepsilon_{1-\tau}$ is the estimated elasticity of taxable income with respect to the net of tax rate estimated in Section 5.2.2, and τ is the marginal tax rate from which we are starting. To take this to the data, we modify this equation slightly to account for the fact that we have a progressive tax schedule,

and therefore are considering changes to the top rates. Doing so yields:

$$\frac{d\tau}{d\alpha}|_R = - \frac{\overbrace{\tau \frac{dz}{d\alpha} - \frac{da}{d\alpha}}^{\text{Total MTO effect}}}{\underbrace{N(z^m - \bar{z})}_{\text{Total income subject to raise}} \left[1 - \underbrace{\left(\frac{\tau}{1-\tau} \right) \varepsilon \left(\frac{z^m}{z^m - \bar{z}} \right)}_{\text{Behavioral effect}} \right]} \quad (20)$$

where N is the number of taxpayers above the 2006 taxable income threshold \bar{z} of IDR 100 million (i.e. those already paying the top marginal rate), $\rho = \left(\frac{z^m}{z^m - \bar{z}} \right)$ can be computed from the tax data, and τ is the pre-period, top marginal tax rate (30 percent).

The results using this calculation are shown in Table 4. We provide the MTO estimate used in Column (1), and provide estimates of the tax rate changed needed if applied to MTO firms only in Column (2) and all tax-payers in Column (3).³⁰ As shown in Column (1), the tax changes needed to match the MTO effect are large: to raise the same amount of additional corporate income tax as raised by the MTO would have required raising the corporate income tax rate by 23 percentage points on those firms in the MTO [Column (2)], or raising the corporate income tax rate by 6 percentage points on all firms in our sample.

It is worth emphasizing that these counterfactual tax increases would only replace the additional corporate income tax generated by the MTO. As shown in Table 1, corporate income taxes represent only about 10 percent of the additional tax revenue generated by the MTO. To generate the same amount of total income tax generated by the MTOs (i.e., including individual withholding and other taxes) would have required raising the corporate income tax on all taxpayers by 17 percentage points. It would not be possible to cover the total taxes generated by the MTO through raising the corporate income tax, though of course one could also raise VAT and personal income tax rates.

5.3.2 Conditions for improving tax administration to be welfare-improving, relative to raising tax rates

The theoretical framework also suggests a related calculation to assess whether raising revenue through improved tax administration is welfare-improving on the margin relative to raising revenue through higher tax rates. Recall that equation (20) gives the welfare change

³⁰The MTO estimates in Table 1 were in real terms (2007 rupiah). However, since the tax changes are in nominal terms (i.e., brackets are not indexed), we provide the MTO effect in nominal terms in Column (1).

on the margin from shifting to increased tax administration and reducing marginal tax rates, holding government revenue constant. Modifying this equation to account for the fact that the tax increase applies only to the top bracket yields:

$$dW = \left(\tau \frac{dz}{d\alpha} - \frac{da}{d\alpha} \right) \frac{1}{1 - \frac{\tau}{1-\tau} \rho \varepsilon_{1-\tau}} - \frac{dc}{d\alpha} \quad (21)$$

The first term, $\left(\tau \frac{dz}{d\alpha} - \frac{da}{d\alpha} \right) \frac{1}{1 - \frac{\tau}{1-\tau} \rho \varepsilon_{1-\tau}}$, is essentially the change in the tax rate given in equation (19) multiplied by average taxable incomes z , which we can estimate (see previous section). We do not, however, observe $\frac{dc}{d\alpha}$, the change in a firm’s private compliance costs associated with the MTO, holding the firm’s choices (production levels l and evasion levels e) constant.

Nevertheless, there are several reasons to think that, in our context, equation (21) is positive, which implies that the welfare implications from using improved tax administration to raise more revenue on the margin, rather than higher tax rates, would be positive. First, applying our estimates from Section (5.2.2), the $\frac{1}{1 - \frac{\tau}{1-\tau} \rho \varepsilon_{1-\tau}}$ term is 1.51 in our context. This term is the marginal efficiency cost of funds, equal to $1 +$ the excess burden calculated in equation (18). This term captures how much more efficient it is to raise funds via tax administration rather than tax rates, in terms of lost deadweight-costs of taxation (other than the private costs of compliance $\frac{dc}{d\alpha}$). The fact that $\frac{1}{1 - \frac{\tau}{1-\tau} \rho \varepsilon_{1-\tau}}$ is 1.51 implies that equation (21) would be positive even if revenue gains from improved administration were only 63 percent of additional compliance costs. Second, the fact that the net revenue effect of the MTO, $\left(\tau \frac{dz}{d\alpha} - \frac{da}{d\alpha} \right)$, is so large – two orders of magnitude larger than what it costs the government to administer it $\left(\frac{da}{d\alpha} \right)$ – suggests that it may also be large relative to the *change* in compliance costs associated with the intervention.

Third, the particular intervention that we study was actually an attempt to *reduce* compliance costs, not increase them, by giving taxpayers a higher level of customer service, answering questions, etc. Anecdotal evidence suggests this was the case: a survey of corporate taxpayers in the Jakarta and Banten regions conducted by ACNielsen showed 5 percentage points higher “satisfaction” with tax office interactions at the MTOs compared to PTOs.³¹ One might imagine, then, that the MTO intervention raised the marginal costs of evasion, i.e., raised $\frac{dc}{de}$ while at the same time lowering the *level* of compliance costs. In such a case, the net change in firm compliance costs, $\frac{dc}{d\alpha}$, could be negative even if the marginal cost of

³¹Summary statistics from the ACNielsen survey were obtained from an internal DGT presentation dated January 2016.

evasion could have increased.

6 Shifting enforcement patterns

One surprising finding is that the effects of improved tax administration on firms' reported gross revenues grew substantially over time, despite staffing ratios at the MTOs remaining roughly constant. This is one reason the MTOs look so effective in comparison to tax rate increases.

The theory in Section 3.2 suggests that to understand the impact of improved tax administration, it is important to understand not just whether the improved tax administration (the MTOs) increased the *level* of scrutiny of firms, but how it changed the relationship between firm size and enforcement. To the extent that the MTOs have a flatter relationship between firm size and enforcement – a flatter $\alpha(l)$ function, in the language of the model – it is possible that the move to the MTOs could have both raised revenue, and at the same time led to more firm growth by reducing the “enforcement tax” on larger firms.

To investigate this hypothesis, we examine the relationship between firm size and various types of enforcement actions from the tax department. We measure three types of enforcement actions: formal audits, VAT collection letters, and VAT underpayment letters. These formal actions account for only a small portion of firm interactions with the tax office: an account representative can summon a taxpayer to explain something on their tax form, they can send them a letter for some other purpose, etc. However, we focus on these three actions because they are a) relatively serious followup actions and b) systematically logged in the tax department's IT systems in the same way for both MTO and PTOs. The data on formal audits start in 2008; the other data cover our entire sample period. We also have data on corrections to corporate income tax returns filed by taxpayers, though we note that this variable is harder to interpret in some cases, since if taxpayers file returns that are more accurate to begin with, they would have less reason to correct the returns.

We first document whether the MTO led to greater levels of enforcement. Table 5 re-estimates equation (13) examining some of these variables. Panel A examines corrections to tax returns; Panel B examines VAT underpayment letters.³² We find that being assigned to an MTO leads firms to revise their corporate tax returns. In particular, we find an increase in corporate income tax revisions for *previous* years: that is, once firms enter an MTO, they

³²We cannot examine audits here, because we do not have audit data prior to 2008, i.e. prior to when firms were moved to the MTO. Audits are tracked by DGT using a separate database that began in 2008.

revise their previous returns.

We then turn to estimating the relationship between these enforcement actions and firm size – the empirical $\alpha(l)$ function. Figure 4 presents this non-parametrically. We plot these relationships separately for MTO firms (in blue) and PTO firms (in red), using the same weights that we have used throughout, so that we are comparing ex-ante comparable firms. Panel A shows the relationship estimated with locally weighted regressions (and shows 95 percent confidence intervals shaded); Panel B shows the raw data as a bin-scatter, with a linear regression line fitted separately for the MTO and non-MTO samples.

The results tell a consistent story. In virtually all cases, the *level* of enforcement actions is higher at the MTO than for comparably-sized firms serviced by the PTO. However, the *slope* of enforcement with respect to firm-size – i.e. $\alpha'(l)$ – is substantially flatter at the MTO. Thus, the MTO increased enforcement levels, but made enforcement less size-dependent. Following the logic of Section 3.2, this raises the possibility that the MTO could have reduced the effective tax rate on affected firms, to the extent that the reduced size-dependent “enforcement tax” – i.e., firms no longer have to worry that they will be taxed more if they grow, since they are already taxed – outweighs the direct effects of higher effective taxation.

We test for a change of slope in the $\alpha(l)$ function by estimating the following regressions. We begin with a cross-sectional regression, using the same weights we used in Section (4) so that MTO and non-MTO firms are balanced:

$$Y_{it} = \alpha + \beta_1 M_{iFC} + \beta_2 l_{it} + \beta_3 M_{iFC} \times l_{it} + \delta_y + \epsilon_{it} \quad (22)$$

The key coefficient is β_3 , which shows how the slope of enforcement with respect to firm size l changes for firms assigned to the MTO. This is the regression analogue of Figure 4.

For data on VAT enforcement letters, we observe data in the years prior to 2008 as well. For these variables we can estimate a differences-in-differences version of equation (22):

$$Y_{it} = \alpha + \gamma_1 l_{it} + \gamma_2 M_{iFC} \times l_{it} + \gamma_3 M_{iFC} \times 1_{t>2005} + \gamma_4 M_{iFC} \times l_{it} \times 1_{t>2005} + \delta_y + \delta_i + \epsilon_{it} \quad (23)$$

Here, the key coefficient is γ_4 , which investigates how the slope on firm size changes once the firm is moved to the MTO. We continue to use the same weights as above. For each table, we examine three separate measures of firm size l_{it} : the number of reported permanent employees, the number of reported total employees, and firm gross income.

The results of the cross-sectional version estimated using equation (22) are shown in

Table 6; the difference-in-difference results for the VAT enforcement letters estimated using equation (23) are shown in Table 7. Both tables show similar results: the coefficients on the interaction of $M_{iFC} \times l_{it}$ in Table 6, and the coefficients on the interaction of $M_{iFC} \times l_{it} \times 1_{t>2005}$ in Table 7, are negative (and statistically significant) for all three variables considered. The only case where we do not see consistently robust flattening is in Panel C of Table 6, where regressions are cross-sectional and firm size is measured by reported gross income; we see it in all other specifications considered.

Thus, the tables reinforce the findings from Figure 4: the MTO increases the level of enforcement (shown by the positive main effects on M_{iFC} in the cross-section and $M_{iFC} \times 1_{t>2005}$ in the difference-in-difference regressions, but also reduces the slope of the $\alpha(l)$ function. Quantitatively, the results in Table 6 suggest that the slope of the $\alpha(l)$ function was reduced considerably: reduced by between 62 - 100 percent in the case of audits, and by 43 - 88 percent in the case of the VAT letters. These results suggest a potential explanation for the magnitude of the MTO effects over the 6 years we examined them, and in particular why these effects grew substantially over time: by raising the level of $\alpha(l)$, while subsequently flattening its slope, the MTO may have been able to increase tax compliance while simultaneously reducing the tax-induced barriers to firm growth.

One implication of these results is that the impacts of improved tax administration might be smaller for the very largest firms in the country, such as those served by the large taxpayer office (LTO) (which are outside our sample). For such firms, it is possible that the derivative of enforcement with respect to firm size may already be low, and so greater enforcement would increase the level of enforcement without necessarily flattening the slope.

7 Conclusion

Improving tax revenue in developing countries is a particularly vexing problem, given fundamental parameters in the economy, from high levels of informality to limited banking systems. As such, there is often a debate on whether to invest limited funds in improving tax administration: given these structural features of the economy, would this type of investment have a meaningful return? And, if so, how would this compare against other options – for example, simply raising tax rates?

To address these questions, we estimate the impacts of two nationwide reforms in Indonesia—a large scale administration reform and change in corporate tax rates—that differentially affected medium-sized firms. We find that increasing the intensity of tax administration by

moving the top firms in each region into special “Medium-Sized Taxpayer Offices,” with much higher staff-to-taxpayer ratios, more than doubled tax revenue from affected firms. While there are concerns that new reforms may initially have impacts, but then fade over time as firms learn to evade, we actually find the opposite: impacts increase over the subsequent six years. Note that while this was a large-scale reform, its costs as a fraction of increased revenue were minuscule—less than 1 percent—implying that this investment had a considerable overall return.

In fact, the increase in tax rates needed to achieve a similarly sized effect would be quite large. Using non-linear changes to the corporate income tax schedule, we estimate an elasticity of taxable income of 0.59. On the one hand, this implies that the revenue-maximizing rate is almost double the current rate. On the other hand, every dollar raised through tax rate increases imposes a deadweight burden of 0.51 on firms.. Comparing the two approaches, we calculate that the increased revenue from improvements in tax administration is equivalent to raising the marginal corporate tax rate on affected firms by about 23 percentage points, or about 6 percentage points across all firms. Given these estimates, improved tax administration is likely to be the preferred approach unless the compliance costs imposed on taxpayers are extremely high.

We then investigate why improved administration had such a large effect on the medium-sized firms we study, and in fact, had increasing effects over time, in this context. In regular offices, staff prioritize larger tax payers, generating an additional “enforcement tax” on firm growth – so firms want to avoid growing too large and drawing the attention of the tax authorities. By contrast, the improved administration flattened the relationship between enforcement and size, implying the enforcement tax would be constant across firms within the MTO as they grow. This implies that governments in designing policy, governments should be concerned not only with the level of enforcement, but also how the enforcement level changes as firms evolve.

References

- ABADIE, A. AND M. D. CATTANEO (2018): “Econometric methods for program evaluation,” *Annual Review of Economics*, 10, 465–503.
- ALMUNIA, M. AND D. LOPEZ-RODRIGUEZ (2018): “Under the radar: The effects of monitoring firms on tax compliance,” *American Economic Journal: Economic Policy*, 10, 1–38.

- ATHEY, S. AND G. W. IMBENS (2017): “The state of applied econometrics: Causality and policy evaluation,” *Journal of Economic Perspectives*, 31, 3–32.
- ATHEY, S., G. W. IMBENS, AND S. WAGER (2018): “Approximate residual balancing: debiased inference of average treatment effects in high dimensions,” *Journal of the Royal Statistical Society: Series B (Statistical Methodology)*, 80, 597–623.
- BESLEY, T. AND T. PERSSON (2014): “Why do developing countries tax so little?” *Journal of Economic Perspectives*, 28, 99–120.
- BEST, M. C., A. BROCKMEYER, H. J. KLEVEN, J. SPINNEWIJN, AND M. WASEEM (2015): “Production versus revenue efficiency with limited tax capacity: theory and evidence from Pakistan,” *Journal of political Economy*, 123, 1311–1355.
- BIGIO, S. AND E. ZILBERMAN (2011): “Optimal self-employment income tax enforcement,” *Journal of Public Economics*, 95, 1021–1035.
- BLOMQUIST, S. AND W. NEWEY (2017): “The bunching estimator cannot identify the taxable income elasticity,” Tech. rep., National Bureau of Economic Research.
- BOONZAAIER, W., J. HARJU, T. MATIKKA, AND J. PIIRTILÄ (2018): “How do small firms respond to tax schedule discontinuities? Evidence from South African tax registers,” .
- BRONDOLO, J., F. BOSCH, M. E. LE BORGNE, AND M. C. SILVANI (2008): *Tax administration reform and fiscal adjustment: the case of Indonesia (2001-07)*, 8-129, International Monetary Fund.
- CARRILLO, P., D. POMERANZ, AND M. SINGHAL (2017): “Dodging the taxman: Firm misreporting and limits to tax enforcement,” *American Economic Journal: Applied Economics*, 9, 144–64.
- CHETTY, R. (2009): “Is the taxable income elasticity sufficient to calculate deadweight loss? The implications of evasion and avoidance,” *American Economic Journal: Economic Policy*, 1, 31–52.
- DEHEJIA, R. H. AND S. WAHBA (1999): “Causal effects in nonexperimental studies: Reevaluating the evaluation of training programs,” *Journal of the American statistical Association*, 94, 1053–1062.

- DEVEREUX, M. P., L. LIU, AND S. LORETZ (2014): “The elasticity of corporate taxable income: New evidence from UK tax records,” *American Economic Journal: Economic Policy*, 6, 19–53.
- DWENGER, N. AND V. STEINER (2012): “Profit Taxation and the Elasticity of the Corporate Income Tax Base: Evidence from German Corporate Tax Return Data,” *National Tax Journal*, 65, 117.
- FAN, H., Y. LIU, N. QIAN, AND J. WEN (2018): “The Dynamic Effects of Computerized VAT Invoices on Chinese Manufacturing Firms,” Tech. rep., National Bureau of Economic Research.
- FELDSTEIN, M. (1999): “Tax avoidance and the deadweight loss of the income tax,” *Review of Economics and Statistics*, 81, 674–680.
- FUEST, C., A. PEICHL, AND S. SIEGLOCH (2018): “Do higher corporate taxes reduce wages? Micro evidence from Germany,” *American Economic Review*, 108, 393–418.
- FULLERTON, D. ET AL. (1999): “Marginal effective tax rate,” *The Encyclopedia of taxation and tax policy*, 270–272.
- GORDON, R. AND W. LI (2009): “Tax structures in developing countries: Many puzzles and a possible explanation,” *Journal of Public Economics*, 93, 855–866.
- GRUBER, J. AND J. RAUH (2007): “How elastic is the corporate income tax base,” *Taxing corporate income in the 21st century*, 140–163.
- GRUBER, J. AND E. SAEZ (2002): “The elasticity of taxable income: evidence and implications,” *Journal of public Economics*, 84, 1–32.
- HAINMUELLER, J. (2012): “Entropy balancing for causal effects: A multivariate reweighting method to produce balanced samples in observational studies,” *Political Analysis*, 20, 25–46.
- HECKMAN, J. J., H. ICHIMURA, AND P. E. TODD (1997): “Matching as an econometric evaluation estimator: Evidence from evaluating a job training programme,” *The review of economic studies*, 64, 605–654.
- HSIEH, C.-T. AND B. A. OLKEN (2014): “The missing “missing middle,”” *Journal of Economic Perspectives*, 28, 89–108.

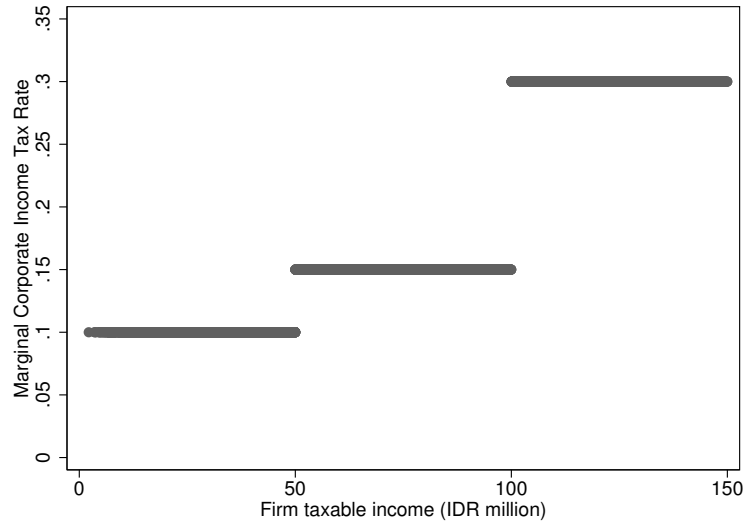
- JENSEN, A. (2019): “Employment Structure and the Rise of the Modern Tax system,” Tech. rep., National Bureau of Economic Research.
- KATZ, L. F., J. R. KLING, AND J. B. LIEBMAN (2001): “Moving to Opportunity in Boston: Early Results of a Randomized Mobility Experiment*,” *The Quarterly Journal of Economics*, 116, 607–654.
- KAWANO, L. AND J. SLEMROD (2016): “How do corporate tax bases change when corporate tax rates change? With implications for the tax rate elasticity of corporate tax revenues,” *International Tax and Public Finance*, 23, 401–433.
- KEEN, M. AND J. SLEMROD (2017): “Optimal tax administration,” *Journal of Public Economics*, 152, 133–142.
- KHAN, A. Q., A. I. KHWAJA, AND B. A. OLKEN (2016): “Tax farming redux: Experimental evidence on performance pay for tax collectors,” *The Quarterly Journal of Economics*, 131, 219–271.
- KLEVEN, H. J., C. T. KREINER, AND E. SAEZ (2016): “Why can modern governments tax so much? An agency model of firms as fiscal intermediaries,” *Economica*, 83, 219–246.
- LEMGRUBER, M. A., M. A. MASTERS, AND M. D. CLEARY (2015): *Understanding revenue administration: an initial data analysis using the revenue administration fiscal information tool*, International Monetary Fund.
- NARITOMI, J. (2018): “Consumers as tax auditors,” .
- POMERANZ, D. (2015): “No taxation without information: Deterrence and self-enforcement in the value added tax,” *American Economic Review*, 105, 2539–69.
- SAEZ, E., J. SLEMROD, AND S. H. GIERTZ (2012): “The elasticity of taxable income with respect to marginal tax rates: A critical review,” *Journal of economic literature*, 50, 3–50.
- SERRATO, J. C. S. AND O. ZIDAR (2018): “The structure of state corporate taxation and its impact on state tax revenues and economic activity,” *Journal of Public Economics*, 167, 158–176.
- SLEMROD, J. AND W. KOPCZUK (2002): “The optimal elasticity of taxable income,” *Journal of Public Economics*, 84, 91–112.

STUART, E. A. (2010): “Matching methods for causal inference: A review and a look forward,” *Statistical science: a review journal of the Institute of Mathematical Statistics*, 25, 1.

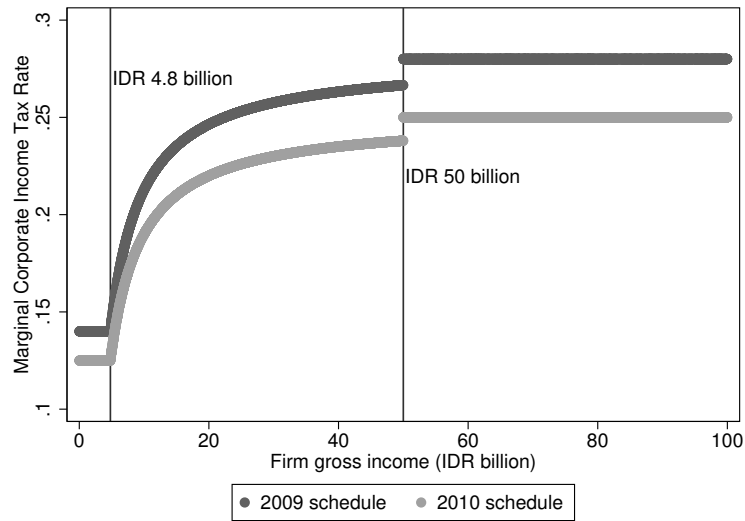
SUÁREZ SERRATO, J. C. AND O. ZIDAR (2016): “Who benefits from state corporate tax cuts? A local labor markets approach with heterogeneous firms,” *American Economic Review*, 106, 2582–2624.

Figure 1: Change in Corporate Income Tax Schedule

Panel A: Tax Schedule Prior to 2009
(Marginal tax rates vs. Taxable Income)



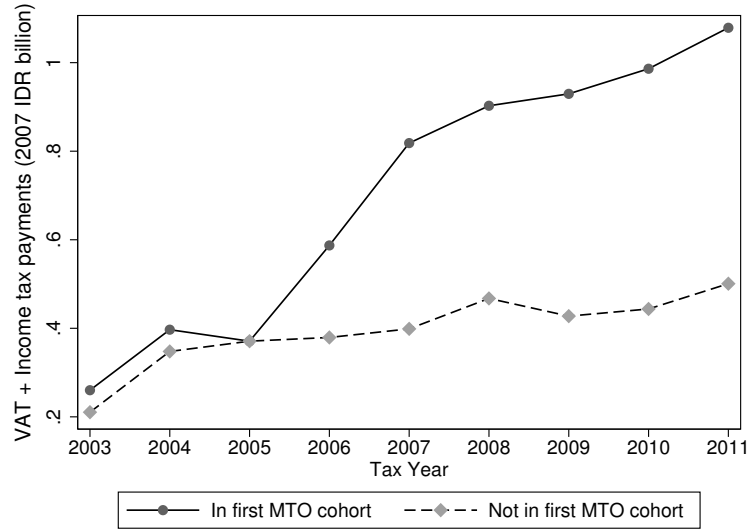
Panel B: Tax Schedule 2009 and later
(Marginal tax rates vs. Gross Income)



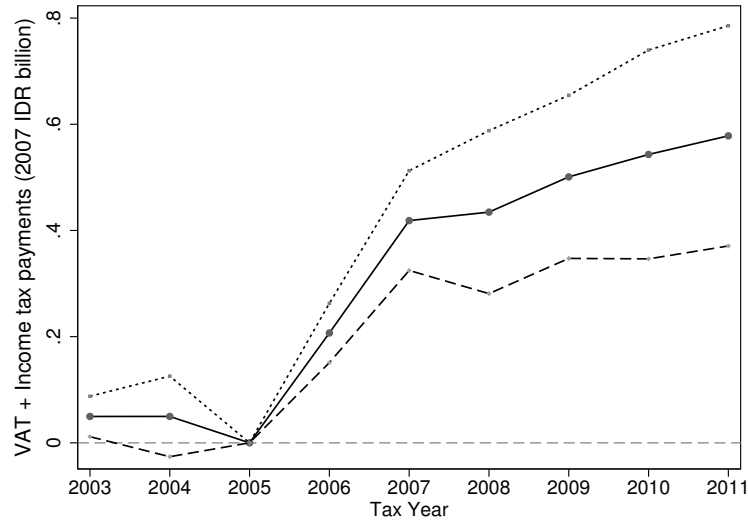
Notes: This figure shows corporate income tax rate schedules from before (Equation 15 and Panel A) and after (Equation 16 and Panel B) Indonesia's 2009 corporate income tax rate reform. Pre-reform rates were based on taxable income cutoffs. Post-reform rates were based on gross income cutoffs. In both periods, corporate income tax rates were applied to taxable income.

Figure 2: MTO effect on Total Taxes Paid

Panel A: MTO vs. non-MTO weighted annual averages



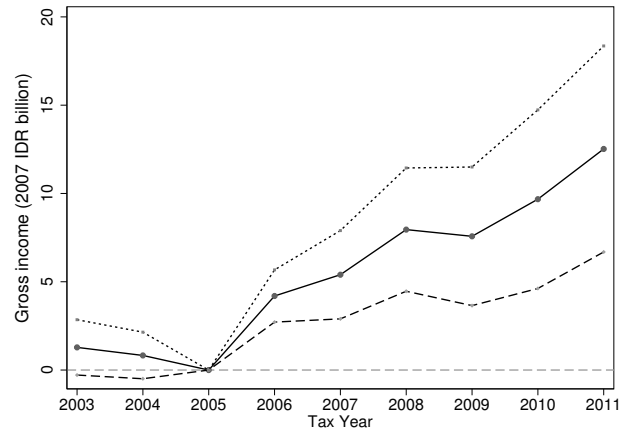
Panel B: Year-by-year estimates



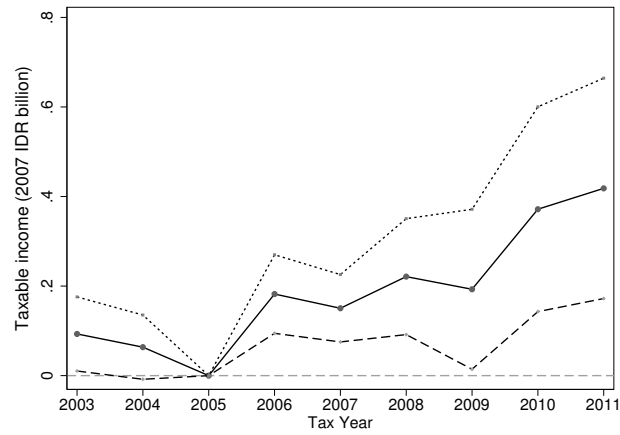
Notes: This figure shows annual weighted averages by MTO 2007 assignment group (Panel A) and year-by-year weighted regression estimates of the effect of MTO 2007 assignment on total taxes paid (Panel B). Regression coefficients are year-by-year reduced form effects of MTO treatment, and are estimated by interacting the MTO assignment dummy variable M_{iFC} in Equation 12 with year dummies, while omitting the interaction and main effect dummies for base year 2005. The weights used in both panels are taxpayer-specific, fixed across all analyses, and constructed by applying Hainmueller (2012)'s entropy-balancing methodology to the MTO assignment formula inputs (gross income and total taxes paid) for tax year 2005. Taxpayer-level total taxes paid data are from the Treasury, and include payments from all branches of the same corporate entities. IDR values are deflated to 2007 IDR using Indonesia's GDP deflator. Solid lines are point estimates; dashed lines are 95% confidence intervals based on standard errors clustered at the taxpayer level.

Figure 3: MTO effect on Reported Income

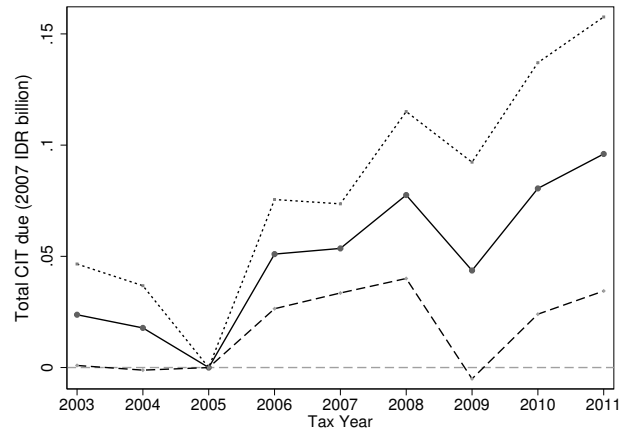
Panel A: Gross income



Panel B: Taxable Income

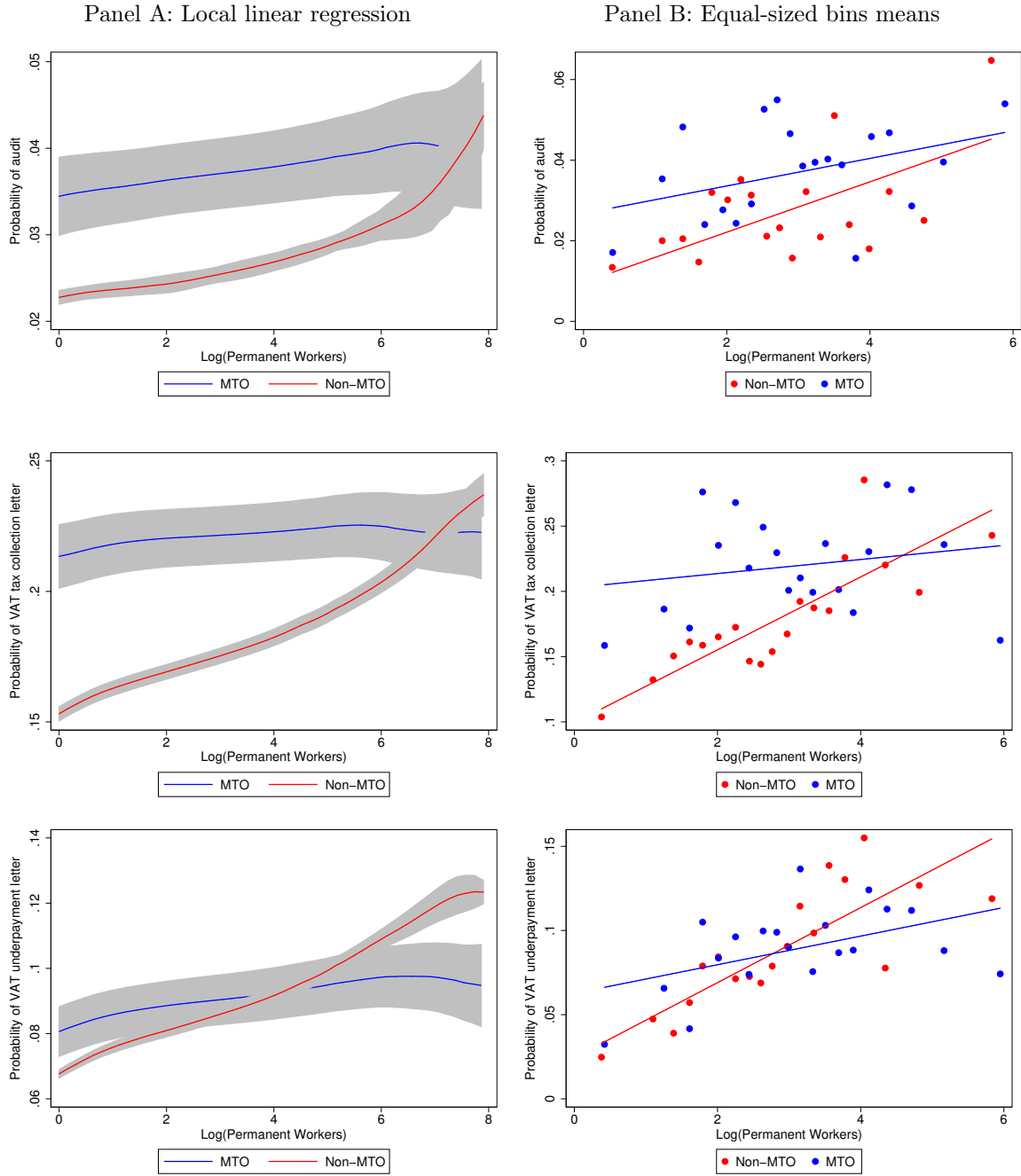


Panel C: Corporate Income Taxes Due



Notes: See notes to Figure 2. Reported income data are from tax filing form SPT 1771 (annual corporate income tax return), and are reported by the taxpayer headquarters on behalf of all branches of the same corporate entity.

Figure 4: Probability of audit and assessment as a function of permanent workers



Notes: This figure shows estimates of the probability of audit and VAT tax assessment (receivership of tax collection letter or underpayment letter) as a function of taxpayer log total permanent workers. Panel A shows local linear regression estimates using an Epanechnikov Kernel of bandwidth 2. Panel B shows binned scatterplots plot means of the y -axis variable over 20 equal-sized (that is, with equal number of observations) bins, separately constructed based on the weighted x -axis distributions of MTO and Non-MTO taxpayers. All plots are based on weighted post-MTO assignment data. Probability of audit is based on 2009-2011 audit data. Probability of VAT collection letter and of VAT underpayment letter are based on 2006-2011 tax assessment letters data. Firm employment data are from corporate employment tax withholding form SPT 1721.

Table 1: MTO treatment effect on Tax Payments, Reported Income, and Tax Collection Rate

(Figures in 2007 IDR billion)

	Weighted means		Treated post-treatment counterfactual (3)	MTO treatment effect			
	Pre-treatment			Reduced Form (4)	IV (5)	IV effect as % of	
	Untreated (1)	Treated (2)				Post-treatment counterfactual (6)	Post-treatment total outcome (7)
<i>Panel A: Tax Payments</i>							
VAT	0.26	0.26	0.27	0.240 (0.050)	0.371 (0.078)	137%	5.8%
Corporate Income Tax	0.03	0.04	0.06	0.032 (0.008)	0.051 (0.013)	87%	4.8%
Other income taxes	0.07	0.06	0.09	0.055 (0.013)	0.087 (0.020)	100%	4.8%
Total	0.37	0.37	0.41	0.340 (0.062)	0.525 (0.096)	128%	5.7%
<i>Panel B: Reported Income</i>							
Gross income	13.03	13.03	12.04	5.754 (1.375)	9.131 (2.181)	76%	4.1%
Taxable income	0.39	0.46	0.50	0.150 (0.045)	0.238 (0.072)	47%	3.1%
Corporate Income Tax due	0.09	0.12	0.13	0.041 (0.012)	0.065 (0.020)	51%	3.3%
Profit margin (net income/ gross income)	0.06	0.07	0.07	0.001 (0.002)	0.001 (0.003)	1%	0.1%
<i>Panel C: Tax Collection Rate</i>							
CIT Paid / CIT Due	0.73	0.48	0.69	0.012 (0.132)	0.020 (0.216)	3%	0.2%

Notes: This table presents estimates of the MTO treatment effect on tax payments, reported income, and Corporate Income Tax (CIT) collection rate. Columns (1)-(2) show pre-treatment (specifically, tax year 2005) weighted means for untreated and treated taxpayers, respectively. Column (3) shows post-treatment weighted means for the treated group absent treatment (that is, counterfactual means), and is computed by subtracting the MTO IV treatment effect in Column (5) from the treated group's realized post-treatment weighted mean. Column (4) presents estimates of the effect of being assigned to MTO in 2007 (that is, the reduced form) according to Equation 12, while Column (5) presents the IV estimates of MTO treatment as specified in Equation 13. Column (6) benchmarks the IV effects in Column (5) as a percentage of counterfactual means in Column (3). Column (7) benchmarks these same effects against the post-treatment realized sum, including all taxpayers in the analysis sample, of each respective outcome variable. Means in Columns (1)-(3) and estimates in Columns (4)-(5) are all weighted by the same taxpayer-specific balancing weights. Weights are constructed by applying Hainmueller (2012)'s entropy-balancing methodology to the MTO assignment formula inputs (gross income and total taxes paid) for tax year 2005. Tax payments data are from the Treasury and include payments from all branches of the same corporate entity. Reported income data are from tax filing form SPT 1771 and are reported by the taxpayer headquarter on behalf of all branches of the same corporate entity. IDR values are deflated to 2007 IDR using Indonesia's GDP deflator. Standard errors are clustered at the taxpayer level.

Table 2: MTO treatment effect on Reported Employment

	Weighted means			MTO treatment effect			
	Pre-treatment		Treated post-treatment counterfactual	Reduced Form	IV	IV effect as % of	
	Untreated	Treated				Post-treatment counterfactual	Post-treatment total outcome
	(1)	(2)	(3)	(4)	(5)	(6)	(7)
Total workers	93.31	167.37	162.53	6.960 (12.032)	12.646 (21.865)	8%	0.7%
Permanent workers	36.36	43.80	49.19	5.705 (3.309)	10.365 (6.009)	21%	1.5%
Temporary workers	56.95	123.57	113.34	1.256 (11.650)	2.281 (21.168)	2%	0.2%
Total wage bill (2007 IDR billion)	1.11	1.33	1.37	0.182 (0.077)	0.330 (0.139)	24%	1.7%
Permanent workers	0.69	0.81	0.92	0.106 (0.055)	0.193 (0.100)	21%	1.5%
Temporary workers	0.41	0.52	0.44	0.075 (0.053)	0.136 (0.097)	31%	2.1%
Average yearly wage (2007 IDR million)	16.33	16.28	15.04	1.296 (0.561)	2.390 (1.031)	16%	1.0%
Permanent workers	19.14	19.36	17.25	1.537 (0.307)	2.855 (0.571)	17%	1.1%
Temporary workers	10.18	10.49	7.79	0.160 (0.367)	0.325 (0.745)	4%	0.4%

Notes: See notes to Table 1. Firm employment and wage data are from corporate employment tax withholding form SPT 1721, and excludes tax year 2008, for which data are not available. See Data Appendix for details.

Table 3: Estimated Elasticity of Taxable Income w.r.t. the Net-of-TaxRate

<i>Panel A: First Stage</i>			
	Instrument: Reform-induced change in marginal tax rate		
	Separate by MTO status		
	All taxpayers	MTO	Not MTO
	(1)	(2)	(3)
Endogenous:	0.980	0.981	0.982
$\Delta \text{Ln}(\text{Net-of-tax rate})$	(0.010)	(0.018)	(0.010)
F-statistic	3,629.32	1,112.23	3,250.73
<i>Panel B: IV (ETI estimates)</i>			
Outcome:	0.590	0.348	0.779
$\Delta \text{Ln}(\text{Taxable Income})$	(0.198)	(0.379)	(0.216)
P-value of difference	0.322		
Taxpayer FE	Yes	Yes	Yes
Year FE	Yes	Yes	Yes

Notes: This table presents instrumental variable (IV) estimates of the corporate Elasticity of Taxable Income (ETI) based on Indonesia's 2009 corporate income tax schedule reform and 2010 marginal tax rate cut. Panel A presents first stage effects of the reform-induced predicted change in marginal tax rates on realized marginal tax rates according to Equation 17. Realized marginal tax rates are computed according to the schedule rules in Equations 15 and 16. Panel B presents IV estimates of the effect of log marginal net-of-tax rates on log taxable income (that is, ETI estimates) according to Equation 14. The estimation sample is composed of the same taxpayers as in the MTO treatment effect analyses, and consists of data for the years immediately surrounding the reform (2008-2010). All regressions are weighted by the same taxpayer-specific weights as in the MTO treatment effect analyses. In addition to taxpayer and year fixed effects, all regressions control for base year log taxable income and base year log gross income. The p-value of the test for difference between the MTO and Non-MTO ETIs is shown between Columns (2) and (3). Standard errors are clustered at the taxpayer level.

Table 4: Counterfactual CIT income tax increases to match MTO effects

	MTO IV treatment effect (IDR billion)	MTR raise needed to generate MTO effect on total revenue	
		Taxing MTO taxpayers	Taxing all taxpayers
		(1)	(2)
Corporate Income Tax	0.064	23 pp	6 pp
Total Income Taxes	0.180	xx	17 pp

Notes: This table presents estimates of by how much Indonesia would have had to raise its 2006 top marginal corporate income tax (CIT) rate of 30 percent in order to generate the same total revenue gains as the MTO effect, following calculations described in the text. Counterfactuals in Columns (2)-(3) are computed by plugging the MTO treatment effect on in Column (1) and the ETI estimate of 0.590 from Table 3 into Equation 4. Because taxpayers' behavioral response to marginal tax rate increases (and therefore the ETI) are with respect to nominal (not real or IDR-deflated) values, the MTO treatment effect used for the counterfactual and displayed in Column (1) is MTO effect on nominal (not real or IDR-deflated) corporate income taxes and total income taxes. The remaining non-schedule inputs of Equation 4 are computed from the taxpayer-level data depending on which sample of taxpayers is assumed to received the counterfactual tax rate increase. Column (2) assumes only MTO taxpayers would be taxed; while Column (3) assumes all taxpayers in the analysis sample would be taxed.

Table 5: Impacts of MTO on Corporate Income Tax Corrections and VAT underpayment letters

	Weighted means			MTO treatment effect			
	Pre-treatment		Treated post-treatment counterfactual	Reduced Form	IV	IV effect as % of	
	Untreated	Treated				Post-treatment counterfactual	Post-treatment total outcome
	(1)	(2)	(3)	(4)	(5)	(6)	(7)
<i>Panel A: Corporate Income Tax Corrections</i>							
Filed any corrections	0.13	0.06	0.07	0.076 (0.008)	0.118 (0.012)	177%	5.8%
Corrected this tax year's figures	0.21	0.36	0.24	-0.052 (0.012)	-0.080 (0.019)	-33%	-3.2%
<i>Panel B: VAT tax assessment letters</i>							
Tax collection letter	0.21	0.25	0.22	-0.004 (0.012)	-0.007 (0.018)	-3%	-0.2%
Underpayment letter	0.12	0.12	0.08	0.001 (0.009)	0.001 (0.014)	1%	0.1%

Notes: See notes to Table 1. This table presents estimates of the MTO treatment effect on tax filing corrections and VAT tax assessments.

Table 6: Enforcement, Firm Size, and the MTO: Cross-Sectional Evidence

	Outcome		
	Audited (1)	Received VAT Collection Letter (2)	Received VAT Underpayment Letter (3)
<i>Panel A: Measuring firm size as permanent workers</i>			
Assigned to MTO in 2007	0.054 (0.016)	0.106 (0.016)	0.042 (0.011)
Ln(Permanent Workers)	0.014 (0.005)	0.028 (0.004)	0.023 (0.003)
Ln(Permanent Workers) x Assigned to MTO in 2007	-0.014 (0.006)	-0.022 (0.006)	-0.013 (0.004)
<i>Panel B: Measuring firm size as total workers</i>			
Assigned to MTO in 2007	0.037 (0.016)	0.115 (0.016)	0.034 (0.011)
Ln(Total Workers)	0.013 (0.004)	0.024 (0.003)	0.021 (0.003)
Ln(Total Workers) x Assigned to MTO in 2007	-0.008 (0.005)	-0.021 (0.005)	-0.009 (0.004)
<i>Panel C: Measuring firm size as gross income</i>			
Assigned to MTO in 2007	0.006 (0.009)	0.044 (0.011)	-0.005 (0.006)
Ln(Gross income)	0.016 (0.003)	0.027 (0.003)	0.022 (0.002)
Ln(Gross income) x Assigned to MTO in 2007	-0.001 (0.005)	-0.009 (0.005)	0.002 (0.003)
	Years	2009-2011	2006-2011
	Year FE	Yes	Yes
	Firm FE	No	No

Notes: This table presents cross-sectional regression estimates of the effect of MTO 2007 assignment on the slope of several measures of enforcement as a function of several measures of taxpayer size. Regression coefficients for alternative measures of enforcement are presented in Columns (1)-(3). Regressions are separately estimated in Panels A through C given alternative measures of taxpayer size, and including the regressors listed on the left-most column of each panel. All regressions are weighted by the same taxpayer-specific balancing weights as in the MTO treatment effect and ETI estimation analyses. Standard errors are heteroskedasticity-robust.

Table 7: Enforcement, Firm Size, and the MTO: Differences-in-difference estimates

	Outcome		
	Received VAT Collection Letter (1)	Received VAT Underpayment Letter (2)	
<i>Panel A: Measuring firm size as permanent workers</i>			
Assigned to MTO in 2007 x (Year>2005)	0.069 (0.024)	0.067 (0.016)	
Ln(Permanent Workers)	0.042 (0.013)	0.020 (0.014)	
Ln(Permanent Workers) x Assigned to MTO in 2007	-0.004 (0.016)	0.006 (0.015)	
Ln(Permanent Workers) x Assigned to MTO in 2007 x (Year>2005)	-0.026 (0.007)	-0.022 (0.005)	
<i>Panel B: Measuring firm size as total workers</i>			
Assigned to MTO in 2007 x (Year>2005)	0.068 (0.026)	0.056 (0.018)	
Ln(Total Workers)	0.019 (0.006)	0.008 (0.005)	
Ln(Total Workers) x Assigned to MTO in 2007	0.001 (0.009)	0.003 (0.007)	
Ln(Total Workers) x Assigned to MTO in 2007 x (Year>2005)	-0.020 (0.006)	-0.014 (0.005)	
<i>Panel C: Measuring firm size as gross income</i>			
Assigned to MTO in 2007 x (Year>2005)	0.022 (0.020)	0.025 (0.012)	
Ln(Gross income)	0.016 (0.006)	0.008 (0.004)	
Ln(Gross income) x Assigned to MTO in 2007	0.011 (0.010)	0.016 (0.007)	
Ln(Gross income) x Assigned to MTO in 2007 x (Year>2005)	-0.022 (0.009)	-0.016 (0.006)	
	Years	2003-2011	2003-2011
	Firm FE	Yes	Yes
	Year FE	Yes	Yes

Notes: This table presents taxpayer-level difference-in-differences regression estimates of the effect of MTO 2007 assignment on the slope of several measures of enforcement as a function of several measures of taxpayer size. Regression coefficients for alternative measures of enforcement are presented in Columns (1)-(2). Regressions are separately estimated in Panels A through C given alternative measures of taxpayer size, and including the regressors listed on the left-most column of each panel. All regressions are weighted by the same taxpayer-specific balancing weights as in the MTO treatment effect and ETI estimation analyses. Standard errors are clustered at the taxpayer level.

Online Appendix

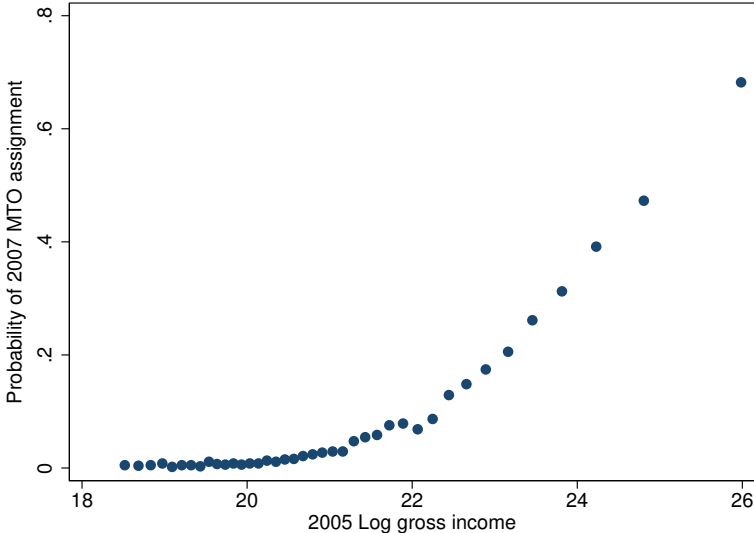
Table A.1: Tax Office Staffing

	Medium Taxpayer Offices (MTO)				Non-MTO tax offices in same regions			
	2008 (1)	2009 (2)	2010 (3)	2011 (4)	2008 (5)	2009 (6)	2010 (7)	2011 (8)
Taxpayers-to-staff ratios								
Taxpayers per Auditor	18	24	23	21	107	107	115	125
Taxpayers per AR	17	26	25	20	56	105	93	80
Taxpayers per staff	4	6	6	6	10	16	17	17
Auditors								
Total auditors	329	370	366	361	1,109	1,667	1,643	1,591
Has college degree	0.79	0.79	0.84	0.90	0.74	0.64	0.70	0.75
Female	0.07	0.07	0.07	0.06	0.09	0.09	0.09	0.09
Years in DGT	8.6	9.1	10.1	11.1	7.8	7.7	8.7	9.7
Monthly salary (2007 IDR thousands)	6,227	5,920	5,616	5,880	6,066	5,470	5,167	5,295
Account Reporesentatives								
Total ARs	349	341	341	369	2,101	1,862	2,057	2,494
Has college degree	0.83	0.86	0.85	0.81	0.70	0.70	0.68	0.70
Female	0.16	0.17	0.23	0.23	0.27	0.32	0.31	0.32
Years in DGT	8.3	9.2	9.9	10.4	7.9	9.0	9.6	9.8
Monthly salary (2007 IDR thousands)	4,502	4,426	4,237	4,279	4,490	4,417	4,114	4,073

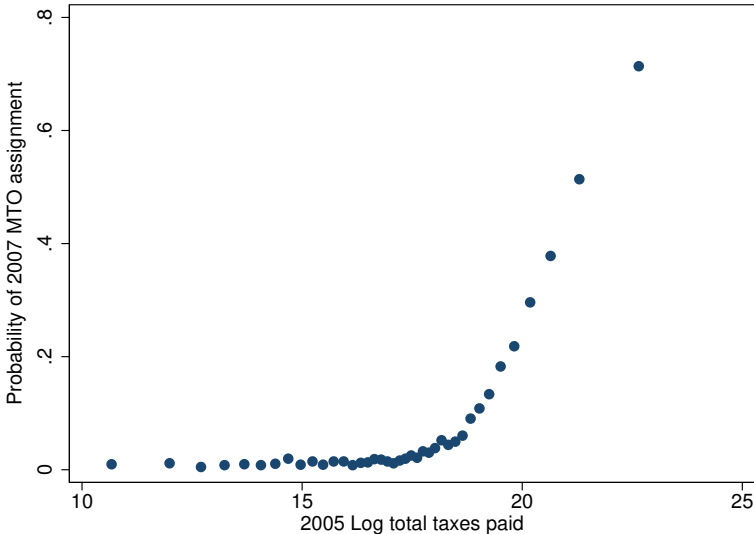
Notes: This table displays tax office staffing descriptive statistics for MTO and non-MTO tax offices. Tax office staff composition data are from DGT's internal human resources database.

Figure A.1: Probability of MTO assignment

Panel A: As a function of match year gross income



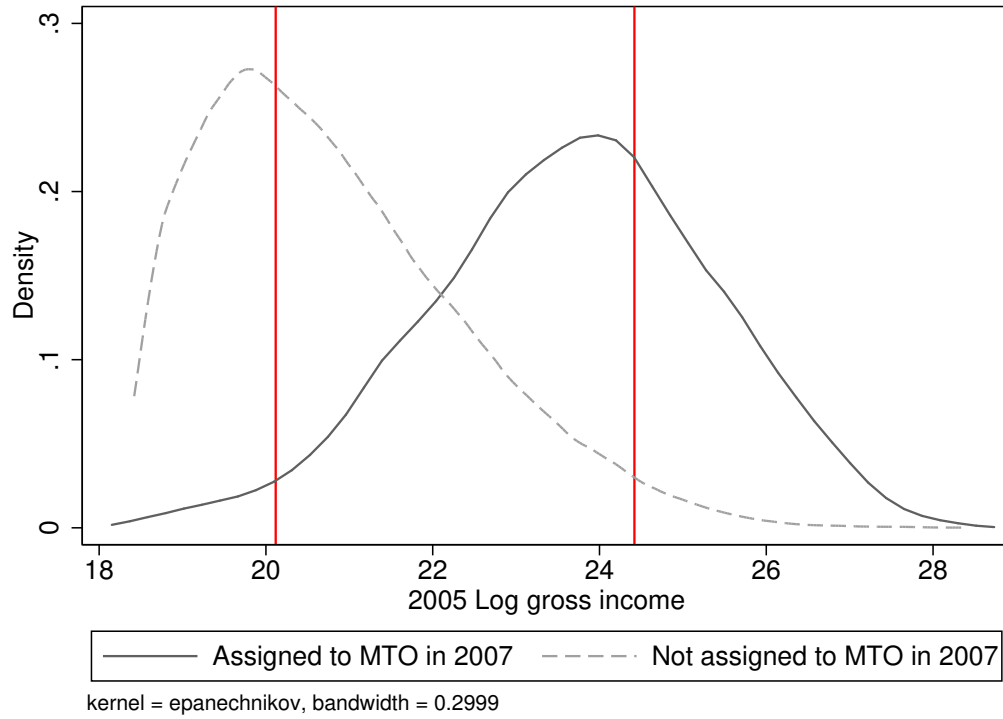
Panel B: As a function of match year total taxes paid



Notes: This figure displays the percent of taxpayers assigned to MTO in 2007 as a function of MTO assignment input variables (total taxes paid and gross income) for tax year 2005. Percentages are plotted against forty equal-sized bins of the 2005 log gross income and log total taxes paid distribution of taxpayers in eligible origin tax offices as of 2006.

Figure A.2: Common support in taxpayer size distributions

Panel A: Gross income



Panel B: Total taxes paid

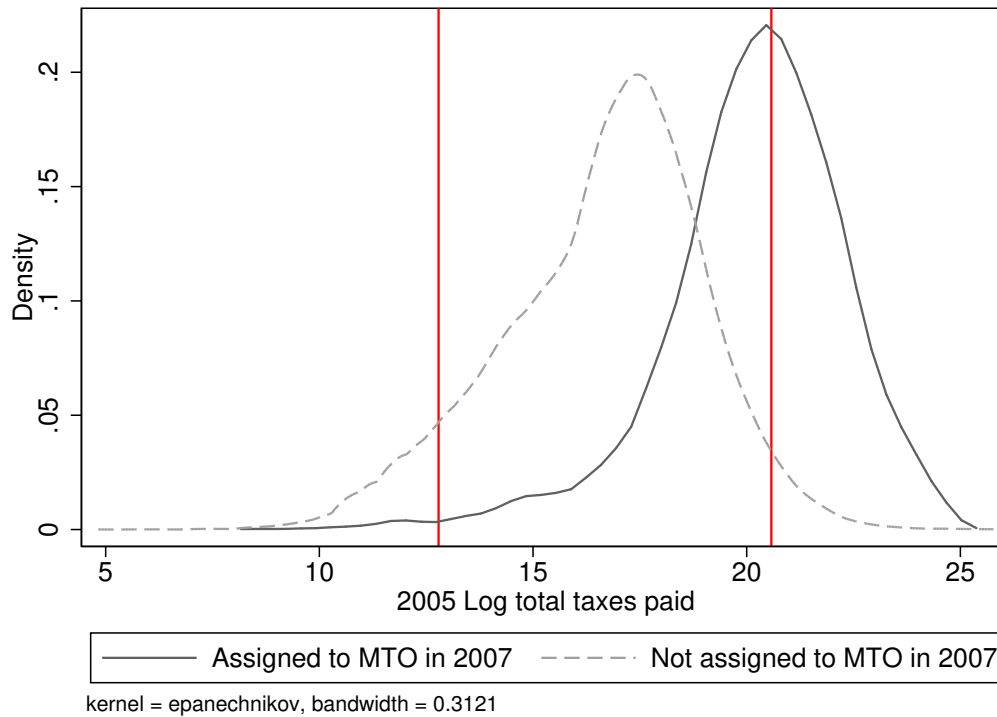
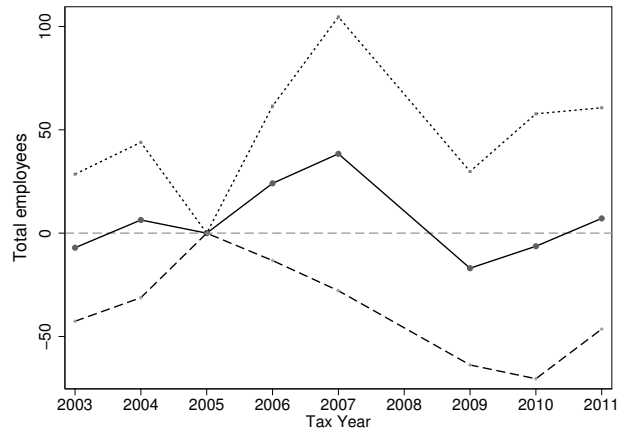
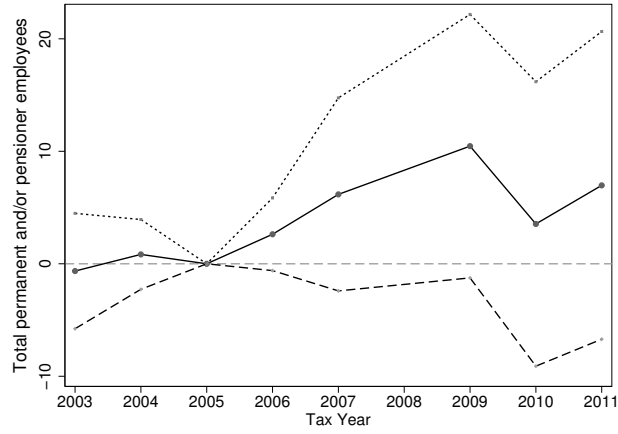


Figure A.3: MTO effect on Employment

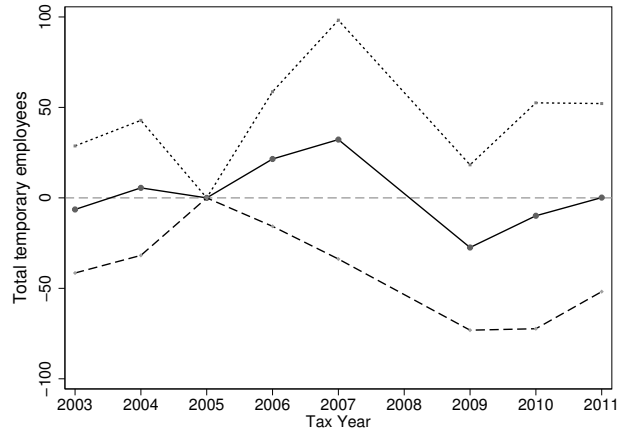
Panel A: All workers



Panel B: Permanent

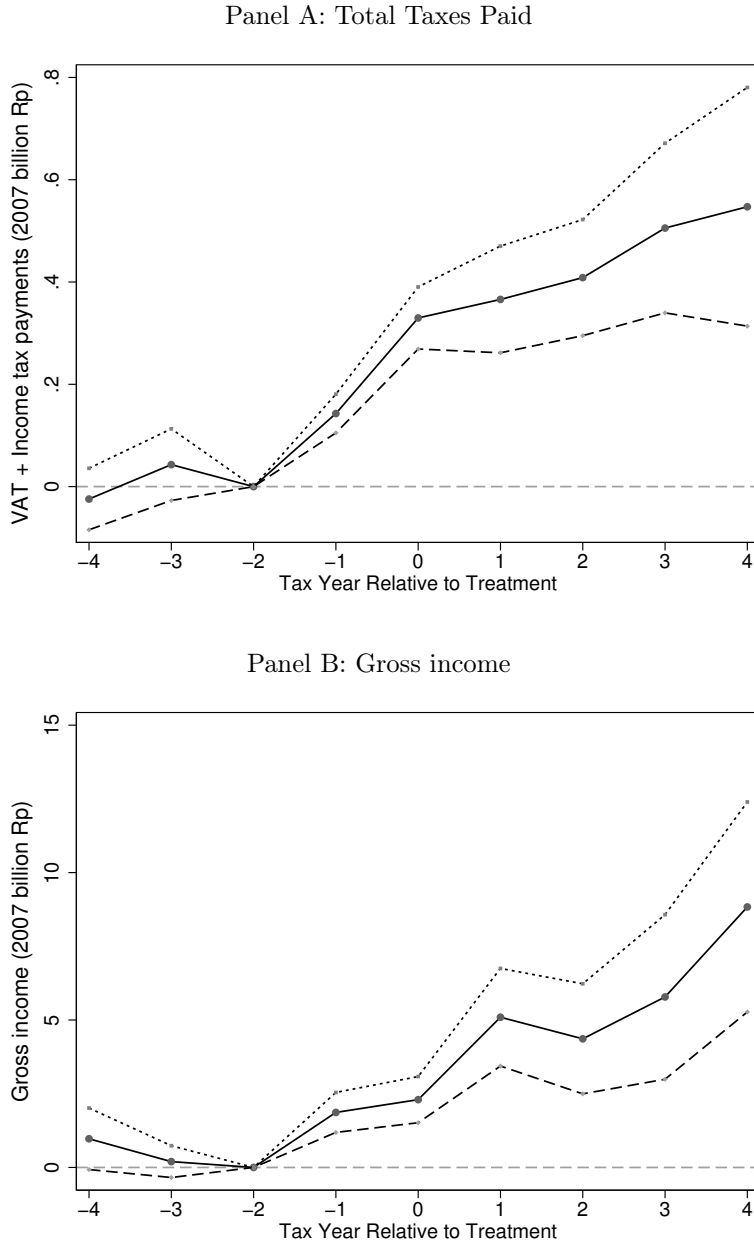


Panel C: Temporary



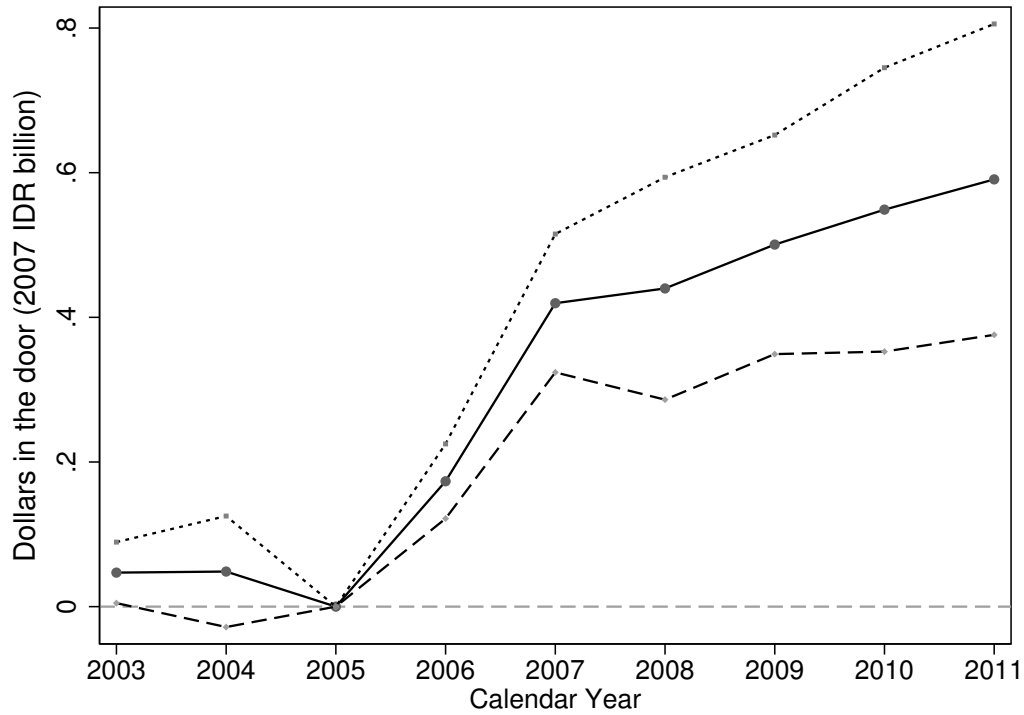
Notes: See notes to Figure 2. Firm employment data are from corporate employment tax withholding form SPT 1721. Employment data for tax year 2008 are not available. See Data Appendix for details.

Figure A.4: MTO effects, including MTOs started in 2005 and 2006



Notes: This figure shows year-by-year reduced form effects of MTO treatment on total taxes paid and gross income including the 5 MTOs created in 2005 and 2006 to the main sample of 13 MTOs created in 2007. Year-by-year effects are estimated relative to the year of MTO assignment by stacking the 2005, 2006, and 2007 MTO assignment cohorts, and slightly modifying Equation 12 to be defined in relative years. In particular, year-by-year effects are coefficients on interactions of the MTO assignment dummy variable M_{i0} (equivalent to M_{iFC} in Equation 12) with year dummies. As before, we omit the interaction and main effect dummies for base relative year -2 (the last tax year that whose filings would have been available to the tax office at the time of each MTO assignment in relative year zero). As MTO assignment occurred in different years, year fixed effects are also included. The stacked regression is weighted following the same balancing methodology as in Figure 2. Specifically, the weights used are taxpayer-specific and constructed by applying Hainmueller (2012)'s entropy-balancing methodology to the MTO assignment formula inputs (gross income and total taxes paid). The formula inputs are for tax year 2005 for the 2007 MTO cohort, tax year 2004 for the 2006 cohort, and tax year 2003 for the 2005 cohort. Taxpayer-level total taxes paid data are from the Treasury, and include payments from all branches of the same corporate entities. Reported income data are from tax filing form SPT 1771 (annual corporate income tax return), and are reported by the taxpayer headquarters on behalf of all branches of the same corporate entity. IDR values are deflated to 2007 IDR using Indonesia's GDP deflator. Solid lines are point estimates; dashed lines are 95% confidence intervals based on standard errors clustered at the taxpayer level.

Figure A.5: MTO effect on calendar year total tax revenues



Notes: See notes to Figure 2. Dollars in the door is defined as the total amount of taxes paid in each x-axis year irrespective of the tax year to which the payment corresponded. Tax payments data, including payment dates and tax year information, are from the Treasury.

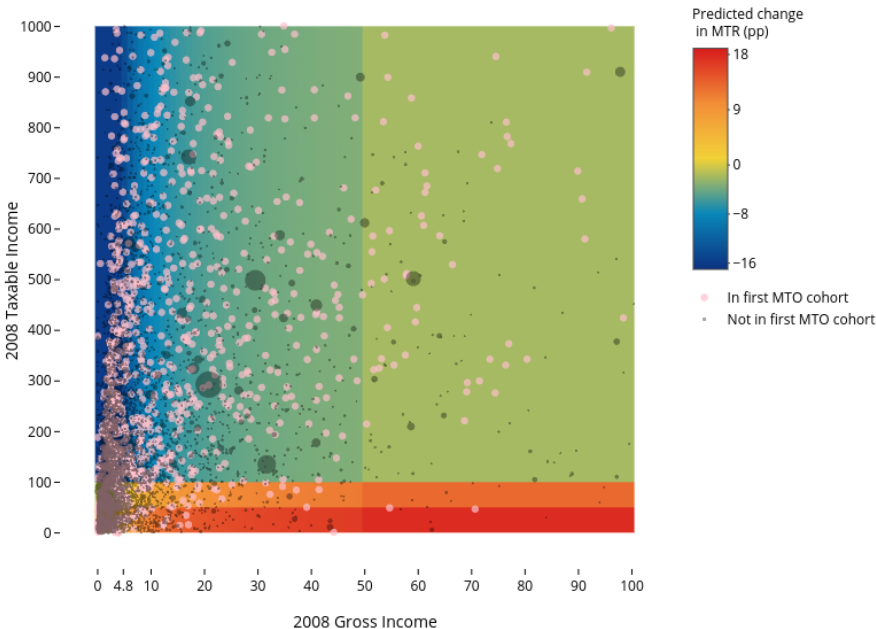
Table A.2: Indonesia's Medium Taxpayer Offices

MTO	Included in Analysis?	Creation	
		Year	Overseen Provinces or Districts
KPP Madya Jakarta Pusat	No	2004	DKI Jakarta (Center)
KPP Madya Batam	No	2005	Riau
KPP Madya Pekanbaru	No	2006	Riau Islands
KPP Madya Denpasar	No	2006	Bali
KPP Madya Tangerang	No	2006	Banten
KPP Madya Bekasi	No	2006	West Java
KPP Madya Jakarta Barat	Yes	2007	DKI Jakarta (West)
KPP Madya Jakarta Selatan I	Yes	2007	DKI Jakarta (South)
KPP Madya Jakarta Timur	Yes	2007	DKI Jakarta (East)
KPP Madya Jakarta Utara	Yes	2007	DKI Jakarta (North)
KPP Madya Bandung	Yes	2007	West Java
KPP Madya Semarang	Yes	2007	Central Java
KPP Madya Surabaya	Yes	2007	East Java
KPP Madya Sidoarjo	Yes	2007	East Java
KPP Madya Malang	Yes	2007	East Java
KPP Madya Balikpapan	Yes	2007	East Kalimantan
KPP Madya Makassar	Yes	2007	South, Southeast, and West Sulawesi
KPP Madya Palembang	Yes	2007	South Sumatra and Bangka Belitung Islands
KPP Madya Medan	Yes	2007	North Sumatra

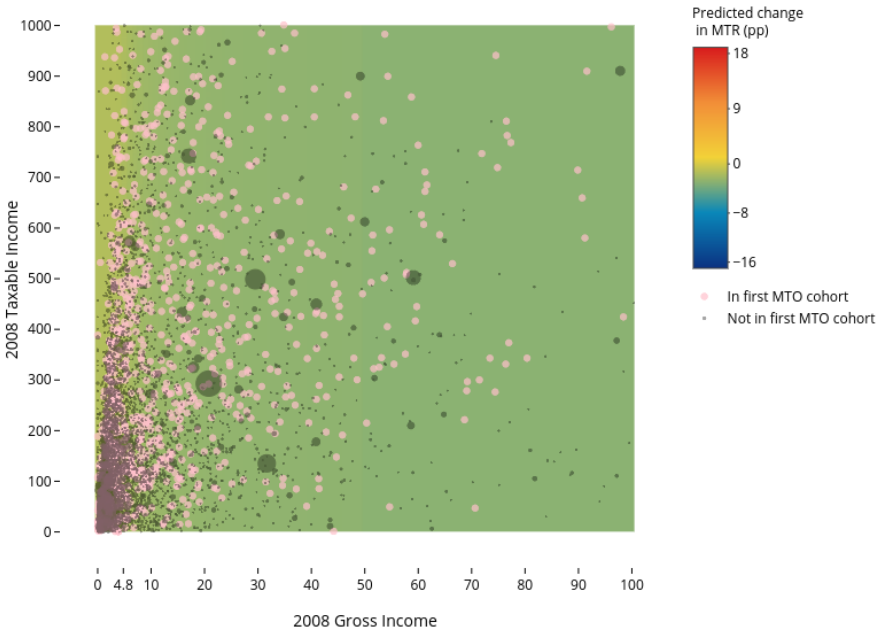
Notes: This table lists all 19 KPP Madya offices in Indonesia operating as of 2019, along with their respective oversight regions. Table A.9 and Figure A.4 show robustness results including the 5 MTOs created in 2005-2006. KPP Madya Jakarta Pusat could not be included because the data needed for MTO assignment as of 2004 (for tax years 2000-2002) are not available.

Figure A.6: Taxpayer density along MTR variation from 2009 Corporate Tax Rate Reform

Panel A: 2008-2009 schedule change



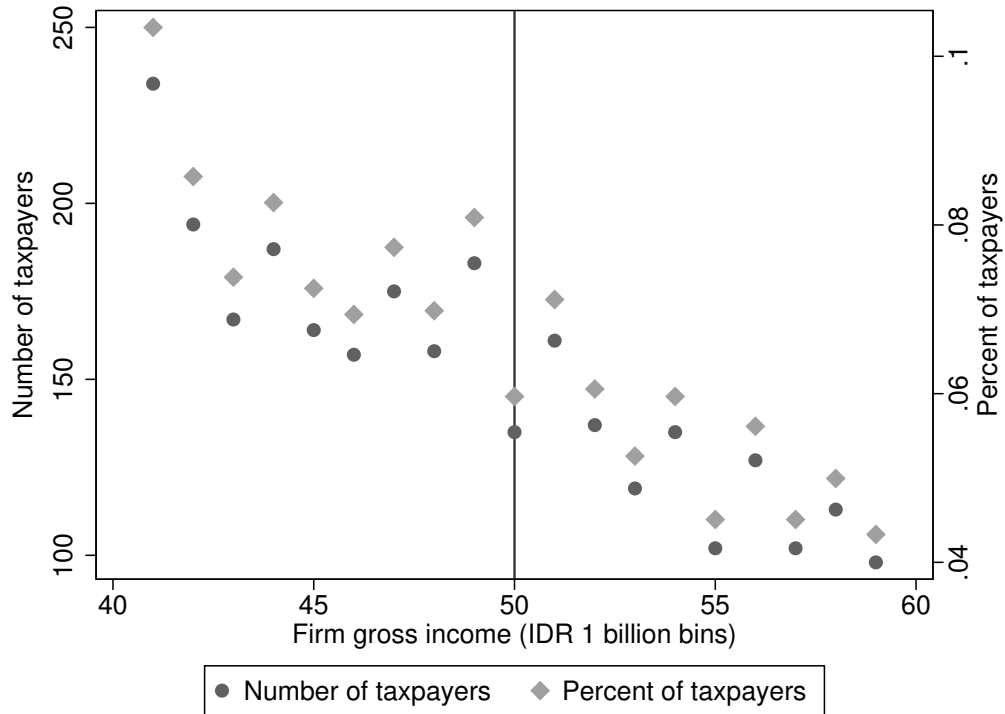
Panel B: 2009-2010 tax rate cut



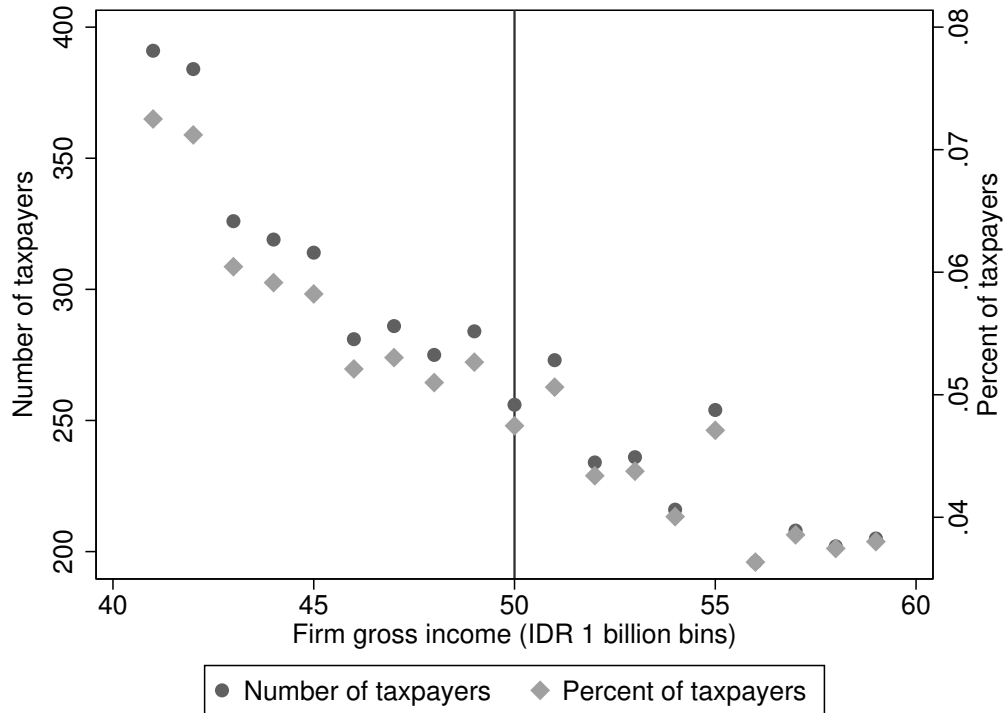
Notes: This figure displays the marginal tax rate change variation induced by Indonesia's 2009 tax rate reform within the ETI estimation analysis sample. Scatterplot markers are proportional to taxpayer-specific entropy balancing weights. See Section 5 for a detailed description of how predicted marginal tax rates are computed.

Figure A.7: Bunching at notch before and after MTR schedule reform

Panel A: After 2009 MTR schedule reform



Panel B: Before 2009 MTR schedule reform



Notes: This figure shows taxpayer density at the IDR 50 billion notch introduced by the 2009 corporate income tax schedule. The sample includes data for tax years 2003-2011 for all corporate taxpayers with non-zero taxable income.

Table A.3: Analysis sample restrictions

Criteria (1)	Total taxpayers (2)	Assigned to MTO in 2007 (3)	Not assigned to MTO in 2007 (4)
In eligible tax office as of pre-treatment year	101,829	4,272	97,557
Baseline gross income above IDR 100 million	60,600	4,181	56,419
2005 gross income and taxes paid within common support	20,858	1,479	19,379

Notes: This table shows taxpayer counts by treatment status following each analysis sample restriction. Eligible tax offices are the origin tax offices from which MTO taxpayers were selected according to the MTO creation regulations for the 13 KPP Madya offices created in 2007. Treatment status in Columns (3)-(4) are computed based on the tax office in which the taxpayer files any corporate income taxes over years 2007-2008. A treated (untreated) taxpayer is in the common support when its gross income and total taxes paid fall within the 2.5th and 97.5th percentiles of the respective distributions among untreated (treated) taxpayers. Table A.3 shows robustness results to including very small taxpayers (that is, no baseline gross income restriction), and to allowing increasing the common support cutoffs to 1st - 99th percentiles. MTO creation regulations are available in the Directorate General of Taxes website: <http://www.pajak.go.id/>, and they are: KEP-30-PJ-2007 (Balikpapan); KEP-25-PJ-2007 (Bandung); Nomor KEP-21-PJ-2007 (Jakarta Barat); KEP-22-PJ-2007 (Jakarta Selatan); KEP-23-PJ-2007 (Jakarta Timur); KEP-24-PJ-2007 (Jakarta Utara); KEP-31-PJ-2007 (Makassar); KEP-29-PJ-2007 (Malang); KEP-19-PJ-2007 (Medan); KEP-20-PJ-2007 (Palembang); KEP-26-PJ-2007 (Semarang); KEP-28-PJ-2007 (Sidoarjo); KEP-27-PJ-2007 (Surabaya).

Table A.4: First stage of MTO regression

Instrument:	Treatment: Taxpayer in MTO in current year (1)
(Assigned to MTO in 2007) x (Year > 2005)	0.647 (0.008)
F-statistic	6,412.0

Notes: This table shows first stage estimates for MTO treatment effect as defined in Equation 13. Standard errors are clustered at the taxpayer level.

Table A.5: Administrative Costs

	PTO	MTO
<i>Total budget (IDR billions)</i>		
Staff	525.9	51.2
Goods + Capital	376.8	19.3
Total	902.7	70.5
<i>Number of Corporate taxpayers</i>		
	341,620	15,047
<i>Cost per corporate taxpayer</i>		
	0.00132	0.00468

Notes: Budget data from 2015, deflated to 2007 IDR using Indonesia's GDP deflator. We assume half of all PTO (Primary Tax Office) costs are for corporate taxation.

Table A.6: Detailed effects of MTO on corporate income tax returns

(Figures in 2007 IDR billion)

	Weighted means			MTO effect	
	Pre-treatment		Treated post-treatment counterfactual	Point estimate (IV)	Clustered SE
	Untreated (1)	Treated (2)			
Gross income	13.03	13.03	10.97	9.131	(2.181) ***
- Cost of sales	10.37	10.17	8.45	7.636	(2.029) ***
- Other expenses	2.16	2.42	1.96	1.126	(0.229) ***
<i>Net income from business</i>	0.69	0.49	0.49	0.427	(0.160) ***
+ Net income from side business	0.04	0.01	-0.04	-0.009	(0.081)
<i>Total domestic commercial net income</i>	0.73	0.50	0.46	0.416	(0.144) ***
+ Total foreign commercial net income	0.00	0.00	0.00	0.004	(0.009)
<i>Total commercial net income</i>	0.73	0.50	0.47	0.404	(0.149) ***
- Non-taxable inc. and inc. subject to final tax	0.89	0.52	0.04	0.975	(0.473) **
+ Total positive fiscal adjustment	0.55	0.42	0.02	0.843	(0.448) *
- Total negative fiscal adjustment	0.03	0.03	0.21	-0.124	(0.121)
<i>Fiscal net income</i>	0.31	0.37	0.34	0.304	(0.092) ***
- Compensation for fiscal loss carried forward	0.02	0.03	0.04	-0.012	(0.020)
<i>Taxable Income</i>	0.39	0.46	0.47	0.238	(0.072) ***
<i>Total corporate income tax due</i>	0.09	0.12	0.12	0.065	(0.020) ***

Notes: See notes to Table 1.

Table A.7: Robustness to alternative standard error clustering levels

	Robustness to clustering		
	Main specification	Clustering at	Clustering at
		origin tax office	regional tax office
	(1)	(2)	(3)
Sample size	20,858	20,858	20,858
Treated sample size	1,479	1,479	1,479
<i>Panel A: Tax payments (2007 IDR billion)</i>			
Total tax payments	0.525 (0.096)	0.525 (0.094)	0.525 (0.097)
VAT	0.371 (0.078)	0.371 (0.077)	0.371 (0.080)
Corporate Income Tax	0.051 (0.013)	0.051 (0.012)	0.051 (0.014)
Other income taxes	0.087 (0.020)	0.087 (0.021)	0.087 (0.023)
<i>Panel B: Reported income (2007 IDR billion)</i>			
Gross income	9.131 (2.181)	9.131 (2.222)	9.131 (2.356)
Taxable Income	0.238 (0.072)	0.238 (0.070)	0.238 (0.054)
Total corporate income tax due	0.065 (0.020)	0.065 (0.019)	0.065 (0.015)
<i>Panel C: Employment</i>			
Total workers	12.646 (21.865)	12.646 (18.887)	12.646 (20.397)
Permanent workers	10.365 (6.009)	10.365 (5.917)	10.365 (4.293)
Temporary workers	2.281 (21.168)	2.281 (18.817)	2.281 (19.922)
Total wage bill (2007 IDR billion)	0.330 (0.139)	0.330 (0.124)	0.330 (0.122)
Permanent workers	0.193 (0.100)	0.193 (0.107)	0.193 (0.095)
Temporary workers	0.136 (0.097)	0.136 (0.083)	0.136 (0.086)

Notes: See notes to Table 1. This table shows MTO treatment effect robustness results to the levels at which standard errors are clustered.

Table A.8: Robustness to alternative weighting schemes

	Robustness to weighting method and matched years				
	Main			Entropy	IPW 2003-
	specification	No weights	IPW 2005	2003-2005	2005
	(1)	(2)	(3)	(4)	(5)
Sample size	20,858	60,354	20,650	11,372	11,259
Treated sample size	1,479	4,094	1,465	824	816
<i>Panel A: Tax payments (2007 IDR billion)</i>					
Total tax payments	0.525 (0.096)	1.551 (0.147)	1.115 (0.448)	0.579 (0.132)	0.685 (0.136)
VAT	0.371 (0.078)	0.712 (0.096)	0.838 (0.355)	0.428 (0.107)	0.497 (0.092)
Corporate Income Tax	0.051 (0.013)	0.557 (0.068)	0.036 (0.009)	0.053 (0.018)	0.024 (0.006)
Other income taxes	0.087 (0.020)	0.312 (0.033)	0.225 (0.094)	0.086 (0.025)	0.155 (0.050)
<i>Panel B: Reported income (2007 IDR billion)</i>					
Gross income	9.131 (2.181)	10.378 (2.695)	10.922 (3.133)	10.411 (2.905)	8.251 (1.893)
Taxable Income	0.238 (0.072)	1.782 (0.244)	0.483 (0.256)	0.255 (0.097)	0.178 (0.059)
Total corporate income tax due	0.065 (0.020)	0.480 (0.071)	0.131 (0.069)	0.073 (0.026)	0.049 (0.015)
<i>Panel C: Employment</i>					
Total workers	12.646 (21.865)	-36.102 (20.467)	33.016 (13.251)	19.730 (21.046)	50.192 (21.868)
Permanent workers	10.365 (6.009)	26.893 (7.201)	17.775 (4.777)	15.253 (7.230)	19.487 (6.568)
Temporary workers	2.281 (21.168)	-62.994 (19.105)	15.241 (12.723)	4.477 (20.091)	30.704 (22.639)
Total wage bill (2007)	0.330 (0.139)	-0.864 (0.516)	0.506 (0.109)	0.524 (0.169)	0.576 (0.146)
Permanent workers	0.193 (0.100)	0.297 (0.198)	0.442 (0.096)	0.238 (0.113)	0.414 (0.135)
Temporary workers	0.136 (0.097)	-1.162 (0.476)	0.064 (0.045)	0.286 (0.121)	0.162 (0.104)

Notes: See notes to Table 1. This table shows MTO treatment effect robustness results to alternative weighting schemes.

Table A.9: Robustness to alternative sample restrictions

	Main specification (1)	Robustness to sample restriction:		
		No gross income restriction (2)	1st-99th common support (3)	Adding 2005 and 2006 MTOs (4)
Sample size	20,858	24,683	38,017	26,828
Treated sample size	1,479	1,279	2,033	1,788
<i>Panel A: Tax payments (2007 IDR billion)</i>				
Total tax payments	0.525 (0.096)	0.448 (0.111)	0.263 (0.243)	0.327 (0.068)
VAT	0.371 (0.078)	0.331 (0.090)	0.163 (0.185)	0.231 (0.056)
Corporate Income Tax	0.051 (0.013)	0.028 (0.011)	0.033 (0.052)	0.031 (0.008)
Other income taxes	0.087 (0.020)	0.075 (0.022)	0.046 (0.055)	0.055 (0.013)
<i>Panel B: Reported income (2007 IDR billion)</i>				
Gross income	9.131 (2.181)	5.901 (2.144)	4.845 (2.808)	4.028 (1.198)
Taxable Income	0.238 (0.072)	0.143 (0.081)	0.121 (0.237)	0.144 (0.047)
Total corporate income tax due	0.065 (0.020)	0.041 (0.023)	0.042 (0.063)	0.035 (0.013)
<i>Panel C: Employment</i>				
Total workers	12.646 (21.865)	27.244 (17.353)	8.421 (29.254)	10.663 (15.368)
Permanent workers	10.365 (6.009)	16.377 (4.510)	6.290 (13.758)	11.873 (3.083)
Temporary workers	2.281 (21.168)	10.867 (16.981)	2.130 (23.599)	-1.210 (14.958)
Total wage bill (2007 IDR billion)	0.330 (0.139)	0.336 (0.119)	0.229 (0.303)	-0.176 (0.500)
Permanent workers	0.193 (0.100)	0.228 (0.077)	0.196 (0.258)	-0.276 (0.495)
Temporary workers	0.136 (0.097)	0.108 (0.096)	0.034 (0.122)	0.100 (0.066)

Notes: See notes to Table 1. This table shows MTO treatment effect robustness results to alternative sample restrictions.

Table A.10: Detailed effects of MTO on tax payments

(Figures in 2007 IDR billion)

	Weighted means			MTO effect	
	Pre-treatment		Treated post-treatment counterfactual	Point estimate (IV)	Clustered SE
	Untreated (1)	Treated (2)			
Total tax payments	0.371	0.371	0.351	0.525	(0.096) ***
<i>VAT</i>	0.263	0.259	0.233	0.371	(0.078) ***
Domestic	0.238	0.230	0.208	0.283	(0.059) ***
Imported	0.024	0.027	0.038	0.083	(0.048) *
Other	0.001	0.002	0.002	0.001	(0.002)
<i>Corporate Income Tax</i>	0.032	0.039	0.050	0.051	(0.013) ***
<i>Other income taxes</i>					
Employee income tax withholding	0.029	0.025	0.037	0.019	(0.008) **
Dividends and interest	0.013	0.014	0.008	0.019	(0.003) ***
Other	0.026	0.025	0.031	0.050	(0.016) ***

Notes: See notes to Table 1.

Table A.11: Robustness of ETI estimates

<i>Panel A: First Stage</i>												
	Unweighted regressions			Construct instrument using predicted gross income			No taxpayer fixed effect			Use 2008-2009 change only		
	Separate by MTO			Separate by MTO			Separate by MTO			Separate by MTO		
	All	MTO	Not MTO	All	MTO	Not MTO	All	MTO	Not MTO	All	MTO	Not MTO
	(1)	(2)	(3)	(4)	(5)	(6)	(7)	(8)	(9)	(10)	(11)	(12)
Endogenous:	0.985	0.978	0.986	0.916	0.893	0.934	0.962	0.955	0.969	0.955	0.948	0.966
$\Delta \text{Ln}(\text{Net-of-tax rate})$	(0.003)	(0.014)	(0.003)	(0.016)	(0.035)	(0.013)	(0.008)	(0.016)	(0.007)	(0.009)	(0.019)	(0.008)
F-statistic	56,315	1,797	56,068	1,149	218	2,015	4,813	1,223	8,109	4,792	1,090	9,185
<i>Panel B: IV (ETI estimates)</i>												
Outcome:	0.661	1.027	0.652	0.587	0.343	0.785	0.964	1.411	0.668	0.951	1.364	0.607
$\Delta \text{Ln}(\text{Taxable Income})$	(0.073)	(0.417)	(0.074)	(0.206)	(0.397)	(0.224)	(0.265)	(0.585)	(0.260)	(0.320)	(0.751)	(0.345)
P-value of difference	0.375			0.331			0.237			0.348		
Year FE	Yes	Yes	Yes	Yes	Yes	Yes	Yes	Yes	Yes	No	No	No
Taxpayer FE	Yes	Yes	Yes	Yes	Yes	Yes	No	No	No	No	No	No
Sector FE	No	No	No	No	No	No	Yes	Yes	Yes	Yes	Yes	Yes
MTO dummy	No	No	No	No	No	No	Yes	Yes	Yes	Yes	Yes	Yes

Notes: See notes to Table 3. Columns (4)-(6) show results where the instrument (predicted change in log net-of-tax rate) is defined as $\ln\left(\frac{1-\tau_{t+1}^P}{1-\tau_t}\right)$, where the predicted marginal tax rate τ_{t+1}^P is constructed by applying year $t+1$'s schedule to the taxpayer's predicted gross income for year $t+1$, with the prediction based on each taxpayer's 2004-2008 gross income growth trend, and $1-\tau_t$ is the actual net-of-tax rate for year t .

A Data Appendix

Corporate Income Tax: Form SPT 1771

Taxpayers file SPT 1771 forms at the headquarter level, reporting aggregate income across all branches. The corporate income tax filing microdata includes all non-identified line items from Form SPT 1771, and are tracked over time under consistent variable names.³³

Each observation in the dataset is a taxpayer filing for a particular tax year at a particular date. The variables in the SPT 1771 microdata contain each line item from the main form (SPT 1771) and its Annex I (SPT 1771-I). In particular, it includes each component of the major corporate income tax line items, such as net income (gross income - cost of sales - other expenses), fiscal net income (net income +/- fiscal adjustments), and taxable income (fiscal net income - compensation for fiscal loss carried forward).

Finally, SPT 1771 microdata includes the tax office code under which the corporate income tax form was filed, and an indicator for whether the filing is an correction filing or an original filing. We use the tax office code under which SPT 1771 was filed to define whether the taxpayer has been assigned to MTO or not, and the correction indicator to construct variables tracking correction filing timing and content.

Employee Income Tax Withholding: Form SPT 1721

Firms are required to report the amount of personal income tax withheld from employees' paychecks on a monthly basis through Form SPT Masa 1721. The SPT 1721 microdata consists of two datasets, one covering tax years 2002-2008, and the other covering tax years 2009-2013. The split reflects a major change in form SPT 1721 that produced finer reporting by different employee categories. Because only very few observations are available for tax year 2008 (the last year under the old form), we exclude SPT 1721 records for tax year 2008 from all analyses.

Each observation in the 2002-2008 dataset is a branch-level year-end reporting of cumulative income tax withholdings, reported at the branch level. The 2009-2013 data is further disaggregated by month, with cumulative totals for the year reported in the month of December. In terms of variables, the information consistently reported in both datasets includes: number of employees, wage bill, and individual income tax withheld. These data

³³The forms SPT 1771 and SPT 1771-I have also remained largely unchanged over the analysis period, and are available at http://www.pajak.go.id/sites/default/files/formulir_pajak/Formulir%20SPT%201771-%24.pdf.

are also separately by two groups of employees: permanent and/or pensioner employees, and temporary employees.³⁴

We combine the two datasets to construct a taxpayer-level annual panel dataset consistent time series for each taxpayer. Within each dataset, we aggregate the branch-level data to the taxpayer level. As the 2002-2008 data are reported in year-end totals, we use the year-end total reported in the December monthly filing for the 2009-2013 data.

Tax Payments

Detailed tax payments data are from the Treasurer’s Modul Penerimaan Negara (MPN; State Revenues Module) database, and cover all types of income tax and VAT paid by corporations.

Each observation in the tax payments data is a branch-level payment made on a particular date for a particular tax type and month. The tax type variable differentiates different types of income and VAT. We break taxes down by the following major categories: corporate income taxes, VAT, and other income taxes.³⁵

Tax Audits, Assessments, and Disputes

DGT may conduct a tax audit of any or all of a taxpayer’s filings and payments. At the end of every audit, DGT issues a tax assessment letter and/or a tax collection letter to the taxpayer. The tax assessment letter informs the taxpayer of outstanding tax obligations (none, underpaid, overpaid), while the tax collection letter is typically used to levy administrative tax sanctions resulting from the audit.³⁶ Our tax audit microdata consists of two datasets covering this audit process.

The first dataset covers all audits since 2009, and documents what was audited and why (that is, the audit triggers). Each observation in this dataset is an audit occurrence, and it includes the following main variables: the taxpayer anonymized ID, the audit date, the

³⁴Number of employees at year-end in the 2002-2008 data and in the 2009-2013 data reflect the total of unique employees employed during the respective tax year. While the 2009-2013 data distinguishes between permanent vs pensioner employees, the 2002-2008 data does not. As a result, we sum the 2009-2013 employee numbers to construct a consistent series of permanent and/or pensioner employment.

³⁵These categories are sub-divided in the data by tax articles. For income taxes: PPh Pasal 25/29 (corporate income tax), PPh Pasal 21 (domestic employee withholding), PPh Pasal 26 (foreign employee withholding), PPh Pasal 23 (income tax on import transactions), PPh 23 (income tax on dividends and interest), and PPh Final or Pasal 4 (2) (income tax withholding on gross payments of certain items). For VAT: PPn Domestic, PPn Import, and PPn Other.

³⁶For a more detailed description of Indonesia’s tax audit and assessment process, see, for example, <https://www.pwc.com/id/en/pocket-tax-book/english/pocket-tax-book-2019.pdf>.

object audited (e.g. CIT, VAT, location changes), the tax period audited (e.g. a particular month or range of months), and the audit trigger (e.g. risk analysis, office routine, etc.).

The second dataset is specific to VAT audits, and covers the audit result process for all audits since 2002. Each observation in this dataset is either the issuance of a tax collection letter or of a VAT underpayment tax assessment letter. The available variables are: the taxpayer anonymized ID; the issuance type (collection or underpayment assessment) and date; and the total underpaid amount (or administrative penalty) found in the audit.

In addition, because either a tax collection letter or an underpayment letter is a legal instrument with which DGT may confiscate the owed amount/levied penalties, this dataset further includes as variables the issuance dates of all subsequent letters exchanged between DGT and the taxpayer during the tax dispute process. Specifically, these are: a warning letter (issued if the amount/penalty is not paid by its deadline), a distress warrant (issued if the underpaid tax is not settled within 21 days of the warning letter), and a confiscation letter (issued if the underpaid amount is not settled within 48 hours of the distress warrant).

Finally, because by Law taxpayers are only required to pay the amount of taxes they agree to have underpaid (so long as the amount to which the taxpayer disagrees is formally disputed through an objection letter), the data further includes: the amount of taxes the taxpayer disagrees to have underpaid; the date in which the taxpayer filed an objection letter concerning the disagreed amount; and lastly, in case the objection is denied, the date in which the taxpayer filed an appeal to the Tax Court requesting further review of the case.

Tax Office staffing

We compute staff descriptive statistics for MTO and PTO offices using anonymized staff-level panel data provided by DGT. These data include basic staff demographic characteristics, as well as information on staff position (i.e., auditor or AR) at different points in time. Information on staff position and years of experience are then matched with position-specific and experience-specific wage schedules to compute average salary statistics.

Sample Restrictions for Matching

When constructing our analysis sample and computing balancing weights, we attempt to mimic the MTO assignment process conducted by DGT as close as possible. Appendix Table A.3 outlines each sample restriction step. First, we focus on taxpayers who were registered as of 2006 in a tax office from which MTO taxpayers were sourced (that is, in an “eligible”

tax office for MTO selection). The list of tax offices from which MTO taxpayers were sourced can be obtained separately for each MTO from its creation regulation.³⁷ This brings us to 101,829 corporate taxpayers registered in an eligible tax office as of 2006, of which 4,272 were assigned to MTO in 2007.

Second, a large number of the taxpayers registered in eligible tax offices are small microbusinesses that would not have been shortlisted for MTO assignment. We therefore exclude taxpayers with gross income below IDR 100 million (roughly USD 10,000 at the 2007 exchange rate) during baseline years 2003-2005, bringing the shortlisted sample to 60,600 taxpayers, 4,181 of which were assigned to MTO in 2007.

Finally, as recommended in the propensity score and matching literature (Dehejia and Wahba, 1999; Heckman et al., 1997; Stuart, 2010), we focus on taxpayers whose baseline MTO assignment inputs share common support. We define common support based on the 2.5th and 97.5th percentiles of each MTO assignment input. For example, in our main specification the matched variables are the 2005 gross income and the 2005 total taxes paid. The treated (untreated) taxpayers in the common support are those whose 2005 gross income and total taxes paid fall within the 2.5th and 97.5th percentiles of the 2005 gross income and total taxes paid distributions of the untreated (treated) taxpayers.

With this final restriction in place, we arrive at our analysis sample of 20,858 taxpayers, 1,479 of which are assigned to MTO. Appendix Table A.9 presents robustness results to the gross income and common support restrictions.

³⁷In particular, each regulation lists in an attachment all the NPWPs (Tax IDs) assigned to its respective newly created MTO. NPWPs are composed of 15 digits. The first 9 digits uniquely identify the firm, the next three identify the tax office in which the NPWP is registered, and the last 3 identify the branch (e.g. 000 indicates headquarters). While we cannot directly match these IDs to our data as our data are anonymized, we can extract from each NPWP in the regulation the origin tax office from which it came as the NPWP's middle 10th-12th digits.