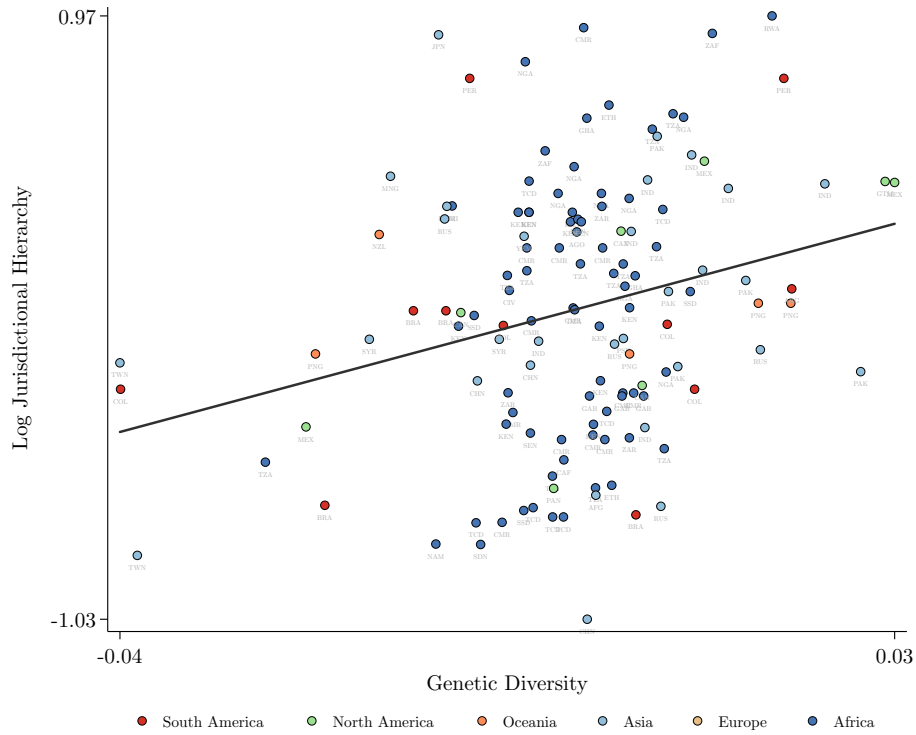
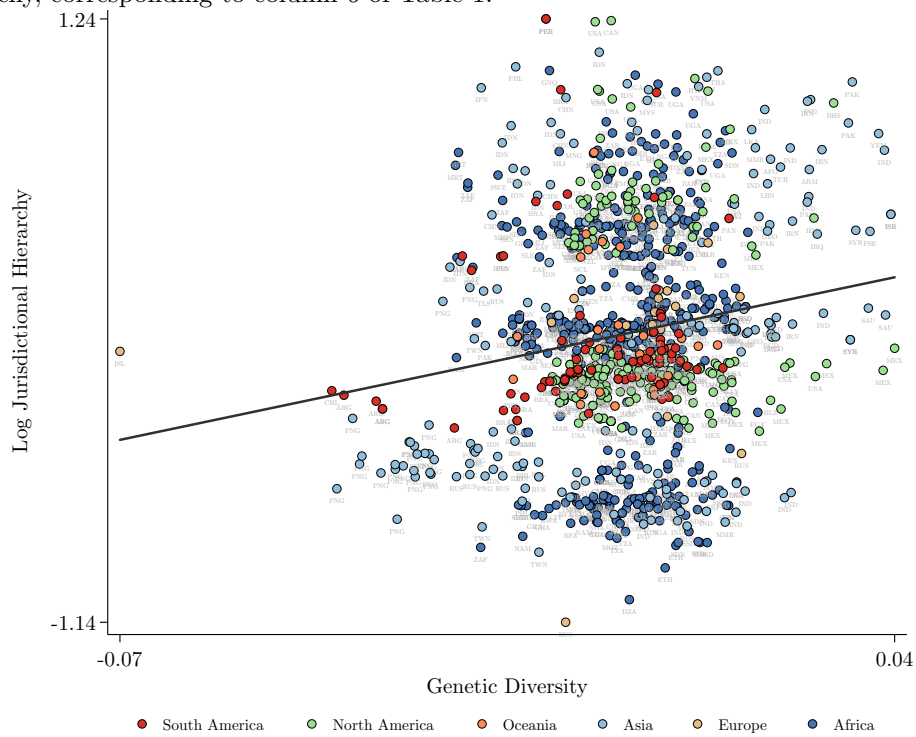


Online Appendix  
Not For Publication

# A Additional Figures

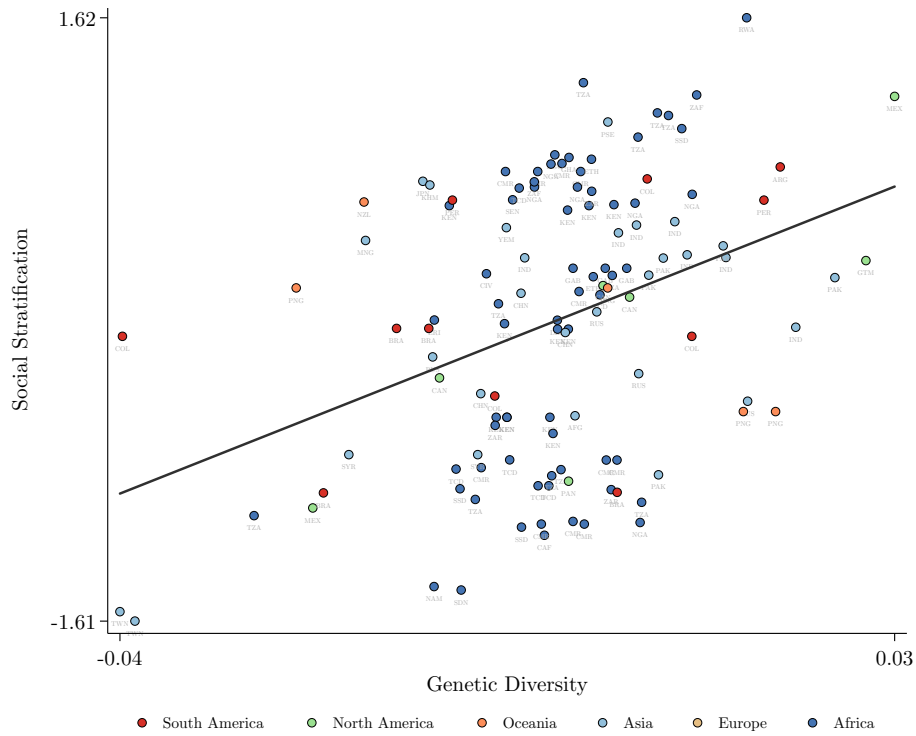


Panel A: The conditional association between genetic diversity and jurisdictional hierarchy, corresponding to column 6 of Table 1.

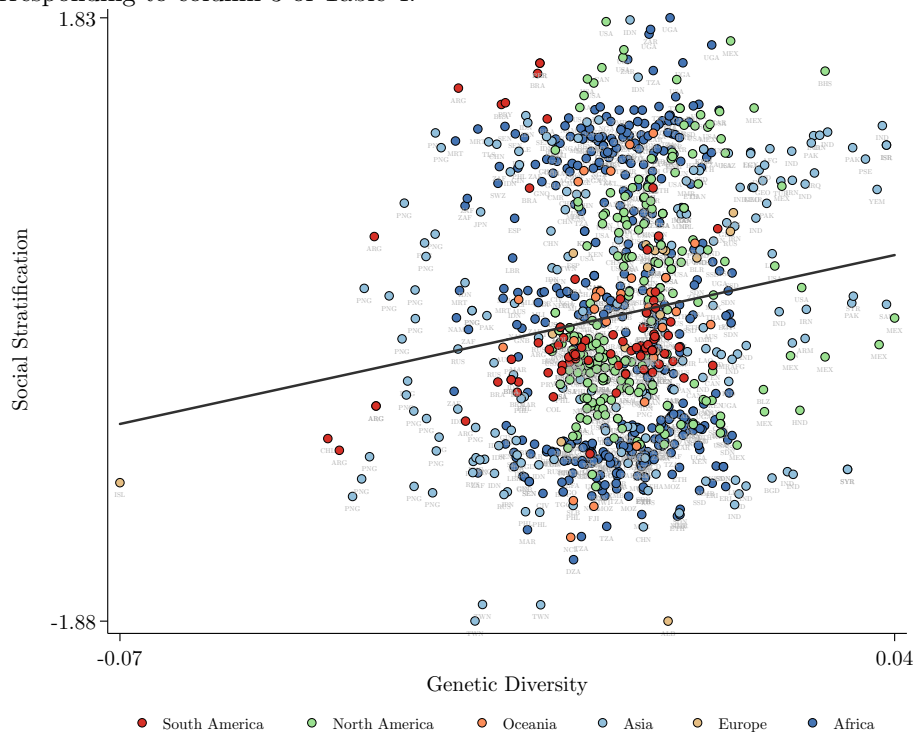


Panel B: The conditional effect of predicted genetic diversity on jurisdictional hierarchy, corresponding to column 6 of Table 3.

Figure A.1: Genetic diversity and jurisdictional hierarchy: Added variable plots.



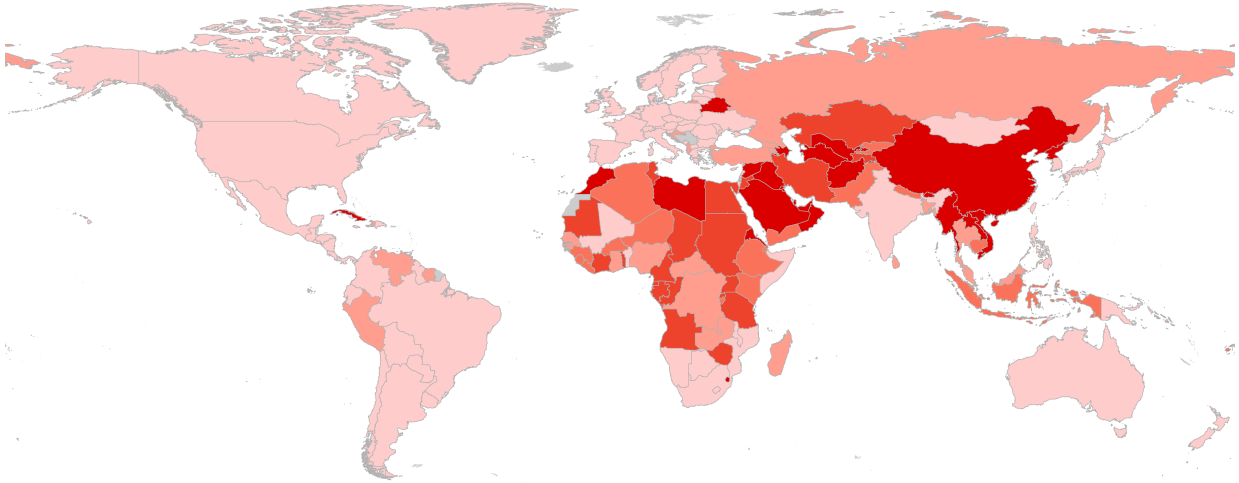
Panel A: The conditional association between genetic diversity and social stratification, corresponding to column 3 of Table 4.



Panel B: The conditional effect of predicted genetic diversity on social stratification, corresponding to column 3 of Table 6.

Figure A.2: Genetic diversity and social stratification: Added variable plots.

Panel A: Intensity of Autocracy



Panel B: Income per Capita

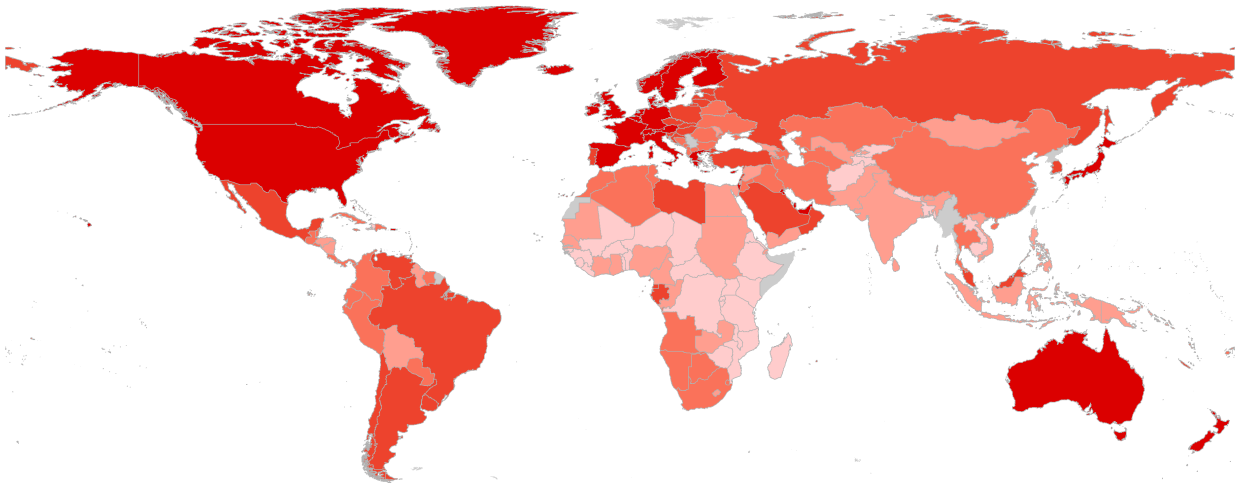


Figure A.3: The association between political institutions and economic development. Panel A: Intensity of autocracy across the globe (1994–2013). Panel B: Income per capita across the globe (1994–2011).

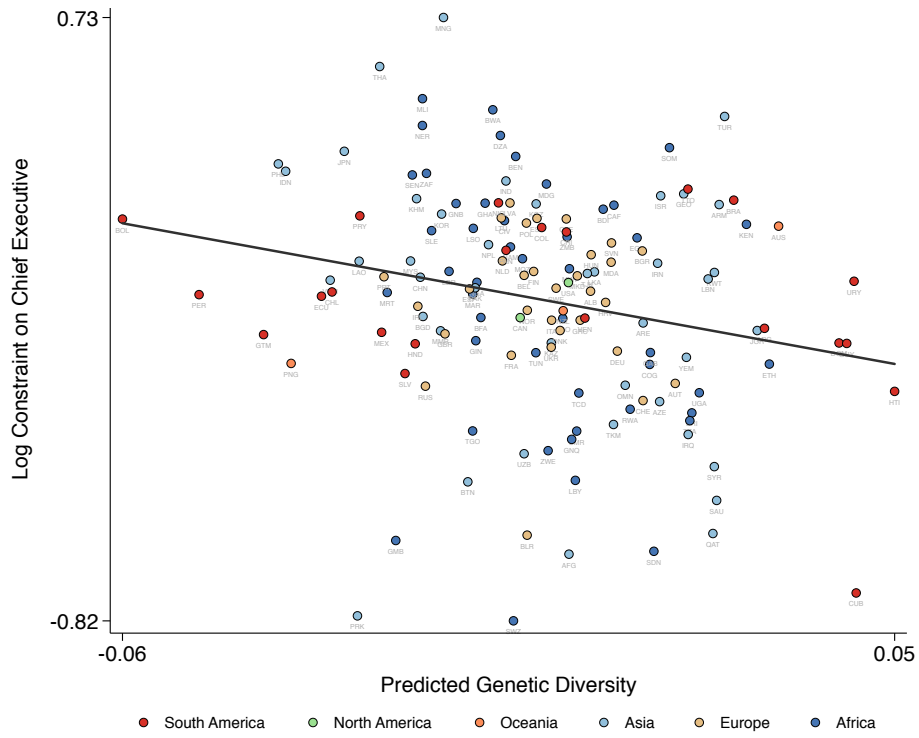


Figure A.4: The conditional effect of predicted genetic diversity and constraint on the executive, corresponding to column 3 of Table 12.

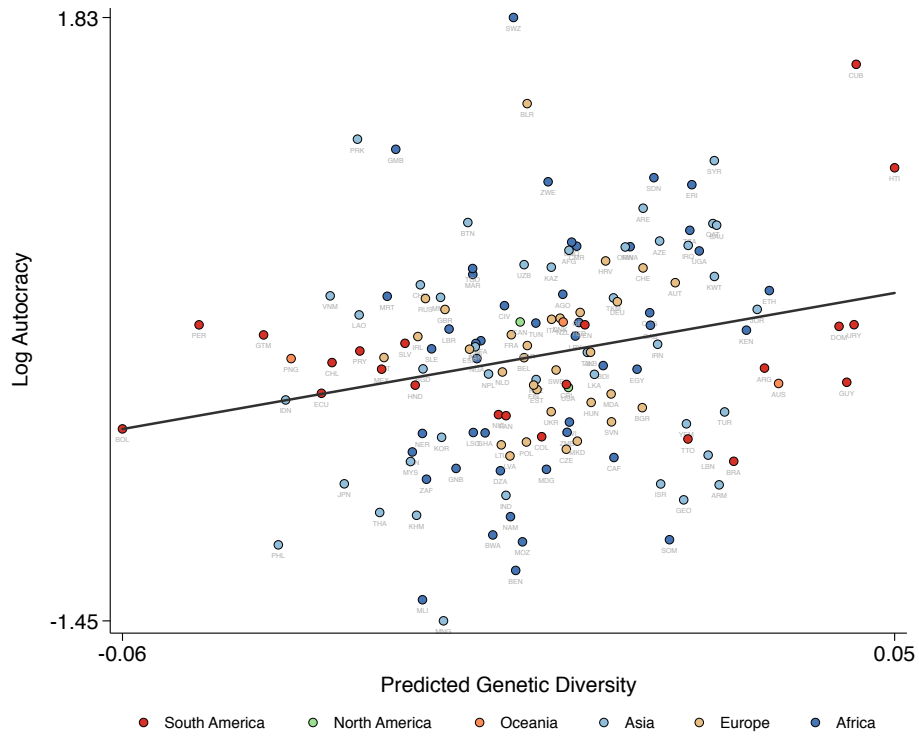


Figure A.5: The conditional effect of predicted genetic diversity on autocracy, corresponding to column 7 of Table 14.

## B Additional Tables

Table B.1: Summary Statistics

	Average	S.D.	Min.	Max.	N
SUMMARY STATISTICS FOR THE PRE-COLONIAL ETHNIC-GROUP DATA					
Log Levels of Jurisdictional Hierarchy	0.51	0.51	0.00	1.61	1147
Social Stratification	0.79	0.86	0.00	2.00	1102
Intensity of Slavery	0.73	0.78	0.00	2.00	1113
Degree of Absence of Checks on Leader's Power	1.17	0.84	0.00	3.00	86
Difficulty of Removal of Leaders	1.29	0.98	0.00	3.00	77
Leader's Exercise of Authority	0.85	0.83	0.00	2.00	87
Degree of Lack of Community Decisions	0.87	0.80	0.00	2.00	90
Perception of Leader's Power	0.86	0.82	0.00	2.00	90
Log Intensity of Indigenous Autocracy	0.94	0.35	0.00	1.10	923
Log Indigenous Autocracy (Ancestry Adjusted)	0.83	0.24	0.00	1.10	1177
Indigenous Democracy	0.33	0.34	0.00	1.00	1188
Indigenous Democracy (Ancestry Adjusted)	0.32	0.31	0.00	1.00	1188
Log Indigenous Autocracy	0.94	0.18	0.00	1.10	1180
Area	8.05	45.20	0.00	1327.70	1097
Observed Genetic Diversity	0.73	0.05	0.58	0.77	145
Predicted Genetic Diversity	0.71	0.04	0.59	0.77	1263
Elevation	635.73	731.65	-2342.33	4527.95	1263
River Length	2.90	17.24	0.00	490.54	1097
River Density	0.81	5.04	0.00	108.87	1097
Share Desert	0.11	0.26	0.00	1.00	1097
Average Temperature	19.88	8.40	-18.91	29.54	1253
Temperature Range	11.67	2.83	4.57	19.38	1253
Any diversity (FAO)	0.91	0.29	0.00	1.00	1097
Ecological diversity (FAO classes)	0.42	0.25	0.00	0.84	1097
Year in Ethnographic Atlas	1895.64	154.70	-800.00	2000.00	1275
Terrain Ruggedness	1.2e+05	1.3e+05	0.00	1.0e+06	1263
SUMMARY STATISTICS FOR THE MODERN-COUNTRY DATA					
Log Constraint on Chief Executive	1.68	0.40	0.69	2.08	147
Log Autocracy	0.78	0.83	0.00	2.40	147
Log Democracy	1.53	0.88	0.00	2.40	147
Predicted Genetic Diversity	0.73	0.03	0.63	0.77	150
Log Absolute Latitude	2.96	0.96	0.00	4.17	154
Soil Fertility	0.57	0.20	0.00	0.96	154
Roughness	0.18	0.14	0.01	0.60	154
Elevation	0.56	0.49	0.02	2.67	154
Average Distance to Nearest Waterway	0.34	0.45	0.01	2.39	154
Percentage of Arable Land	15.13	13.80	0.04	62.10	154
Temperature	18.09	8.49	-7.93	28.64	154
Africa dummy	0.31	0.46	0.00	1.00	154
Asia dummy	0.27	0.45	0.00	1.00	154
Europe dummy	0.23	0.42	0.00	1.00	154
Oceania dummy	0.02	0.14	0.00	1.00	154
Latin America and Caribbean region dummy	0.16	0.36	0.00	1.00	154
Sub-Saharan Africa region dummy	0.27	0.45	0.00	1.00	154
British legal origin dummy	0.26	0.44	0.00	1.00	154
French legal origin dummy	0.45	0.50	0.00	1.00	154
Socialist legal origin dummy	0.22	0.42	0.00	1.00	154
German legal origin dummy	0.03	0.18	0.00	1.00	154
Scandinavian legal origin dummy	0.03	0.18	0.00	1.00	154
Colony	0.64	0.48	0.00	1.00	153

Table B.2: Predicted Diversity and Jurisdictional Hierarchy — Omitted Variables and Bootstrapped Standard Errors

	Log Number of Levels of Jurisdictional Hierarchy					
	(1)	(2)	(3)	(4)	(5)	(6)
Predicted Genetic Diversity	5.121*** (0.293)	5.771*** (0.320)	5.838*** (0.317)	5.496*** (1.010)	5.732*** (1.097)	5.949*** (1.106)
Log Absolute Latitude		0.068*** (0.013)	0.080*** (0.014)	0.110*** (0.018)	0.109*** (0.019)	0.130*** (0.021)
Elevation					0.000 (0.000)	0.000** (0.000)
Terrain Ruggedness					-0.000* (0.000)	-0.000*** (0.000)
River Length					0.003** (0.001)	0.003*** (0.001)
River Density					-0.003 (0.002)	-0.002 (0.002)
Share Desert					0.011 (0.062)	0.019 (0.072)
Average Temperature						0.007* (0.004)
Temperature Range						-0.020** (0.008)
Soil Quality (Climatic)	No	No	Yes	Yes	Yes	Yes
Continental FE	No	No	No	Yes	Yes	Yes
Bootstrapped Standard Error	(0.656)***	(0.738)***	(0.735)***	(1.359)***	(1.439)***	(1.412)***
Altonji, Elder and Taber (2005) / Bellows and Miguel (2009)					-20.897	-12.120
Oster (2014) bias-adjusted $\beta$					6.877	7.565
Adjusted $R^2$	0.199	0.217	0.225	0.290	0.297	0.300
$N$	1,076	1,076	1,076	1,076	1,076	1,076

This table presents the results of a series of OLS regression analyses, on the ethnic-group level, of a measure of pre-colonial jurisdictional hierarchy (the natural logarithm of the number of levels of jurisdictional hierarchy) on predicted genetic diversity, based on the migratory distance from East Africa to the interior centroid of the homeland of the ethnicity, conditional on a range of control variables at the ethnic-group level. The table includes bootstrapped standard errors that account for the uncertainty in the first stage of the prediction of genetic diversity based on the migratory distance from East Africa. Furthermore, the table includes omitted variable statistics. Specifications marked with “Continental FE” accounts for sub-Saharan Africa, Latin America, and continental fixed effects. Heteroscedasticity-consistent standard errors are reported in parentheses. \*\*\* Significant at the 1 percent level. \*\* Significant at the 5 percent level. \* Significant at the 10 percent level.



Table B.3: Predicted Diversity and Autocratic Institutions — Omitted Variables and Bootstrapped Standard Errors

	Degree of Absence of Checks on Leader's Power		Difficulty of Removal of Leaders		Leader's Exercise of Authority		Degree of Lack of Community Decisions		Perception of Leader's Power	
	(1)	(2)	(3)	(4)	(5)	(6)	(7)	(8)	(9)	(10)
Predicted Genetic Diversity	6.317*** (2.101)	5.042** (2.306)	7.374*** (2.222)	5.858** (2.236)	6.048*** (1.895)	5.489*** (1.984)	6.589*** (1.514)	6.023*** (1.679)	5.529*** (1.753)	5.504** (2.094)
Log Absolute Latitude	0.035 (0.099)	-0.080 (0.189)	0.143 (0.092)	0.111 (0.148)	-0.053 (0.091)	-0.030 (0.173)	-0.100 (0.069)	-0.044 (0.120)	0.026 (0.087)	0.090 (0.144)
Elevation		-0.000 (0.000)		-0.000 (0.000)		-0.000 (0.000)		0.000 (0.000)		0.000 (0.000)
Terrain Ruggedness		0.000* (0.000)		0.000** (0.000)		0.000 (0.000)		0.000 (0.000)		-0.000 (0.000)
River Length		0.013 (0.009)		-0.000 (0.010)		0.008 (0.007)		0.001 (0.007)		0.014* (0.007)
River Density		-0.061 (0.050)		-0.031 (0.040)		-0.044 (0.033)		-0.016 (0.041)		-0.043 (0.033)
Share Desert		0.235 (0.533)		0.157 (0.613)		-0.561 (0.543)		0.072 (0.479)		0.125 (0.473)
Average Temperature		-0.003 (0.020)		0.014 (0.021)		0.020 (0.019)		0.015 (0.015)		0.011 (0.017)
Temperature Range		0.091 (0.068)		0.087 (0.067)		0.061 (0.063)		-0.013 (0.049)		-0.047 (0.054)
Soil Quality (Climatic)	Yes	Yes	Yes	Yes	Yes	Yes	Yes	Yes	Yes	Yes
Bootstrapped standard error	(2.423)***	(2.627)**	(2.548)***	(2.485)**	(2.244)***	(2.411)**	(1.672)***	(1.809)***	(2.065)***	(2.197)**
Altonji, Elder and Taber (2005) / Bellows and Miguel (2009)		3.955		3.863		9.819		10.638		221.800
Oster (2014) bias-adjusted $\beta$		4.013		4.762		4.734		4.015		5.426
Adjusted $R^2$	0.067	0.111	0.079	0.168	0.121	0.109	0.198	0.146	0.164	0.108
$N$	78	78	71	71	79	79	82	82	82	82

This table presents the results of a series of OLS regression analyses, on the ethnic-group level, of measures of pre-colonial autocracy on predicted genetic diversity, based on the migratory distance from East Africa to the interior centroid of the homeland of the ethnicity, conditional on a range of control variables at the ethnic-group level. The table includes bootstrapped standard errors that account for the uncertainty in the first stage of the prediction of genetic diversity based on the migratory distance from East Africa. Furthermore, the table includes omitted variable statistics. Heteroscedasticity-consistent standard errors are reported in parentheses. \*\*\* Significant at the 1 percent level. \*\* Significant at the 5 percent level. \* Significant at the 10 percent level.

Table B.4: Diversity and Jurisdictional Hierarchy — Ordered Probit

	Number of Levels of Jurisdictional Hierarchy					
	(1)	(2)	(3)	(4)	(5)	(6)
Genetic Diversity	5.195** (2.436)	10.143*** (3.139)	12.350*** (3.022)	29.074*** (8.399)	33.998*** (10.047)	31.789*** (9.652)
Log Absolute Latitude		0.379*** (0.089)	0.443*** (0.101)	0.304*** (0.099)	0.268** (0.114)	0.333** (0.130)
Elevation					-0.000 (0.000)	0.000 (0.000)
Terrain Ruggedness					0.000 (0.000)	0.000 (0.000)
River Length					0.006*** (0.003)	0.022* (0.013)
River Density					-0.170 (0.109)	-0.066 (0.106)
Share Desert					-0.711 (0.659)	-1.385** (0.661)
Average Temperature						0.081* (0.042)
Temperature Range						0.031 (0.063)
Soil Quality (Climatic)	No	No	Yes	Yes	Yes	Yes
Continental FE	No	No	No	Yes	Yes	Yes
<i>N</i>	131	131	131	131	131	131

This table presents the results of a series of ordered probit regression analyses, on the ethnic-group level, of a measure of pre-colonial jurisdictional hierarchy (the number of levels of jurisdictional hierarchy) on observed genetic diversity, conditional on a range of control variables at the ethnic-group level. Specifications marked with “Continental FE” accounts for sub-Saharan Africa, Latin America, and continental fixed effects. Heteroscedasticity-consistent standard errors are reported in parentheses. \*\*\* Significant at the 1 percent level. \*\* Significant at the 5 percent level. \* Significant at the 10 percent level.

Table B.5: Predicted Diversity and Jurisdictional Hierarchy — Ordered Probit

	Log Number of Levels of Jurisdictional Hierarchy					
	(1)	(2)	(3)	(4)	(5)	(6)
Predicted Genetic Diversity	12.672*** (0.968)	15.294*** (1.285)	15.774*** (1.274)	12.562*** (2.626)	13.713*** (2.987)	14.761*** (3.062)
Log Absolute Latitude		0.208*** (0.039)	0.245*** (0.041)	0.278*** (0.049)	0.269*** (0.052)	0.341*** (0.062)
Elevation					0.000 (0.000)	0.000** (0.000)
Terrain Ruggedness					-0.000 (0.000)	-0.000** (0.000)
River Length					0.017*** (0.005)	0.020*** (0.005)
River Density					-0.013* (0.007)	-0.013* (0.007)
Share Desert					-0.003 (0.187)	-0.004 (0.207)
Average Temperature						0.024** (0.011)
Temperature Range						-0.062*** (0.022)
Soil Quality (Climatic)	No	No	Yes	Yes	Yes	Yes
Continental FE	No	No	No	Yes	Yes	Yes
<i>N</i>	1,076	1,076	1,076	1,076	1,076	1,076

This table presents the results of a series of ordered probit regression analyses, on the ethnic-group level, of a measure of pre-colonial jurisdictional hierarchy (the number of levels of jurisdictional hierarchy) on predicted genetic diversity, based on the migratory distance from East Africa to the interior centroid of the homeland of the ethnicity, conditional on a range of control variables at the ethnic-group level. Specifications marked with “Continental FE” accounts for sub-Saharan Africa, Latin America, and continental fixed effects. Heteroscedasticity-consistent standard errors are reported in parentheses. \*\*\* Significant at the 1 percent level. \*\* Significant at the 5 percent level. \* Significant at the 10 percent level.

Table B.6: Jurisdictional Hierarchy and Autocratic Institutions — Ordered Probit

	Degree of Absence of Checks on Leader's Power		Difficulty of Removal of Leaders		Leader's Exercise of Authority		Degree of Lack of Community Decisions		Perception of Leader's Power	
	(1)	(2)	(3)	(4)	(5)	(6)	(7)	(8)	(9)	(10)
Log Levels of Jurisdictional Hierarchy	1.417*** (0.268)	1.307*** (0.295)	1.315*** (0.309)	1.279*** (0.324)	1.755*** (0.307)	1.793*** (0.325)	1.820*** (0.308)	1.927*** (0.347)	1.653*** (0.301)	1.612*** (0.313)
Log Absolute Latitude	-0.044 (0.125)	-0.205 (0.239)	0.061 (0.119)	0.068 (0.200)	-0.250* (0.138)	-0.097 (0.227)	-0.369*** (0.127)	-0.262 (0.215)	-0.063 (0.137)	0.068 (0.193)
Elevation		-0.000 (0.001)		-0.000 (0.000)		-0.000 (0.001)		0.000 (0.000)		0.001 (0.000)
Terrain Ruggedness		0.000* (0.000)		0.000** (0.000)		0.000 (0.000)		0.000 (0.000)		-0.000 (0.000)
River Length		0.011 (0.011)		-0.011 (0.013)		-0.001 (0.009)		-0.015 (0.013)		0.038 (0.033)
River Density		-0.059 (0.106)		-0.056 (0.110)		-0.009 (0.077)		0.074 (0.065)		-0.058 (0.094)
Share Desert		0.591 (0.737)		0.588 (0.791)		-1.274 (0.866)		0.296 (0.767)		0.574 (0.811)
Average Temperature		-0.006 (0.027)		0.021 (0.025)		0.043 (0.029)		0.024 (0.024)		0.013 (0.026)
Temperature Range		0.144 (0.096)		0.109 (0.095)		0.077 (0.110)		-0.053 (0.098)		-0.130 (0.084)
Soil Quality (Climatic)	Yes	Yes	Yes	Yes	Yes	Yes	Yes	Yes	Yes	Yes
<i>N</i>	78	78	71	71	79	79	82	82	82	82

This table presents the results of a series of ordered probit regression analyses, on the ethnic-group level, of measures of pre-colonial autocracy on a measure of pre-colonial jurisdictional hierarchy (the natural logarithm of the number of levels of jurisdictional hierarchy), conditional on a range of control variables at the ethnic-group level. Heteroscedasticity-consistent standard errors are reported in parentheses. \*\*\* Significant at the 1 percent level. \*\* Significant at the 5 percent level. \* Significant at the 10 percent level.

Table B.7: Predicted Diversity and Autocratic Institutions — Ordered Probit

	Degree of Absence of Checks on Leader's Power		Difficulty of Removal of Leaders		Leader's Exercise of Authority		Degree of Lack of Community Decisions		Perception of Leader's Power	
	(1)	(2)	(3)	(4)	(5)	(6)	(7)	(8)	(9)	(10)
Predicted Genetic Diversity	9.682*** (3.164)	8.573** (3.704)	9.660*** (2.860)	8.775*** (2.998)	10.106*** (3.345)	9.975*** (3.406)	12.557*** (3.084)	11.804*** (3.161)	10.392*** (3.412)	10.319*** (3.768)
Log Absolute Latitude	0.062 (0.141)	-0.124 (0.268)	0.173 (0.116)	0.119 (0.194)	-0.085 (0.139)	-0.032 (0.253)	-0.218* (0.127)	-0.128 (0.208)	0.049 (0.137)	0.117 (0.202)
Elevation		-0.000 (0.001)		-0.001 (0.000)		-0.000 (0.001)		0.000 (0.000)		0.000 (0.000)
Terrain Ruggedness		0.000** (0.000)		0.000*** (0.000)		0.000* (0.000)		0.000 (0.000)		-0.000 (0.000)
River Length		0.021* (0.012)		0.001 (0.013)		0.015 (0.010)		0.001 (0.010)		0.066* (0.035)
River Density		-0.125 (0.103)		-0.087 (0.101)		-0.097 (0.073)		-0.030 (0.067)		-0.168 (0.106)
Share Desert		0.464 (0.769)		0.335 (0.794)		-1.219 (0.898)		0.202 (0.804)		0.709 (0.842)
Average Temperature		-0.004 (0.030)		0.021 (0.028)		0.039 (0.030)		0.023 (0.026)		0.008 (0.027)
Temperature Range		0.152 (0.102)		0.149* (0.089)		0.099 (0.103)		-0.037 (0.084)		-0.109 (0.089)
Soil Quality (Climatic)	Yes	Yes	Yes	Yes	Yes	Yes	Yes	Yes	Yes	Yes
<i>N</i>	78	78	71	71	79	79	82	82	82	82

This table presents the results of a series of ordered probit regression analyses, on the ethnic-group level, of measures of pre-colonial autocracy on predicted genetic diversity, based on the migratory distance from East Africa to the interior centroid of the homeland of the ethnicity, conditional on a range of control variables at the ethnic-group level. Heteroscedasticity-consistent standard errors are reported in parentheses. \*\*\* Significant at the 1 percent level. \*\* Significant at the 5 percent level. \* Significant at the 10 percent level.

Table B.8: Predicted Diversity and Jurisdictional Hierarchy — Accounting for Irrigation Potential

	Log Number of Levels of Jurisdictional Hierarchy					
	(1)	(2)	(3)	(4)	(5)	(6)
Predicted Genetic Diversity	5.348*** (0.292)	5.632*** (0.319)	5.723*** (0.317)	3.352*** (0.994)	3.315*** (1.083)	3.284*** (1.089)
Log Percentage of Area Equipped for Irrigation	0.142*** (0.018)	0.127*** (0.020)	0.123*** (0.021)	0.158*** (0.023)	0.163*** (0.023)	0.168*** (0.023)
Log Absolute Latitude		0.032** (0.015)	0.040** (0.016)	0.085*** (0.018)	0.084*** (0.019)	0.101*** (0.021)
Elevation					0.000 (0.000)	0.000** (0.000)
Terrain Ruggedness					-0.000 (0.000)	-0.000** (0.000)
River Length					0.003*** (0.001)	0.003*** (0.001)
River Density					-0.003 (0.002)	-0.002 (0.002)
Share Desert					-0.058 (0.058)	-0.000 (0.069)
Average Temperature						0.004 (0.004)
Temperature Range						-0.025*** (0.008)
Soil Quality (Climatic)	No	No	Yes	Yes	Yes	Yes
Continental FE	No	No	No	Yes	Yes	Yes
<i>N</i>	1,076	1,076	1,076	1,076	1,076	1,076
Adjusted <i>R</i> <sup>2</sup>	0.248	0.251	0.253	0.326	0.334	0.339

This table presents the results of a series of OLS regression analyses, on the ethnic-group level, of a measure of pre-colonial jurisdictional hierarchy (the natural logarithm of the number of levels of jurisdictional hierarchy) on predicted genetic diversity, based on the migratory distance from East Africa to the interior centroid of the homeland of the ethnicity, conditional on a range of control variables including a measure of irrigation potential at the ethnic-group level. The irrigation measure is based on the “area equipped for irrigation” data of the Global Map of Irrigation Areas, version 5.0 (Siebert et al., 2013). Specifications marked with “Continental FE” accounts for sub-Saharan Africa, Latin America, and continental fixed effects. Heteroscedasticity-consistent standard errors are reported in parentheses. \*\*\* Significant at the 1 percent level. \*\* Significant at the 5 percent level. \* Significant at the 10 percent level.

Table B.9: Diversity and Jurisdictional Hierarchy — Accounting for Irrigation Potential

	Log Number of Levels of Jurisdictional Hierarchy					
	(1)	(2)	(3)	(4)	(5)	(6)
Genetic Diversity	3.285*** (0.831)	4.024*** (0.854)	4.239*** (0.876)	5.065* (2.700)	6.375** (3.096)	7.021** (3.105)
Log Percentage of Area Equipped for Irrigation	0.271*** (0.027)	0.232*** (0.034)	0.240*** (0.039)	0.209** (0.084)	0.302*** (0.086)	0.244** (0.107)
Log Absolute Latitude		0.083** (0.033)	0.075** (0.037)	0.093*** (0.035)	0.084** (0.040)	0.095** (0.041)
Elevation					0.000 (0.000)	0.000 (0.000)
Terrain Ruggedness					0.000 (0.000)	0.000 (0.000)
River Length					0.003*** (0.001)	0.003*** (0.001)
River Density					0.029 (0.022)	0.031 (0.022)
Share Desert					-0.257 (0.230)	-0.379 (0.251)
Average Temperature						0.013 (0.013)
Temperature Range						0.002 (0.025)
Soil Quality (Climatic)	No	No	Yes	Yes	Yes	Yes
Continental FE	No	No	No	Yes	Yes	Yes
<i>N</i>	131	131	131	131	131	131
Adjusted <i>R</i> <sup>2</sup>	0.254	0.277	0.309	0.329	0.354	0.351

This table presents the results of a series of OLS regression analyses, on the ethnic-group level, of a measure of pre-colonial jurisdictional hierarchy (the natural logarithm of the number of levels of jurisdictional hierarchy) on observed genetic diversity, conditional on a range of control variables including a measure of irrigation potential at the ethnic-group level. The irrigation measure is based on the “area equipped for irrigation” data of the Global Map of Irrigation Areas, version 5.0 (Siebert et al., 2013). Specifications marked with “Continental FE” accounts for sub-Saharan Africa, Latin America, and continental fixed effects. Heteroscedasticity-consistent standard errors are reported in parentheses. \*\*\* Significant at the 1 percent level. \*\* Significant at the 5 percent level. \* Significant at the 10 percent level.

Table B.10: Predicted Diversity and Jurisdictional Hierarchy — Accounting for Irrigation Potential and its Interaction with Predicted Genetic Diversity

	Log Number of Levels of Jurisdictional Hierarchy				
	(1)	(2)	(3)	(4)	(5)
Predicted Genetic Diversity	4.221*** (0.308)	4.495*** (0.326)	4.581*** (0.326)	4.569*** (0.334)	4.567*** (0.321)
Log Percentage of Area Equipped for Irrigation	-1.861*** (0.280)	-1.856*** (0.280)	-1.888*** (0.281)	-1.951*** (0.284)	-1.456*** (0.298)
Log Percentage of Area Equipped for Irrigation × Predicted Genetic Diversity	2.835*** (0.397)	2.808*** (0.396)	2.844*** (0.396)	2.946*** (0.400)	2.251*** (0.420)
Log Absolute Latitude		0.030** (0.015)	0.039** (0.016)	0.045*** (0.017)	0.101*** (0.021)
Elevation				0.000 (0.000)	0.000*** (0.000)
Terrain Ruggedness				-0.000*** (0.000)	-0.000*** (0.000)
River Length				0.003*** (0.001)	0.003*** (0.001)
River Density				-0.000 (0.001)	0.000 (0.001)
Share Desert				0.001 (0.060)	0.017 (0.063)
Average Temperature					0.011*** (0.003)
Temperature Range					-0.033*** (0.008)
Soil Quality (Climatic)	No	No	Yes	Yes	Yes
<i>N</i>	1,076	1,076	1,076	1,076	1,076
Adjusted <i>R</i> <sup>2</sup>	0.273	0.275	0.278	0.294	0.310

This table presents the results of a series of OLS regression analyses, on the ethnic-group level, of a measure of pre-colonial jurisdictional hierarchy (the natural logarithm of the number of levels of jurisdictional hierarchy) on predicted genetic diversity, based on the migratory distance from East Africa to the interior centroid of the homeland of the ethnicity, conditional on a range of control variables including a measure of irrigation potential, as well as an interaction term between this measure and predicted genetic diversity, at the ethnic-group level. The irrigation measure is based on the “area equipped for irrigation” data of the Global Map of Irrigation Areas, version 5.0 (Siebert et al., 2013). Heteroscedasticity-consistent standard errors are reported in parentheses. \*\*\* Significant at the 1 percent level. \*\* Significant at the 5 percent level. \* Significant at the 10 percent level.



Table B.11: Predicted Diversity and Jurisdictional Hierarchy — Accounting for Ecological Diversity

	Number of Levels of Jurisdictional Hierarchy					
	(1)	(2)	(3)	(4)	(5)	(6)
Predicted Genetic Diversity	4.908*** (0.294)	5.554*** (0.320)	5.648*** (0.318)	4.905*** (0.990)	5.434*** (1.072)	5.755*** (1.076)
Ecological diversity (FAO classes)	0.348*** (0.068)	0.354*** (0.068)	0.310*** (0.072)	0.298*** (0.068)	0.303*** (0.069)	0.311*** (0.069)
Any diversity (FAO)	-0.014 (0.052)	-0.028 (0.052)	-0.020 (0.054)	0.053 (0.052)	0.042 (0.052)	0.047 (0.052)
Log Absolute Latitude		0.067*** (0.013)	0.076*** (0.014)	0.102*** (0.018)	0.098*** (0.018)	0.123*** (0.020)
Elevation					-0.000 (0.000)	0.000 (0.000)
Terrain Ruggedness					-0.000 (0.000)	-0.000* (0.000)
River Length					0.002** (0.001)	0.003*** (0.001)
River Density					-0.003 (0.002)	-0.002 (0.002)
Share Desert					0.068 (0.065)	0.049 (0.073)
Average Temperature						0.009** (0.004)
Temperature Range						-0.019** (0.008)
Soil Quality (Climatic)	No	No	Yes	Yes	Yes	Yes
Continental FE	No	No	No	Yes	Yes	Yes
N	1,076	1,076	1,076	1,076	1,076	1,076
Adjusted $R^2$	0.223	0.241	0.242	0.311	0.316	0.321

This table presents the results of a series of OLS regression analyses, on the ethnic-group level, of a measure of pre-colonial jurisdictional hierarchy (the natural logarithm of the number of levels of jurisdictional hierarchy) on predicted genetic diversity, based on the migratory distance from East Africa to the interior centroid of the homeland of the ethnicity, conditional on a range of control variables including a measure of ecological diversity at the ethnic-group level. Specifications marked with “Continental FE” accounts for sub-Saharan Africa, Latin America, and continental fixed effects. Heteroscedasticity-consistent standard errors are reported in parentheses. \*\*\* Significant at the 1 percent level. \*\* Significant at the 5 percent level. \* Significant at the 10 percent level.

Table B.12: Diversity and Jurisdictional Hierarchy — Accounting for Ecological Diversity

	Log Number of Levels of Jurisdictional Hierarchy					
	(1)	(2)	(3)	(4)	(5)	(6)
Genetic Diversity	2.380** (0.963)	3.894*** (0.899)	4.041*** (0.999)	7.657*** (2.379)	9.334*** (3.194)	9.247*** (2.983)
Ecological diversity (FAO classes)	0.246 (0.279)	0.332 (0.264)	0.108 (0.294)	0.073 (0.269)	-0.006 (0.291)	0.119 (0.292)
Any diversity (FAO)	0.382** (0.175)	0.471** (0.220)	0.588** (0.267)	0.179 (0.197)	0.132 (0.296)	0.135 (0.303)
Log Absolute Latitude		0.160*** (0.030)	0.156*** (0.032)	0.094** (0.036)	0.081* (0.044)	0.099** (0.043)
Elevation					-0.000 (0.000)	0.000 (0.000)
Terrain Ruggedness					0.000 (0.000)	0.000 (0.000)
River Length					0.001*** (0.000)	0.003*** (0.001)
River Density					0.016 (0.032)	0.028 (0.026)
Share Desert					-0.166 (0.306)	-0.481* (0.253)
Average Temperature						0.028** (0.011)
Temperature Range						0.019 (0.026)
Soil Quality (Climatic)	No	No	Yes	Yes	Yes	Yes
Continental FE	No	No	No	Yes	Yes	Yes
N	131	131	131	131	131	131
Adjusted $R^2$	0.042	0.161	0.178	0.277	0.261	0.306

This table presents the results of a series of OLS regression analyses, on the ethnic-group level, of a measure of pre-colonial jurisdictional hierarchy (the natural logarithm of the number of levels of jurisdictional hierarchy) on observed genetic diversity, conditional on a range of control variables including a measure of ecological diversity at the ethnic-group level. Specifications marked with “Continental FE” accounts for sub-Saharan Africa, Latin America, and continental fixed effects. Heteroscedasticity-consistent standard errors are reported in parentheses. \*\*\* Significant at the 1 percent level. \*\* Significant at the 5 percent level. \* Significant at the 10 percent level.

Table B.13: Predicted Genetic Diversity and Jurisdictional Hierarchy — Accounting for Major Crop Type

	Log Number of Levels of Jurisdictional Hierarchy					
	(1)	(2)	(3)	(4)	(5)	(6)
Predicted Genetic Diversity	3.846*** (0.356)	4.833*** (0.388)	4.910*** (0.385)	5.923*** (1.045)	6.125*** (1.113)	5.903*** (1.112)
Non Food Crops Only	0.694*** (0.086)	0.743*** (0.138)	0.705*** (0.102)	0.650*** (0.058)	0.647*** (0.062)	0.638*** (0.063)
Vegetables	0.302** (0.152)	0.359*** (0.107)	0.385*** (0.111)	0.220* (0.122)	0.237* (0.135)	0.269** (0.132)
Tree Fruits	0.198*** (0.069)	0.390*** (0.073)	0.394*** (0.073)	0.264*** (0.079)	0.262*** (0.080)	0.252*** (0.081)
Roots or Tubers	0.186*** (0.035)	0.361*** (0.046)	0.361*** (0.045)	0.249*** (0.060)	0.249*** (0.060)	0.245*** (0.063)
Cereal Grains	0.345*** (0.036)	0.405*** (0.038)	0.396*** (0.038)	0.301*** (0.045)	0.300*** (0.046)	0.315*** (0.048)
Log Absolute Latitude		0.112*** (0.017)	0.117*** (0.017)	0.108*** (0.020)	0.105*** (0.020)	0.111*** (0.022)
Elevation					0.000 (0.000)	0.000 (0.000)
Terrain Ruggedness					-0.000 (0.000)	-0.000* (0.000)
River Length					0.003** (0.001)	0.003** (0.001)
River Density					-0.003 (0.002)	-0.003 (0.002)
Share Desert					-0.040 (0.059)	0.044 (0.071)
Average Temperature						-0.000 (0.004)
Temperature Range						-0.021** (0.008)
Soil Quality (Climatic)	No	No	Yes	Yes	Yes	Yes
Continental FE	No	No	No	Yes	Yes	Yes
<i>N</i>	1,076	1,076	1,076	1,076	1,076	1,076
Adjusted <i>R</i> <sup>2</sup>	0.254	0.291	0.292	0.317	0.323	0.326

This table presents the results of a series of OLS regression analyses, on the ethnic-group level, of a measure of pre-colonial jurisdictional hierarchy (the natural logarithm of the number of levels of jurisdictional hierarchy) on predicted genetic diversity, based on the migratory distance from East Africa to the interior centroid of the homeland of the ethnicity, conditional on a range of control variables including major crop type fixed effects at the ethnic-group level. Specifications marked with “Continental FE” accounts for sub-Saharan Africa, Latin America, and continental fixed effects. Heteroscedasticity-consistent standard errors are reported in parentheses. \*\*\* Significant at the 1 percent level. \*\* Significant at the 5 percent level. \* Significant at the 10 percent level.

Table B.14: Observed Genetic Diversity and Jurisdictional Hierarchy — Accounting for Major Crop Type

	Log Number of Levels of Jurisdictional Hierarchy					
	(1)	(2)	(3)	(4)	(5)	(6)
Genetic Diversity	2.190** (0.972)	3.631*** (1.027)	3.734*** (1.002)	7.543*** (2.448)	8.834*** (3.263)	9.723*** (2.983)
Tree Fruits	-0.117 (0.326)	-0.171 (0.349)	0.004 (0.373)	0.265 (0.342)	0.253 (0.360)	0.166 (0.359)
Roots or Tubers	-0.016 (0.169)	-0.028 (0.178)	0.128 (0.171)	0.115 (0.211)	0.092 (0.262)	-0.041 (0.240)
Cereal Grains	0.301** (0.147)	0.181 (0.174)	0.316** (0.157)	0.139 (0.187)	0.133 (0.211)	-0.026 (0.191)
Log Absolute Latitude		0.125*** (0.033)	0.116*** (0.039)	0.079* (0.045)	0.069 (0.048)	0.103** (0.051)
Elevation					-0.000 (0.000)	0.000 (0.000)
Terrain Ruggedness					0.000 (0.000)	0.000 (0.000)
River Length					0.001*** (0.000)	0.003*** (0.001)
River Density					0.015 (0.031)	0.029 (0.025)
Share Desert					-0.167 (0.317)	-0.509* (0.271)
Average Temperature						0.028** (0.012)
Temperature Range						0.015 (0.025)
Soil Quality (Climatic)	No	No	Yes	Yes	Yes	Yes
Continental FE	No	No	No	Yes	Yes	Yes
<i>N</i>	131	131	131	131	131	131
Adjusted $R^2$	0.092	0.154	0.190	0.274	0.260	0.300

This table presents the results of a series of OLS regression analyses, on the ethnic-group level, of a measure of pre-colonial jurisdictional hierarchy (the natural logarithm of the number of levels of jurisdictional hierarchy) on observed genetic diversity, conditional on a range of control variables including major crop type fixed effects at the ethnic-group level. Specifications marked with “Continental FE” accounts for sub-Saharan Africa, Latin America, and continental fixed effects. Heteroscedasticity-consistent standard errors are reported in parentheses. \*\*\* Significant at the 1 percent level. \*\* Significant at the 5 percent level. \* Significant at the 10 percent level.

Table B.15: Observed Diversity and Jurisdictional Hierarchy — Accounting for SD of Soil Suitability

	Log Number of Levels of Jurisdictional Hierarchy					
	(1)	(2)	(3)	(4)	(5)	(6)
Predicted Genetic Diversity	5.062*** (0.294)	5.720*** (0.323)	5.719*** (0.321)	4.093*** (1.060)	4.694*** (1.129)	4.840*** (1.125)
Log Absolute Latitude		0.070*** (0.014)	0.069*** (0.015)	0.097*** (0.018)	0.097*** (0.019)	0.123*** (0.021)
Elevation					-0.000 (0.000)	0.000** (0.000)
Terrain Ruggedness					-0.000 (0.000)	-0.000** (0.000)
River Length					0.002** (0.001)	0.003*** (0.001)
River Density					-0.001 (0.002)	-0.001 (0.002)
Share Desert					-0.005 (0.065)	-0.003 (0.073)
Average Temperature						0.009** (0.004)
Temperature Range						-0.026*** (0.008)
Soil Suitability SD FE	Yes	Yes	Yes	Yes	Yes	Yes
Soil Quality (Climatic)	No	No	Yes	Yes	Yes	Yes
Continental FE	No	No	No	Yes	Yes	Yes
<i>N</i>	1,076	1,076	1,076	1,076	1,076	1,076
Adjusted <i>R</i> <sup>2</sup>	0.214	0.232	0.237	0.309	0.313	0.319

This table presents the results of a series of OLS regression analyses, on the ethnic-group level, of a measure of pre-colonial jurisdictional hierarchy (the natural logarithm of the number of levels of jurisdictional hierarchy) on predicted genetic diversity, based on the migratory distance from East Africa to the interior centroid of the homeland of the ethnicity, conditional on a range of control variables including decile of standard deviation of soil suitability fixed effects at the ethnic-group level. Specifications marked with “Continental FE” accounts for sub-Saharan Africa, Latin America, and continental fixed effects. Heteroscedasticity-consistent standard errors are reported in parentheses. \*\*\* Significant at the 1 percent level. \*\* Significant at the 5 percent level. \* Significant at the 10 percent level.

Table B.16: Observed Diversity and Jurisdictional Hierarchy — Accounting for SD of Soil Suitability

	Log Number of Levels of Jurisdictional Hierarchy					
	(1)	(2)	(3)	(4)	(5)	(6)
Genetic Diversity	2.623*** (0.929)	4.282*** (0.953)	4.181*** (1.016)	6.313** (2.416)	7.673** (2.975)	7.655*** (2.905)
Log Absolute Latitude		0.158*** (0.031)	0.143*** (0.034)	0.084** (0.038)	0.053 (0.044)	0.082* (0.049)
Elevation					-0.000 (0.000)	0.000 (0.000)
Terrain Ruggedness					0.000 (0.000)	0.000 (0.000)
River Length					0.001 (0.001)	0.002*** (0.001)
River Density					-0.006 (0.037)	0.005 (0.031)
Share Desert					-0.396 (0.291)	-0.751*** (0.239)
Average Temperature						0.030*** (0.011)
Temperature Range						-0.001 (0.027)
Soil Suitability SD FE	Yes	Yes	Yes	Yes	Yes	Yes
Soil Quality (Climatic)	No	No	Yes	Yes	Yes	Yes
Continental FE	No	No	No	Yes	Yes	Yes
<i>N</i>	131	131	131	131	131	131
Adjusted $R^2$	0.095	0.205	0.230	0.321	0.311	0.359

This table presents the results of a series of OLS regression analyses, on the ethnic-group level, of a measure of pre-colonial jurisdictional hierarchy (the natural logarithm of the number of levels of jurisdictional hierarchy) on observed genetic diversity, conditional on a range of control variables including decile of standard deviation of soil suitability fixed effects at the ethnic-group level. Specifications marked with “Continental FE” accounts for sub-Saharan Africa, Latin America, and continental fixed effects. Heteroscedasticity-consistent standard errors are reported in parentheses. \*\*\* Significant at the 1 percent level. \*\* Significant at the 5 percent level. \* Significant at the 10 percent level.

Table B.17: Predicted Genetic Diversity and Jurisdictional Hierarchy — Accounting for Scale

	Log Number of Levels of Jurisdictional Hierarchy					
	(1)	(2)	(3)	(4)	(5)	(6)
Predicted Genetic Diversity	4.215*** (0.286)	4.493*** (0.300)	4.566*** (0.304)	3.531*** (0.953)	3.061*** (1.037)	3.071*** (1.034)
Area	0.001 (0.001)	0.001 (0.001)	0.001 (0.001)	0.001 (0.001)	0.003*** (0.001)	0.003*** (0.001)
Size of Local Community: Fewer than 50	-0.180*** (0.037)	-0.183*** (0.038)	-0.171*** (0.038)	-0.145*** (0.038)	-0.161*** (0.039)	-0.162*** (0.039)
Size of Local Community: 50–99	-0.127*** (0.042)	-0.132*** (0.041)	-0.131*** (0.042)	-0.125*** (0.040)	-0.128*** (0.040)	-0.130*** (0.041)
Size of Local Community: 100–199	-0.007 (0.044)	-0.004 (0.044)	0.000 (0.045)	0.011 (0.044)	0.003 (0.044)	-0.002 (0.044)
Size of Local Community: 200–399	-0.052 (0.053)	-0.054 (0.053)	-0.054 (0.053)	-0.040 (0.052)	-0.055 (0.052)	-0.054 (0.052)
Size of Local Community: 400–1,000	0.069 (0.057)	0.064 (0.056)	0.052 (0.057)	0.047 (0.058)	0.043 (0.060)	0.041 (0.060)
Size of Local Community: 1,000 w/o Towns over 5,000	-0.110 (0.129)	-0.117 (0.131)	-0.107 (0.129)	-0.113 (0.131)	-0.125 (0.132)	-0.122 (0.131)
Size of Local Community: Towns of 5,000–50,000	0.597*** (0.081)	0.589*** (0.082)	0.591*** (0.082)	0.522*** (0.087)	0.519*** (0.084)	0.517*** (0.083)
Size of Local Community: Cities of 50,000 or more	0.837*** (0.033)	0.813*** (0.035)	0.805*** (0.037)	0.769*** (0.047)	0.772*** (0.049)	0.770*** (0.048)
Log Absolute Latitude		0.029** (0.012)	0.033** (0.013)	0.071*** (0.017)	0.074*** (0.018)	0.085*** (0.020)
Elevation					0.000* (0.000)	0.000** (0.000)
Terrain Ruggedness					-0.000 (0.000)	-0.000** (0.000)
River Length					-0.005** (0.002)	-0.005** (0.002)
River Density					0.002 (0.002)	0.002 (0.002)
Share Desert					0.019 (0.055)	0.064 (0.067)
Average Temperature						0.002 (0.003)
Temperature Range						-0.016** (0.008)
Soil Quality (Climatic)	No	No	Yes	Yes	Yes	Yes
Continental FE	No	No	No	Yes	Yes	Yes
<i>N</i>	1,076	1,076	1,076	1,076	1,076	1,076
Adjusted <i>R</i> <sup>2</sup>	0.403	0.405	0.406	0.425	0.429	0.430

This table presents the results of a series of OLS regression analyses, on the ethnic-group level, of a measure of pre-colonial jurisdictional hierarchy (the natural logarithm of the number of levels of jurisdictional hierarchy) on predicted genetic diversity, based on the migratory distance from East Africa to the interior centroid of the homeland of the ethnicity, conditional on a range of control variables including ethnicity-homeland area and mean size of local communities fixed effects at the ethnic-group level. Specifications marked with “Continental FE” accounts for sub-Saharan Africa, Latin America, and continental fixed effects. Heteroscedasticity-consistent standard errors are reported in parentheses. \*\*\* Significant at the 1 percent level. \*\* Significant at the 5 percent level. \* Significant at the 10 percent level.

Table B.18: Observed Genetic Diversity and Jurisdictional Hierarchy — Accounting for Scale

	Log Number of Levels of Jurisdictional Hierarchy					
	(1)	(2)	(3)	(4)	(5)	(6)
Genetic Diversity	2.899*** (0.723)	3.845*** (0.800)	3.819*** (0.914)	3.778* (2.189)	5.399* (2.873)	5.689** (2.852)
Area	0.000 (0.000)	0.000 (0.000)	0.000** (0.000)	0.000** (0.000)	0.005** (0.002)	0.004** (0.002)
Size of Local Community: Fewer than 50	0.020 (0.155)	0.094 (0.163)	-0.002 (0.155)	-0.013 (0.151)	0.051 (0.138)	0.082 (0.140)
Size of Local Community: 50–99	-0.121 (0.142)	-0.114 (0.133)	0.001 (0.145)	0.039 (0.140)	0.039 (0.162)	0.077 (0.158)
Size of Local Community: 100–199	0.087 (0.120)	0.141 (0.119)	0.133 (0.129)	0.122 (0.150)	0.050 (0.145)	0.042 (0.152)
Size of Local Community: 200–399	-0.143 (0.176)	-0.133 (0.155)	-0.108 (0.162)	-0.114 (0.195)	-0.230 (0.200)	-0.237 (0.185)
Size of Local Community: 400–1,000	0.218* (0.119)	0.163 (0.118)	0.233* (0.132)	0.195 (0.135)	0.223 (0.156)	0.233 (0.153)
Size of Local Community: 1,000 w/o Towns over 5,000	-0.559*** (0.075)	-0.557*** (0.073)	-0.576*** (0.106)	-0.572*** (0.110)	-0.645*** (0.108)	-0.695*** (0.124)
Size of Local Community: Towns of 5,000–50,000	0.682*** (0.238)	0.661** (0.256)	0.628** (0.255)	0.857*** (0.133)	0.897*** (0.131)	0.922*** (0.134)
Size of Local Community: Cities of 50,000 or more	0.887*** (0.084)	0.825*** (0.088)	0.826*** (0.102)	0.760*** (0.109)	0.814*** (0.119)	0.779*** (0.128)
Log Absolute Latitude		0.082** (0.034)	0.054 (0.038)	0.061 (0.043)	0.082* (0.042)	0.071 (0.046)
Elevation					0.000 (0.000)	-0.000 (0.000)
Terrain Ruggedness					0.000 (0.000)	0.000* (0.000)
River Length					-0.012** (0.005)	-0.010** (0.005)
River Density					0.065*** (0.024)	0.067*** (0.024)
Share Desert					-0.076 (0.233)	-0.254 (0.245)
Average Temperature						0.006 (0.010)
Temperature Range						0.033 (0.022)
Soil Quality (Climatic)	No	No	Yes	Yes	Yes	Yes
Continental FE	No	No	No	Yes	Yes	Yes
<i>N</i>	131	131	131	131	131	131
Adjusted <i>R</i> <sup>2</sup>	0.387	0.411	0.427	0.503	0.522	0.526

This table presents the results of a series of OLS regression analyses, on the ethnic-group level, of a measure of pre-colonial jurisdictional hierarchy (the natural logarithm of the number of levels of jurisdictional hierarchy) on observed genetic diversity, conditional on a range of control variables including ethnicity-homeland area and mean size of local communities fixed effects at the ethnic-group level. Specifications marked with “Continental FE” accounts for sub-Saharan Africa, Latin America, and continental fixed effects. Heteroscedasticity-consistent standard errors are reported in parentheses. \*\*\* Significant at the 1 percent level. \*\* Significant at the 5 percent level. \* Significant at the 10 percent level.



Table B.19: Predicted Genetic Diversity and Jurisdictional Hierarchy — Excluding Africa

	Log Number of Levels of Jurisdictional Hierarchy					
	(1)	(2)	(3)	(4)	(5)	(6)
Predicted Genetic Diversity	6.525*** (0.548)	6.520*** (0.564)	6.538*** (0.569)	6.524*** (1.215)	7.791*** (1.297)	7.791*** (1.290)
Log Absolute Latitude		0.001 (0.020)	0.024 (0.022)	0.104*** (0.033)	0.099*** (0.033)	0.156*** (0.045)
Elevation					0.000 (0.000)	0.000* (0.000)
Terrain Ruggedness					-0.000*** (0.000)	-0.000*** (0.000)
River Length					0.002** (0.001)	0.003*** (0.001)
River Density					-0.003 (0.002)	-0.003 (0.002)
Share Desert					-0.037 (0.074)	-0.065 (0.084)
Average Temperature						0.012** (0.005)
Temperature Range						-0.022** (0.011)
Soil Quality (Climatic)	No	No	Yes	Yes	Yes	Yes
Continental FE	No	No	No	Yes	Yes	Yes
<i>N</i>	590	590	590	590	590	590
Adjusted <i>R</i> <sup>2</sup>	0.219	0.217	0.256	0.331	0.353	0.361

This table presents the results of a series of OLS regression analyses, on the ethnic-group level, of a measure of pre-colonial jurisdictional hierarchy (the natural logarithm of the number of levels of jurisdictional hierarchy) on predicted genetic diversity, based on the migratory distance from East Africa to the interior centroid of the homeland of the ethnicity, conditional on a range of control variables and excluding observations from Africa at the ethnic-group level. Specifications marked with “Continental FE” accounts for sub-Saharan Africa, Latin America, and continental fixed effects. Heteroscedasticity-consistent standard errors are reported in parentheses. \*\*\* Significant at the 1 percent level. \*\* Significant at the 5 percent level. \* Significant at the 10 percent level.

Table B.20: Genetic Diversity and Jurisdictional Hierarchy — Excluding Africa

	Log Number of Levels of Jurisdictional Hierarchy					
	(1)	(2)	(3)	(4)	(5)	(6)
Genetic Diversity	8.694*** (1.186)	8.581*** (1.477)	10.082*** (1.352)	10.082*** (1.352)	8.511*** (2.539)	9.199*** (2.286)
Log Absolute Latitude		0.013 (0.106)	-0.173 (0.128)	-0.173 (0.128)	-0.227 (0.135)	0.088 (0.276)
Elevation					0.000* (0.000)	0.000 (0.000)
Terrain Ruggedness					-0.000** (0.000)	-0.000 (0.000)
River Length					0.002** (0.001)	0.003*** (0.001)
River Density					-0.008 (0.025)	0.017 (0.027)
Share Desert					0.247 (0.495)	-0.424 (0.541)
Average Temperature						0.033 (0.022)
Temperature Range						0.020 (0.046)
Soil Quality (Climatic)	No	No	Yes	Yes	Yes	Yes
<i>N</i>	54	54	54	54	54	54
Adjusted <i>R</i> <sup>2</sup>	0.356	0.343	0.330	0.330	0.385	0.432

This table presents the results of a series of OLS regression analyses, on the ethnic-group level, of a measure of pre-colonial jurisdictional hierarchy (the natural logarithm of the number of levels of jurisdictional hierarchy) on observed genetic diversity, conditional on a range of control variables and excluding observations from Africa at the ethnic-group level. Heteroscedasticity-consistent standard errors are reported in parentheses. \*\*\* Significant at the 1 percent level. \*\* Significant at the 5 percent level. \* Significant at the 10 percent level.

Given the low number of observations when excluding Africa and focusing on the sample of observed genetic diversity, this robustness table is generated without inclusion of continental dummies. Table B.19 establishes that the results are robust to accounting for continental fixed effects when excluding Africa in the larger sample of predicted genetic diversity.

Table B.21: Predicted Genetic Diversity and Jurisdictional Hierarchy — Accounting for Year in *Ethnographic Atlas*

	Log Number of Levels of Jurisdictional Hierarchy					
	(1)	(2)	(3)	(4)	(5)	(6)
Predicted Genetic Diversity	5.223*** (0.288)	5.810*** (0.316)	5.879*** (0.313)	5.300*** (1.009)	5.422*** (1.100)	5.644*** (1.105)
Year in Ethnographic Atlas	-0.000*** (0.000)	-0.000** (0.000)	-0.000** (0.000)	-0.000** (0.000)	-0.000** (0.000)	-0.000** (0.000)
Log Absolute Latitude		0.064*** (0.014)	0.075*** (0.015)	0.107*** (0.018)	0.105*** (0.019)	0.127*** (0.021)
Elevation					0.000 (0.000)	0.000** (0.000)
Terrain Ruggedness					-0.000* (0.000)	-0.000*** (0.000)
River Length					0.003*** (0.001)	0.003*** (0.001)
River Density					-0.003 (0.002)	-0.002 (0.002)
Share Desert					0.005 (0.062)	0.009 (0.072)
Average Temperature						0.007* (0.004)
Temperature Range						-0.020** (0.008)
Soil Quality (Climatic)	No	No	Yes	Yes	Yes	Yes
Continental FE	No	No	No	Yes	Yes	Yes
<i>N</i>	1,075	1,075	1,075	1,075	1,075	1,075
Adjusted $R^2$	0.204	0.220	0.228	0.295	0.302	0.305

This table presents the results of a series of OLS regression analyses, on the ethnic-group level, of a measure of pre-colonial jurisdictional hierarchy (the natural logarithm of the number of levels of jurisdictional hierarchy) on predicted genetic diversity, based on the migratory distance from East Africa to the interior centroid of the homeland of the ethnicity, conditional on a range of control variables including the approximate year of description as reported in the *Ethnographic Atlas* at the ethnic-group level. Specifications marked with “Continental FE” accounts for sub-Saharan Africa, Latin America, and continental fixed effects. Heteroscedasticity-consistent standard errors are reported in parentheses. \*\*\* Significant at the 1 percent level. \*\* Significant at the 5 percent level. \* Significant at the 10 percent level.

Table B.22: Genetic Diversity and Jurisdictional Hierarchy — Accounting for Year in *Ethnographic Atlas*

	Log Levels of Jurisdictional Hierarchy			
	(1)	(2)	(3)	(4)
Genetic Diversity	1.940*	7.620***	7.222**	7.328**
	(1.089)	(2.551)	(3.140)	(3.068)
Year in Ethnographic Atlas	-0.001	-0.000	-0.001	-0.002
	(0.001)	(0.001)	(0.001)	(0.001)
Log Absolute Latitude		-0.009	0.054	0.095***
		(0.027)	(0.033)	(0.027)
Elevation			0.000***	0.000***
			(0.000)	(0.000)
Terrain Ruggedness			-0.000	-0.000
			(0.000)	(0.000)
River Length			0.000	0.002***
			(0.000)	(0.001)
River Density			-0.057	-0.065
			(0.083)	(0.075)
Share Desert			0.295*	0.337
			(0.172)	(0.226)
Average Temperature				0.023**
				(0.011)
Temperature Range				-0.040
				(0.027)
Soil Quality (Climatic)	No	Yes	Yes	Yes
Continental FE	No	Yes	Yes	Yes
<i>N</i>	94	94	94	94
Adjusted <i>R</i> <sup>2</sup>	0.029	0.085	0.150	0.202

This table presents the results of a series of OLS regression analyses, on the ethnic-group level, of a measure of pre-colonial jurisdictional hierarchy (the natural logarithm of the number of levels of jurisdictional hierarchy) on observed genetic diversity, conditional on a range of control variables including the approximate year of description as reported in the *Ethnographic Atlas* at the ethnic-group level. Specifications marked with “Continental FE” accounts for sub-Saharan Africa, Latin America, and continental fixed effects. Heteroscedasticity-consistent standard errors are reported in parentheses. \*\*\* Significant at the 1 percent level. \*\* Significant at the 5 percent level. \* Significant at the 10 percent level.

Table B.23: Predicted Diversity and Jurisdictional Hierarchy — Levels Specification

	Number of Levels of Jurisdictional Hierarchy					
	(1)	(2)	(3)	(4)	(5)	(6)
Predicted Genetic Diversity	9.357*** (0.600)	10.779*** (0.684)	10.879*** (0.673)	11.149*** (2.144)	11.390*** (2.369)	11.810*** (2.417)
Log Absolute Latitude		0.149*** (0.028)	0.175*** (0.030)	0.214*** (0.037)	0.209*** (0.038)	0.250*** (0.043)
Elevation					0.000 (0.000)	0.000* (0.000)
Terrain Ruggedness					-0.000* (0.000)	-0.000** (0.000)
River Length					0.007*** (0.003)	0.008*** (0.003)
River Density					-0.010* (0.005)	-0.009* (0.005)
Share desert					0.012 (0.132)	0.027 (0.156)
Average Temperature						0.013 (0.008)
Temperature Range						-0.039** (0.017)
Soil Quality (Climatic)	No	No	Yes	Yes	Yes	Yes
Continental FE	No	No	No	Yes	Yes	Yes
<i>N</i>	1,076	1,076	1,076	1,076	1,076	1,076
Adjusted $R^2$	0.158	0.179	0.185	0.269	0.285	0.287

This table presents the results of a series of OLS regression analyses, on the ethnic-group level, of a measure of pre-colonial jurisdictional hierarchy (the number of levels of jurisdictional hierarchy) on predicted genetic diversity, based on the migratory distance from East Africa to the interior centroid of the homeland of the ethnicity, conditional on a range of control variables at the ethnic-group level. Specifications marked with “Continental FE” accounts for sub-Saharan Africa, Latin America, and continental fixed effects. Heteroscedasticity-consistent standard errors are reported in parentheses. \*\*\* Significant at the 1 percent level. \*\* Significant at the 5 percent level. \* Significant at the 10 percent level.

Table B.24: Diversity and Jurisdictional Hierarchy — Levels Specification

	Number of Levels of Jurisdictional Hierarchy					
	(1)	(2)	(3)	(4)	(5)	(6)
Genetic Diversity	4.308** (2.065)	7.595*** (2.021)	8.109*** (1.919)	17.567*** (5.280)	19.777*** (6.844)	20.081*** (6.335)
Log Absolute Latitude		0.329*** (0.069)	0.337*** (0.080)	0.181** (0.076)	0.140 (0.089)	0.191** (0.093)
Elevation					-0.000 (0.000)	0.000 (0.000)
Terrain Ruggedness					0.000 (0.000)	0.000 (0.000)
River Length					0.004*** (0.001)	0.007*** (0.002)
River Density					0.009 (0.071)	0.034 (0.055)
Share desert					-0.499 (0.677)	-1.284** (0.588)
Average Temperature						0.069** (0.026)
Temperature Range						0.026 (0.053)
Soil Quality (Climatic)	No	No	Yes	Yes	Yes	Yes
Continental FE	No	No	No	Yes	Yes	Yes
<i>N</i>	131	131	131	131	131	131
Adjusted $R^2$	0.017	0.120	0.129	0.249	0.249	0.304

This table presents the results of a series of OLS regression analyses, on the ethnic-group level, of a measure of pre-colonial jurisdictional hierarchy (the number of levels of jurisdictional hierarchy) on observed genetic diversity, conditional on a range of control variables at the ethnic-group level. Specifications marked with “Continental FE” accounts for sub-Saharan Africa, Latin America, and continental fixed effects. Heteroscedasticity-consistent standard errors are reported in parentheses. \*\*\* Significant at the 1 percent level. \*\* Significant at the 5 percent level. \* Significant at the 10 percent level.

Table B.25: Predicted Diversity and Jurisdictional Hierarchy — Accounting for Irrigation Potential with Predicted Genetic Diversity

	Degree of Absence of Checks on Leader's Power		Difficulty of Removal of Leaders		Leader's Exercise of Authority		Degree of Lack of Community Decisions		Perception of Leader's Power	
	(1)	(2)	(3)	(4)	(5)	(6)	(7)	(8)	(9)	(10)
Predicted Genetic Diversity	5.688*** (2.091)	4.914** (2.320)	5.413** (2.055)	4.813** (2.114)	5.413*** (1.999)	5.143** (2.028)	6.447*** (1.563)	5.988*** (1.702)	5.363*** (1.799)	5.418** (2.114)
Log Percentage of Area Equipped for Irrigation	0.237*** (0.088)	0.180* (0.092)	0.480*** (0.123)	0.383*** (0.125)	0.151 (0.107)	0.121 (0.118)	0.041 (0.082)	0.017 (0.085)	0.048 (0.102)	0.042 (0.108)
Log Absolute Latitude	-0.032 (0.098)	-0.109 (0.184)	0.000 (0.099)	0.077 (0.145)	-0.098 (0.095)	-0.052 (0.175)	-0.113 (0.072)	-0.047 (0.124)	0.011 (0.088)	0.082 (0.146)
Elevation		-0.000 (0.000)		-0.000 (0.000)		-0.000 (0.000)		0.000 (0.000)		0.000 (0.000)
Terrain Ruggedness		0.000 (0.000)		0.000 (0.000)		0.000 (0.000)		0.000 (0.000)		-0.000 (0.000)
Average Temperature		-0.003 (0.020)		0.020 (0.020)		0.020 (0.019)		0.015 (0.015)		0.011 (0.016)
Temperature Range		0.094 (0.068)		0.060 (0.068)		0.058 (0.062)		-0.013 (0.049)		-0.048 (0.054)
River Length		0.011 (0.008)		-0.004 (0.009)		0.007 (0.007)		0.001 (0.007)		0.013* (0.007)
River Density		-0.064 (0.050)		-0.028 (0.034)		-0.044 (0.035)		-0.017 (0.041)		-0.044 (0.032)
Share Desert		0.012 (0.562)		-0.191 (0.597)		-0.663 (0.545)		0.057 (0.488)		0.087 (0.483)
Soil Quality (Climatic)	Yes	Yes	Yes	Yes	Yes	Yes	Yes	Yes	Yes	Yes
N	78	78	71	71	79	79	82	82	82	82
Adjusted R2	0.118	0.132	0.228	0.248	0.132	0.110	0.189	0.132	0.154	0.096

This table presents the results of a series of OLS regression analyses, on the ethnic-group level, of measures of pre-colonial autocracy on predicted genetic diversity, based on the migratory distance from East Africa to the interior centroid of the homeland of the ethnicity, conditional on a range of control variables at the ethnic-group level including a measure of irrigation potential at the ethnic-group level. The irrigation measure is based on the "area equipped for irrigation" data of the Global Map of Irrigation Areas, version 5.0 (Siebert et al., 2013). Heteroscedasticity-consistent standard errors are reported in parentheses. \*\*\* Significant at the 1 percent level. \*\* Significant at the 5 percent level. \* Significant at the 10 percent level.

Table B.26: Observed Genetic Diversity and Indigenous Autocracy

	Indigenous Autocracy			
	(1)	(2)	(3)	(4)
Genetic Diversity	1.866*	7.627***	7.338**	7.591**
	(1.070)	(2.517)	(3.105)	(3.089)
Log Absolute Latitude		-0.008	0.055*	0.093***
		(0.027)	(0.033)	(0.027)
Elevation			0.000***	0.000***
			(0.000)	(0.000)
Terrain Ruggedness			-0.000	-0.000
			(0.000)	(0.000)
River Length			0.000	0.001**
			(0.000)	(0.001)
River Density			-0.059	-0.067
			(0.081)	(0.073)
Share Desert			0.273	0.298
			(0.169)	(0.224)
Average Temperature				0.019*
				(0.011)
Temperature Range				-0.038
				(0.027)
Soil Quality (Climatic)	No	Yes	Yes	Yes
Continental FE	No	Yes	Yes	Yes
$N$	94	94	94	94
Adjusted $R^2$	0.032	0.097	0.159	0.197

This table presents the results of a series of OLS regression analyses, on the ethnic-group level, of a measure of pre-colonial autocracy on observed genetic diversity, conditional on a range of control variables. Specifications marked with “Continental FE” accounts for sub-Saharan Africa, Latin America, and continental fixed effects. Heteroscedasticity-consistent standard errors are reported in parentheses. \*\*\* Significant at the 1 percent level. \*\* Significant at the 5 percent level. \* Significant at the 10 percent level.



Table B.27: Persistence of Institutions — Old and New World

	Executive Constraints						Autocracy					
	(1)	(2)	(3)	(4)	(5)	(6)						
Degree of Absence of Checks on Leader's Power	-0.186*** (0.052)	-0.093* (0.050)	-0.084 (0.052)				0.519*** (0.108)	0.343** (0.131)	0.315** (0.138)			
Degree of Absence of Checks on Leader's Power (Ancestry Adjusted)				-0.191*** (0.054)	-0.105* (0.057)	-0.111* (0.056)				0.553*** (0.118)	0.372** (0.150)	0.386** (0.147)
Predicted Genetic Diversity			-1.981** (0.902)						6.069*** (2.164)			
Predicted Genetic Diversity (Ancestry Adjusted)						-3.705* (1.915)						9.729** (4.609)
Log Absolute Latitude		-0.067 (0.045)	-0.074 (0.045)		-0.076 (0.046)	-0.084* (0.048)	0.089 (0.122)	0.110 (0.107)		0.121 (0.125)	0.141 (0.115)	
Soil Fertility		0.294 (0.376)	0.194 (0.385)		0.270 (0.371)	0.124 (0.390)	-1.016 (0.945)	-0.709 (0.910)		-0.955 (0.957)	-0.571 (0.927)	
Roughness		0.264 (0.449)	-0.048 (0.448)		0.173 (0.451)	-0.446 (0.565)	-0.523 (1.162)	0.431 (1.146)		-0.186 (1.196)	1.441 (1.473)	
Elevation		-0.206** (0.096)	-0.167 (0.103)		-0.195* (0.103)	-0.106 (0.117)	0.558* (0.285)	0.440 (0.313)		0.525* (0.305)	0.292 (0.360)	
Average Distance to Nearest Waterway		-0.302*** (0.107)	-0.259** (0.109)		-0.322*** (0.107)	-0.312*** (0.105)	0.323 (0.270)	0.190 (0.287)		0.398 (0.277)	0.372 (0.275)	
Percentage of Arable Land		0.004 (0.004)	0.005 (0.004)		0.004 (0.004)	0.005 (0.004)	-0.001 (0.009)	-0.006 (0.009)		-0.001 (0.009)	-0.004 (0.009)	
Temperature		-0.024*** (0.007)	-0.020*** (0.007)		-0.026*** (0.007)	-0.025*** (0.007)	0.030* (0.017)	0.018 (0.017)		0.036** (0.017)	0.032* (0.016)	
Colony		0.192 (0.119)	0.103 (0.137)		0.198 (0.119)	0.139 (0.132)	-0.421* (0.229)	-0.148 (0.273)		-0.442* (0.230)	-0.290 (0.263)	
<i>N</i>	47	47	47	47	47	47	47	47	47	47	47	47
Adjusted <i>R</i> <sup>2</sup>	0.151	0.413	0.447	0.124	0.413	0.441	0.234	0.280	0.349	0.208	0.273	0.310

This table presents the results of a series of OLS regression analyses, on the contemporary country level, of measures of contemporary autocracy on measures of pre-colonial autocracy on the sample of all countries with available data. Specifications marked with “Continental FE” accounts for sub-Saharan Africa, Latin America, and continental fixed effects. Heteroscedasticity-consistent standard errors are reported in parentheses. \*\*\* Significant at the 1 percent level. \*\* Significant at the 5 percent level. \* Significant at the 10 percent level.

Table B.28: Persistence of Institutions — Indigenous Autocracy

	Executive Constraints		Autocracy		Executive Constraints	Autocracy
	(1)	(2)	(3)	(4)	(5)	(6)
Log Indigenous Autocracy	-0.237*** (0.070)		0.466*** (0.158)		-0.287*** (0.076)	0.549*** (0.169)
Log Indigenous Autocracy (Ancestry Adjusted)		-0.377*** (0.077)		0.764*** (0.172)		
<i>N</i>	95	95	95	95	80	80
Adjusted $R^2$	0.054	0.128	0.038	0.101	0.081	0.057

This table presents the results of a series of OLS regression analyses, on the contemporary country level, of measures of contemporary autocracy on a measure of pre-colonial democracy. Specifications marked with “Continental FE” accounts for sub-Saharan Africa, Latin America, and continental fixed effects. Heteroscedasticity-consistent standard errors are reported in parentheses. \*\*\* Significant at the 1 percent level. \*\* Significant at the 5 percent level. \* Significant at the 10 percent level.

Table B.29: Persistence of Institutions — Alternative Aggregation Method

	Executive Constraints		Autocracy		Executive Con- straints	Autocracy
	(1)	(2)	(3)	(4)	(5)	(6)
Indigenous Democracy	0.248*** (0.081)		-0.466*** (0.168)		0.305*** (0.085)	-0.553*** (0.176)
Indigenous Democracy (Ancestry Adjusted)		0.313*** (0.091)		-0.565*** (0.191)		
N	144	144	144	144	127	127
Adjusted $R^2$	0.056	0.069	0.045	0.050	0.085	0.065

This table presents the results of a series of OLS regression analyses, on the contemporary country level, of measures of contemporary autocracy on a measure of pre-colonial democracy, conditional on sub-Saharan Africa, Latin America, and continental fixed effects. Specifications marked with “Continental FE” accounts for sub-Saharan Africa, Latin America, and continental fixed effects. Heteroscedasticity-consistent standard errors are reported in parentheses. \*\*\* Significant at the 1 percent level. \*\* Significant at the 5 percent level. \* Significant at the 10 percent level.

This table shows the robustness of the findings in Table 11 and B.28 to using a measure of indigenous democracy (rather than indigenous autocracy) that is derived from an alternative aggregation procedure from the ethnic group level to the country level, based on Giuliano and Nunn (2013) (see Alesina et al. (2013) for an explanation of the methodology used in the construction of the data). This procedure generates a larger sample of countries with aggregated institutional information.

Table B.30: Predicted Diversity and Constraint on the Executive (2013)

	Log Constraint on Chief Executive						
	(1)	(2)	(3)	(4)	(5)	(6)	(7)
Predicted Genetic Diversity	-3.397*** (0.902)	-3.449*** (0.898)	-2.423** (0.948)	-2.495*** (0.939)	-3.081** (1.547)	-3.159** (1.473)	-3.277** (1.464)
Log Absolute Latitude		0.082** (0.032)	0.051 (0.034)	-0.044 (0.049)	0.018 (0.051)	0.016 (0.048)	0.023 (0.048)
Soil Fertility			0.319 (0.227)	0.244 (0.217)	0.067 (0.193)	0.205 (0.191)	0.205 (0.192)
Roughness			0.167 (0.309)	0.059 (0.324)	0.355 (0.338)	0.441 (0.314)	0.526* (0.304)
Elevation			0.039 (0.084)	0.013 (0.084)	0.109 (0.105)	0.048 (0.096)	0.047 (0.090)
Average Distance to Nearest Waterway			-0.197** (0.096)	-0.265*** (0.092)	-0.171* (0.087)	-0.080 (0.092)	-0.062 (0.092)
Percentage of Arable Land			0.003 (0.002)	0.002 (0.002)	0.003 (0.003)	0.003 (0.002)	0.003 (0.002)
Temperature				-0.017*** (0.006)	-0.003 (0.010)	-0.005 (0.010)	-0.011 (0.010)
Colony							0.258* (0.154)
Continental FE	No	No	No	No	Yes	Yes	Yes
Legal Origin FE	No	No	No	No	No	Yes	Yes
<i>N</i>	140	140	140	140	140	140	140
Adjusted $R^2$	0.050	0.082	0.175	0.228	0.330	0.390	0.406

This table presents the results of a series of OLS regression analyses, on the contemporary country level, of a measure of contemporary autocracy on predicted genetic diversity, conditional on a range of control variables. Specifications marked with “Continental FE” accounts for sub-Saharan Africa, Latin America, and continental fixed effects. Heteroscedasticity-consistent standard errors are reported in parentheses. \*\*\* Significant at the 1 percent level. \*\* Significant at the 5 percent level. \* Significant at the 10 percent level.

Table B.31: Predicted Diversity and Constraint on the Executive — Accounting for Irrigation Potential

	Log Constraint on Chief Executive						
	(1)	(2)	(3)	(4)	(5)	(6)	(7)
Predicted Genetic Diversity	-4.055*** (0.811)	-4.305*** (0.828)	-3.281*** (0.893)	-3.176*** (0.828)	-3.274** (1.436)	-3.332** (1.344)	-3.450** (1.337)
Log Percentage of Area Equipped for Irrigation	-0.001 (0.039)	-0.042 (0.039)	-0.173*** (0.047)	-0.138*** (0.051)	-0.009 (0.054)	-0.037 (0.056)	-0.029 (0.054)
Log Absolute Latitude		0.108*** (0.029)	0.093*** (0.030)	-0.004 (0.045)	0.023 (0.043)	0.024 (0.038)	0.030 (0.037)
Soil Fertility			0.477** (0.221)	0.416* (0.216)	0.174 (0.206)	0.353* (0.202)	0.339* (0.203)
Roughness			0.727** (0.332)	0.529 (0.352)	0.359 (0.342)	0.460 (0.303)	0.522* (0.297)
Elevation			-0.116 (0.088)	-0.135 (0.090)	-0.010 (0.108)	-0.072 (0.100)	-0.066 (0.094)
Average Distance to Nearest Waterway			-0.155* (0.080)	-0.219*** (0.083)	-0.160* (0.085)	-0.067 (0.091)	-0.047 (0.092)
Percentage of Arable Land			0.006** (0.003)	0.004 (0.003)	0.002 (0.003)	0.003 (0.003)	0.003 (0.003)
Temperature				-0.016*** (0.006)	-0.007 (0.010)	-0.009 (0.010)	-0.014 (0.010)
Colony							0.259* (0.150)
Continental FE	No	No	No	No	Yes	Yes	Yes
Legal Origin FE	No	No	No	No	No	Yes	Yes
<i>N</i>	145	145	145	145	145	145	145
Adjusted <i>R</i> <sup>2</sup>	0.061	0.109	0.296	0.334	0.400	0.454	0.469

This table presents the results of a series of 2SLS regression analyses, on the contemporary country level, of a measure of contemporary autocracy on predicted genetic diversity, instrumented by the migratory distance from East Africa to the country, conditional on a range of control variables. Specifications marked with “Continental FE” accounts for sub-Saharan Africa, Latin America, and continental fixed effects. Heteroscedasticity-consistent standard errors are reported in parentheses. \*\*\* Significant at the 1 percent level. \*\* Significant at the 5 percent level. \* Significant at the 10 percent level.

This table establishes that the findings in Table 12 are robust to accounting for the irrigation potential.

Table B.32: Predicted Diversity and Constraint on the Executive — Accounting for Percentage of Land near a Waterway

	Log Constraint on Chief Executive						
	(1)	(2)	(3)	(4)	(5)	(6)	(7)
Predicted Genetic Diversity	-3.116*** (0.855)	-3.251*** (0.876)	-2.773*** (0.889)	-2.812*** (0.873)	-3.278** (1.444)	-3.364** (1.352)	-3.488** (1.339)
Percentage of Land Near a Waterway	0.344*** (0.089)	0.306*** (0.093)	0.086 (0.151)	-0.018 (0.144)	0.016 (0.136)	-0.026 (0.133)	-0.047 (0.134)
Log Absolute Latitude		0.068** (0.030)	0.050 (0.031)	-0.059 (0.042)	0.022 (0.043)	0.018 (0.038)	0.025 (0.038)
Soil Fertility			0.485* (0.246)	0.418* (0.236)	0.163 (0.211)	0.314 (0.208)	0.313 (0.210)
Roughness			0.052 (0.357)	0.055 (0.359)	0.327 (0.353)	0.405 (0.323)	0.504 (0.320)
Elevation			-0.028 (0.120)	-0.111 (0.120)	-0.001 (0.130)	-0.074 (0.125)	-0.080 (0.120)
Average Distance to Nearest Waterway			-0.144 (0.098)	-0.254*** (0.097)	-0.155* (0.093)	-0.078 (0.100)	-0.064 (0.102)
Percentage of Arable Land			0.002 (0.002)	0.001 (0.002)	0.002 (0.003)	0.002 (0.002)	0.002 (0.002)
Temperature				-0.020*** (0.006)	-0.007 (0.010)	-0.010 (0.010)	-0.016 (0.010)
Colony							0.268* (0.147)
Continental FE	No	No	No	No	Yes	Yes	Yes
Legal Origin FE	No	No	No	No	No	Yes	Yes
<i>N</i>	145	145	145	145	145	145	145
Adjusted <i>R</i> <sup>2</sup>	0.156	0.174	0.218	0.287	0.400	0.452	0.468

This table presents the results of a series of 2SLS regression analyses, on the contemporary country level, of a measure of contemporary autocracy on predicted genetic diversity, instrumented by the migratory distance from East Africa to the country, conditional on a range of control variables. Specifications marked with “Continental FE” accounts for sub-Saharan Africa, Latin America, and continental fixed effects. Heteroscedasticity-consistent standard errors are reported in parentheses. \*\*\* Significant at the 1 percent level. \*\* Significant at the 5 percent level. \* Significant at the 10 percent level.

This table establishes that the findings in Table 12 are robust to accounting for the percentage of land near a waterway.

Table B.33: Predicted Diversity and Constraint on the Executive — Accounting for the Inequality in Land Suitability

	Log Constraint on Chief Executive						
	(1)	(2)	(3)	(4)	(5)	(6)	(7)
Predicted Genetic Diversity	-3.863*** (0.829)	-3.891*** (0.845)	-2.746*** (0.890)	-2.768*** (0.869)	-3.549** (1.455)	-3.590*** (1.364)	-3.703*** (1.346)
Land Suitability Gini	-0.233 (0.150)	-0.256* (0.144)	0.460** (0.201)	0.304 (0.198)	0.263 (0.192)	0.162 (0.193)	0.110 (0.196)
Log Absolute Latitude		0.100*** (0.029)	0.027 (0.031)	-0.065 (0.042)	0.009 (0.042)	0.008 (0.038)	0.015 (0.038)
Soil Fertility			0.920*** (0.264)	0.752*** (0.255)	0.493* (0.264)	0.550** (0.255)	0.523** (0.250)
Roughness			-0.085 (0.307)	-0.164 (0.315)	0.148 (0.316)	0.200 (0.289)	0.273 (0.278)
Elevation			-0.071 (0.096)	-0.092 (0.096)	0.002 (0.112)	-0.044 (0.106)	-0.035 (0.099)
Average Distance to Nearest Waterway			-0.244*** (0.088)	-0.290*** (0.087)	-0.195** (0.084)	-0.097 (0.091)	-0.069 (0.093)
Percentage of Arable Land			0.002 (0.002)	0.000 (0.002)	0.001 (0.003)	0.001 (0.002)	0.001 (0.002)
Temperature				-0.018*** (0.006)	-0.003 (0.010)	-0.007 (0.010)	-0.013 (0.010)
Colony							0.260* (0.150)
Continental FE	No	No	No	No	Yes	Yes	Yes
Legal Origin FE	No	No	No	No	No	Yes	Yes
N	144	144	144	144	144	144	144
Adjusted $R^2$	0.080	0.127	0.266	0.318	0.416	0.459	0.474

This table presents the results of a series of 2SLS regression analyses, on the contemporary country level, of a measure of contemporary autocracy on predicted genetic diversity, instrumented by the migratory distance from East Africa to the country, conditional on a range of control variables. Specifications marked with “Continental FE” accounts for sub-Saharan Africa, Latin America, and continental fixed effects. Heteroscedasticity-consistent standard errors are reported in parentheses. \*\*\* Significant at the 1 percent level. \*\* Significant at the 5 percent level. \* Significant at the 10 percent level.

This table establishes that the findings in Table 12 are robust to accounting for the inequality of land suitability (i.e., the Gini coefficient of land suitability).

Table B.34: Predicted Diversity and Constraint on the Executive — Accounting for Percentages of Population Living in Various Climate Zones

	Log Constraint on Chief Executive						
	(1)	(2)	(3)	(4)	(5)	(6)	(7)
Predicted Genetic Diversity	-3.926*** (0.888)	-3.864*** (0.908)	-3.369*** (0.985)	-3.172*** (0.985)	-3.066** (1.497)	-3.238** (1.413)	-3.405** (1.406)
Percentage of Population Living in Temperate Zones	0.587*** (0.090)	0.578*** (0.103)	0.477*** (0.105)	0.377*** (0.139)	0.134 (0.176)	0.044 (0.182)	0.005 (0.183)
Percentage of Population Living in Tropical Zones	0.011 (0.165)	0.028 (0.186)	0.041 (0.200)	0.021 (0.202)	-0.082 (0.184)	-0.020 (0.169)	0.020 (0.166)
Percentage of Population Living in Tropical and Subtropical Zones	0.198 (0.173)	0.198 (0.174)	0.107 (0.181)	0.115 (0.182)	0.119 (0.157)	0.047 (0.150)	0.009 (0.142)
Log Absolute Latitude		0.013 (0.051)	-0.004 (0.053)	-0.025 (0.058)	0.023 (0.057)	0.022 (0.050)	0.033 (0.050)
Soil Fertility			0.278 (0.234)	0.290 (0.233)	0.126 (0.206)	0.294 (0.205)	0.301 (0.209)
Roughness			0.028 (0.318)	0.024 (0.321)	0.333 (0.335)	0.373 (0.314)	0.451 (0.308)
Elevation			0.027 (0.097)	-0.007 (0.108)	0.007 (0.114)	-0.053 (0.107)	-0.051 (0.099)
Average Distance to Nearest Waterway			-0.101 (0.079)	-0.141 (0.087)	-0.126 (0.081)	-0.060 (0.088)	-0.049 (0.090)
Percentage of Arable Land			0.000 (0.002)	0.000 (0.002)	0.002 (0.003)	0.002 (0.002)	0.002 (0.002)
Temperature				-0.007 (0.007)	-0.004 (0.009)	-0.008 (0.010)	-0.015 (0.010)
Colony							0.265* (0.151)
Continental FE	No	No	No	No	Yes	Yes	Yes
Legal Origin FE	No	No	No	No	No	Yes	Yes
N	145	145	145	145	145	145	145
Adjusted $R^2$	0.311	0.306	0.309	0.309	0.395	0.443	0.459

This table presents the results of a series of 2SLS regression analyses, on the contemporary country level, of a measure of contemporary autocracy on predicted genetic diversity, instrumented by the migratory distance from East Africa to the country, conditional on a range of control variables. Specifications marked with “Continental FE” accounts for sub-Saharan Africa, Latin America, and continental fixed effects. Heteroscedasticity-consistent standard errors are reported in parentheses. \*\*\* Significant at the 1 percent level. \*\* Significant at the 5 percent level. \* Significant at the 10 percent level.

This table establishes that the findings in Table 12 are robust to accounting for the percentages of population living in various climate zones.



Table B.35: Predicted Diversity and Constraint on the Executive — Accounting for Colonizer Nation

	Log Constraint on Chief Executive					
	(1)	(2)	(3)	(4)	(5)	(6)
Predicted Genetic Diversity	-3.442*** (1.159)	-3.293*** (1.102)	-2.869** (1.131)	-2.739** (1.140)	-4.115** (1.606)	-3.648** (1.604)
British Colony	-0.072 (0.102)	-0.092 (0.095)	0.001 (0.109)	-0.006 (0.103)	0.163 (0.109)	0.051 (0.152)
French Colony	-0.223** (0.098)	-0.223** (0.092)	-0.130 (0.106)	-0.077 (0.113)	0.078 (0.096)	0.109 (0.103)
Other Colony	-0.052 (0.114)	-0.134 (0.107)	-0.107 (0.118)	-0.259** (0.114)	-0.105 (0.111)	-0.044 (0.119)
Non-colony	0.122 (0.104)	0.032 (0.101)	0.068 (0.099)	-0.076 (0.096)	0.029 (0.105)	-0.095 (0.123)
Log Absolute Latitude		0.092*** (0.028)	0.057** (0.028)	-0.052 (0.041)	0.014 (0.040)	0.014 (0.039)
Soil Fertility			0.450* (0.258)	0.331 (0.240)	0.187 (0.199)	0.310 (0.210)
Roughness			0.166 (0.321)	0.150 (0.320)	0.421 (0.314)	0.330 (0.300)
Elevation			-0.046 (0.090)	-0.074 (0.087)	0.014 (0.104)	0.005 (0.105)
Average Distance to Nearest Waterway			-0.123 (0.091)	-0.206** (0.087)	-0.118 (0.087)	-0.051 (0.091)
Percentage of Arable Land			0.003 (0.003)	0.003 (0.003)	0.003 (0.003)	0.002 (0.003)
Temperature				-0.025*** (0.006)	-0.011 (0.009)	-0.012 (0.010)
Continental FE	No	No	No	No	Yes	Yes
Legal Origin FE	No	No	No	No	No	Yes
N	142	142	142	142	142	142
Adjusted $R^2$	0.108	0.140	0.235	0.329	0.439	0.470

This table presents the results of a series of 2SLS regression analyses, on the contemporary country level, of a measure of contemporary autocracy on predicted genetic diversity, instrumented by the migratory distance from East Africa to the country, conditional on a range of control variables. Specifications marked with “Continental FE” accounts for sub-Saharan Africa, Latin America, and continental fixed effects. Heteroscedasticity-consistent standard errors are reported in parentheses. \*\*\* Significant at the 1 percent level. \*\* Significant at the 5 percent level. \* Significant at the 10 percent level.

This table establishes that the findings in Table 12 are robust to accounting for colonizer nation.

Table B.36: Predicted Diversity and Constraint on the Executive — Accounting for Colonial Duration

	Log Constraint on Chief Executive						
	(1)	(2)	(3)	(4)	(5)	(6)	(7)
Predicted Genetic Diversity	-3.565*** (0.939)	-3.137*** (0.927)	-2.079** (1.035)	-1.756* (0.985)	-2.840* (1.456)	-2.966** (1.373)	-3.134** (1.370)
Colonial Duration	0.022 (0.017)	0.044*** (0.014)	0.035** (0.017)	0.049*** (0.014)	0.062*** (0.015)	0.050*** (0.015)	0.040*** (0.013)
Log Absolute Latitude		0.117*** (0.028)	0.075** (0.031)	-0.044 (0.042)	0.035 (0.041)	0.029 (0.037)	0.033 (0.037)
Soil Fertility			0.464* (0.236)	0.354 (0.219)	0.114 (0.191)	0.245 (0.194)	0.255 (0.198)
Roughness			0.179 (0.308)	0.089 (0.311)	0.445 (0.305)	0.459 (0.287)	0.507* (0.284)
Elevation			-0.056 (0.091)	-0.095 (0.091)	-0.016 (0.106)	-0.061 (0.101)	-0.058 (0.097)
Average Distance to Nearest Waterway			-0.167* (0.091)	-0.253*** (0.088)	-0.147* (0.085)	-0.066 (0.091)	-0.051 (0.092)
Percentage of Arable Land			0.002 (0.002)	0.001 (0.002)	0.001 (0.002)	0.001 (0.002)	0.002 (0.002)
Temperature				-0.022*** (0.005)	-0.010 (0.009)	-0.012 (0.010)	-0.016 (0.010)
Colony							0.205 (0.151)
Continental FE	No	No	No	No	Yes	Yes	Yes
Legal Origin FE	No	No	No	No	No	Yes	Yes
N	145	145	145	145	145	145	145
Adjusted $R^2$	0.068	0.128	0.232	0.320	0.434	0.473	0.480

This table presents the results of a series of 2SLS regression analyses, on the contemporary country level, of a measure of contemporary autocracy on predicted genetic diversity, instrumented by the migratory distance from East Africa to the country, conditional on a range of control variables. Specifications marked with “Continental FE” accounts for sub-Saharan Africa, Latin America, and continental fixed effects. Heteroscedasticity-consistent standard errors are reported in parentheses. \*\*\* Significant at the 1 percent level. \*\* Significant at the 5 percent level. \* Significant at the 10 percent level.

This table establishes that the findings in Table 12 are robust to accounting for colonial duration.

Table B.37: Predicted Diversity and Constraint on the Executive — Accounting for GDP

	Log Constraint on Chief Executive						
	(1)	(2)	(3)	(4)	(5)	(6)	(7)
Predicted Genetic Diversity	-3.348*** (0.857)	-3.460*** (0.914)	-2.467*** (0.905)	-2.629*** (0.964)	-3.677*** (1.361)	-3.440*** (1.294)	-3.608*** (1.313)
Log Income Per Capita in 2000 CE	0.112*** (0.028)	0.099*** (0.036)	0.103*** (0.036)	0.060 (0.054)	0.060 (0.048)	0.013 (0.053)	0.015 (0.050)
Log Absolute Latitude		0.034 (0.037)	-0.012 (0.037)	-0.066 (0.044)	0.022 (0.044)	0.018 (0.038)	0.027 (0.038)
Soil Fertility			0.560** (0.231)	0.471** (0.223)	0.196 (0.208)	0.312 (0.204)	0.306 (0.205)
Roughness			-0.067 (0.309)	-0.049 (0.324)	0.355 (0.323)	0.388 (0.299)	0.477 (0.292)
Elevation			0.032 (0.094)	-0.036 (0.109)	0.024 (0.109)	-0.054 (0.104)	-0.046 (0.099)
Average Distance to Nearest Waterway			-0.139 (0.092)	-0.209** (0.099)	-0.129 (0.088)	-0.067 (0.093)	-0.046 (0.093)
Percentage of Arable Land			0.003 (0.002)	0.001 (0.002)	0.003 (0.003)	0.002 (0.002)	0.002 (0.002)
Temperature				-0.014* (0.008)	-0.004 (0.010)	-0.009 (0.011)	-0.014 (0.011)
Colony							0.276* (0.151)
Continental FE	No	No	No	No	Yes	Yes	Yes
Legal Origin FE	No	No	No	No	No	Yes	Yes
<i>N</i>	144	144	144	144	144	144	144
Adjusted <i>R</i> <sup>2</sup>	0.171	0.170	0.278	0.303	0.411	0.448	0.465

This table presents the results of a series of 2SLS regression analyses, on the contemporary country level, of a measure of contemporary autocracy on predicted genetic diversity, instrumented by the migratory distance from East Africa to the country, conditional on a range of control variables. Specifications marked with “Continental FE” accounts for sub-Saharan Africa, Latin America, and continental fixed effects. Heteroscedasticity-consistent standard errors are reported in parentheses. \*\*\* Significant at the 1 percent level. \*\* Significant at the 5 percent level. \* Significant at the 10 percent level.

This table establishes that the findings in Table 12 are robust to accounting for mid-period income per capita (i.e., income per capita in year 2000).

Table B.38: Predicted Diversity and Constraint on the Executive — Accounting for Schooling

	Log Constraint on Chief Executive						
	(1)	(2)	(3)	(4)	(5)	(6)	(7)
Predicted Genetic Diversity	-3.210*** (0.659)	-3.202*** (0.681)	-2.136** (0.827)	-2.299*** (0.857)	-3.170** (1.296)	-3.450*** (1.196)	-3.442*** (1.218)
Years of Schooling	0.064*** (0.009)	0.064*** (0.013)	0.061*** (0.012)	0.048*** (0.018)	0.048** (0.019)	0.053*** (0.015)	0.053*** (0.015)
Log Absolute Latitude		-0.002 (0.038)	-0.016 (0.037)	-0.039 (0.044)	0.030 (0.045)	0.027 (0.044)	0.027 (0.044)
Soil Fertility			0.128 (0.190)	0.135 (0.190)	-0.090 (0.166)	0.004 (0.161)	0.003 (0.162)
Roughness			0.233 (0.284)	0.213 (0.290)	0.436* (0.247)	0.344 (0.221)	0.341 (0.229)
Elevation			-0.027 (0.093)	-0.055 (0.092)	-0.004 (0.086)	-0.015 (0.080)	-0.016 (0.080)
Average Distance to Nearest Waterway			-0.193** (0.095)	-0.218** (0.099)	-0.172** (0.079)	-0.102 (0.085)	-0.103 (0.085)
Percentage of Arable Land			0.002 (0.002)	0.001 (0.002)	0.002 (0.003)	0.003 (0.002)	0.003 (0.002)
Temperature				-0.007 (0.007)	0.003 (0.009)	0.000 (0.009)	0.001 (0.009)
Colony							-0.012 (0.132)
Continental FE	No	No	No	No	Yes	Yes	Yes
Legal Origin FE	No	No	No	No	No	Yes	Yes
N	110	110	110	110	110	110	110
Adjusted $R^2$	0.343	0.336	0.397	0.397	0.465	0.504	0.498

This table presents the results of a series of 2SLS regression analyses, on the contemporary country level, of a measure of contemporary autocracy on predicted genetic diversity, instrumented by the migratory distance from East Africa to the country, conditional on a range of control variables. Specifications marked with “Continental FE” accounts for sub-Saharan Africa, Latin America, and continental fixed effects. Heteroscedasticity-consistent standard errors are reported in parentheses. \*\*\* Significant at the 1 percent level. \*\* Significant at the 5 percent level. \* Significant at the 10 percent level.

This table establishes that the findings in Table 12 are robust to accounting for years of schooling.

Table B.39: Predicted Diversity and Constraint on the Executive — Accounting for Population Density in 1500

	Log Constraint on Chief Executive						
	(1)	(2)	(3)	(4)	(5)	(6)	(7)
Predicted Genetic Diversity	-4.135*** (0.846)	-4.173*** (0.852)	-2.866*** (0.879)	-2.873*** (0.863)	-3.015** (1.432)	-3.446** (1.349)	-3.530** (1.349)
Population Density in 1500 CE	0.012*** (0.003)	0.010*** (0.003)	0.005* (0.003)	0.003 (0.003)	0.007** (0.003)	0.002 (0.005)	0.002 (0.005)
Log Absolute Latitude		0.077*** (0.029)	0.055* (0.030)	-0.055 (0.042)	0.032 (0.043)	0.024 (0.037)	0.029 (0.037)
Soil Fertility			0.465* (0.248)	0.373 (0.233)	0.113 (0.202)	0.254 (0.194)	0.257 (0.197)
Roughness			0.103 (0.318)	0.023 (0.327)	0.305 (0.316)	0.389 (0.292)	0.459 (0.287)
Elevation			-0.029 (0.096)	-0.062 (0.094)	0.031 (0.105)	-0.017 (0.099)	-0.020 (0.093)
Average Distance to Nearest Waterway			-0.182* (0.094)	-0.265*** (0.088)	-0.170** (0.082)	-0.097 (0.087)	-0.075 (0.089)
Percentage of Arable Land			0.000 (0.003)	-0.000 (0.003)	0.000 (0.003)	0.001 (0.003)	0.002 (0.003)
Temperature				-0.020*** (0.005)	-0.006 (0.010)	-0.010 (0.010)	-0.014 (0.010)
Colony							0.230 (0.151)
Continental FE	No	No	No	No	Yes	Yes	Yes
Legal Origin FE	No	No	No	No	No	Yes	Yes
N	144	144	144	144	144	144	144
Adjusted $R^2$	0.130	0.155	0.227	0.295	0.419	0.465	0.476

This table presents the results of a series of 2SLS regression analyses, on the contemporary country level, of a measure of contemporary autocracy on predicted genetic diversity, instrumented by the migratory distance from East Africa to the country, conditional on a range of control variables. Specifications marked with “Continental FE” accounts for sub-Saharan Africa, Latin America, and continental fixed effects. Heteroscedasticity-consistent standard errors are reported in parentheses. \*\*\* Significant at the 1 percent level. \*\* Significant at the 5 percent level. \* Significant at the 10 percent level.

This table establishes that the findings in Table 12 are robust to accounting for population density in 1500.

Table B.40: Predicted Diversity and Constraint on the Executive — Accounting for Social Infrastructure

	Log Constraint on Chief Executive						
	(1)	(2)	(3)	(4)	(5)	(6)	(7)
Predicted Genetic Diversity	-3.395*** (0.728)	-3.582*** (0.724)	-2.553*** (0.848)	-2.974*** (0.891)	-2.345** (1.173)	-3.030*** (1.151)	-3.048** (1.159)
Social Infrastructure	0.593*** (0.088)	0.463*** (0.114)	0.445*** (0.104)	0.139 (0.173)	0.222 (0.192)	0.070 (0.240)	0.087 (0.251)
Log Absolute Latitude		0.068** (0.031)	0.043 (0.031)	-0.013 (0.041)	0.030 (0.041)	0.029 (0.039)	0.030 (0.039)
Soil Fertility			0.387 (0.244)	0.326 (0.219)	0.091 (0.180)	0.084 (0.172)	0.084 (0.173)
Roughness			0.404 (0.298)	0.400 (0.300)	0.477* (0.279)	0.538* (0.275)	0.554* (0.289)
Elevation			-0.119 (0.098)	-0.189 (0.115)	-0.158 (0.106)	-0.188* (0.106)	-0.195* (0.112)
Average Distance to Nearest Waterway			0.018 (0.125)	-0.022 (0.126)	-0.034 (0.143)	0.005 (0.145)	0.013 (0.150)
Percentage of Arable Land			0.001 (0.002)	0.001 (0.002)	0.004 (0.003)	0.003 (0.003)	0.003 (0.003)
Temperature				-0.017** (0.007)	-0.015** (0.007)	-0.018** (0.008)	-0.019** (0.009)
Colony							0.072 (0.202)
Continental FE	No	No	No	No	Yes	Yes	Yes
Legal Origin FE	No	No	No	No	No	Yes	Yes
N	108	108	108	108	108	108	108
Adjusted $R^2$	0.286	0.306	0.353	0.394	0.448	0.461	0.457

This table establishes that the findings in Table 12 are robust to accounting for social infrastructure.

Table B.41: Predicted Diversity and Constraint on the Executive — Accounting for Ethnic Fractionalization

	Log Constraint on Chief Executive						
	(1)	(2)	(3)	(4)	(5)	(6)	(7)
Predicted Genetic Diversity	-3.271*** (0.838)	-3.509*** (0.855)	-2.766*** (0.903)	-2.923*** (0.865)	-3.233** (1.450)	-3.373** (1.379)	-3.470** (1.369)
Ethnic Fractionalization	-0.373*** (0.126)	-0.265* (0.157)	-0.017 (0.175)	0.115 (0.161)	-0.010 (0.158)	0.076 (0.175)	0.087 (0.167)
Log Absolute Latitude		0.056 (0.036)	0.053 (0.034)	-0.049 (0.045)	0.022 (0.043)	0.021 (0.038)	0.029 (0.037)
Soil Fertility			0.475* (0.246)	0.410* (0.231)	0.160 (0.208)	0.328 (0.202)	0.323 (0.201)
Roughness			0.138 (0.342)	0.101 (0.349)	0.334 (0.331)	0.403 (0.304)	0.486 (0.294)
Elevation			-0.061 (0.100)	-0.117 (0.100)	-0.004 (0.112)	-0.071 (0.105)	-0.066 (0.098)
Average Distance to Nearest Waterway			-0.174* (0.095)	-0.259*** (0.091)	-0.161* (0.085)	-0.074 (0.090)	-0.054 (0.091)
Percentage of Arable Land			0.002 (0.003)	0.001 (0.003)	0.002 (0.003)	0.002 (0.003)	0.002 (0.003)
Temperature				-0.021*** (0.005)	-0.006 (0.010)	-0.010 (0.010)	-0.016* (0.009)
Colony							0.270* (0.145)
Continental FE	No	No	No	No	Yes	Yes	Yes
Legal Origin FE	No	No	No	No	No	Yes	Yes
N	144	144	144	144	144	144	144
Adjusted $R^2$	0.114	0.120	0.210	0.284	0.394	0.447	0.463

This table presents the results of a series of 2SLS regression analyses, on the contemporary country level, of a measure of contemporary autocracy on predicted genetic diversity, instrumented by the migratory distance from East Africa to the country, conditional on a range of control variables. Specifications marked with “Continental FE” accounts for sub-Saharan Africa, Latin America, and continental fixed effects. Heteroscedasticity-consistent standard errors are reported in parentheses. \*\*\* Significant at the 1 percent level. \*\* Significant at the 5 percent level. \* Significant at the 10 percent level.

This table establishes that the findings in Table 12 are robust to accounting for ethnic fractionalization.

Table B.42: Predicted Genetic Diversity and Autocracy (2013)

	Log Autocracy						
	(1)	(2)	(3)	(4)	(5)	(6)	(7)
Predicted Genetic Diversity	7.878*** (1.933)	7.938*** (1.942)	5.845*** (2.210)	5.983*** (2.218)	6.795* (3.566)	6.992** (3.173)	6.963** (3.239)
Log Absolute Latitude		-0.094 (0.060)	-0.023 (0.065)	0.158* (0.094)	0.013 (0.101)	0.023 (0.093)	0.031 (0.096)
Soil Fertility			-0.823* (0.494)	-0.681 (0.479)	-0.254 (0.407)	-0.619 (0.398)	-0.507 (0.524)
Roughness			-0.433 (0.672)	-0.226 (0.710)	-0.834 (0.716)	-0.931 (0.636)	-0.496 (0.663)
Elevation			0.098 (0.192)	0.147 (0.197)	-0.064 (0.224)	0.072 (0.199)	0.094 (0.187)
Average Distance to Nearest Waterway			0.249 (0.184)	0.378** (0.177)	0.166 (0.160)	-0.054 (0.174)	0.050 (0.157)
Percentage of Arable Land			-0.005 (0.005)	-0.003 (0.005)	-0.005 (0.005)	-0.005 (0.005)	-0.006 (0.007)
Temperature				0.032*** (0.011)	0.002 (0.018)	0.010 (0.019)	0.020 (0.017)
Colony							-0.421* (0.242)
Continental FE	No	No	No	No	Yes	Yes	Yes
Legal Origin FE	No	No	No	No	No	Yes	Yes
<i>N</i>	140	140	140	140	140	140	126
Adjusted $R^2$	0.062	0.067	0.133	0.175	0.284	0.367	0.378

This table presents the results of a series of OLS regression analyses, on the contemporary country level, of a measure of contemporary autocracy on predicted genetic diversity, conditional on a range of control variables. Specifications marked with “Continental FE” accounts for sub-Saharan Africa, Latin America, and continental fixed effects. Heteroscedasticity-consistent standard errors are reported in parentheses. \*\*\* Significant at the 1 percent level. \*\* Significant at the 5 percent level. \* Significant at the 10 percent level.



Table B.43: Predicted Diversity and Autocracy — Accounting for Irrigation Potential

	Log Autocracy						
	(1)	(2)	(3)	(4)	(5)	(6)	(7)
Predicted Genetic Diversity	9.071*** (1.801)	9.527*** (1.831)	7.273*** (1.946)	7.088*** (1.849)	6.830** (3.040)	6.921** (2.684)	7.054*** (2.690)
Log Percentage of Area Equipped for Irrigation	0.067 (0.079)	0.143* (0.081)	0.409*** (0.095)	0.345*** (0.102)	0.021 (0.108)	0.087 (0.106)	0.078 (0.106)
Log Absolute Latitude		-0.196*** (0.052)	-0.151*** (0.055)	0.020 (0.083)	-0.051 (0.081)	-0.049 (0.072)	-0.056 (0.072)
Soil Fertility			-1.227*** (0.425)	-1.118*** (0.420)	-0.441 (0.383)	-0.861** (0.382)	-0.845** (0.383)
Roughness			-1.640** (0.738)	-1.288* (0.772)	-0.889 (0.746)	-1.057 (0.643)	-1.127* (0.628)
Elevation			0.428** (0.180)	0.461** (0.184)	0.193 (0.202)	0.326* (0.183)	0.320* (0.176)
Average Distance to Nearest Waterway			0.167 (0.157)	0.281* (0.164)	0.154 (0.150)	-0.059 (0.163)	-0.081 (0.166)
Percentage of Arable Land			-0.012** (0.006)	-0.008 (0.006)	-0.004 (0.005)	-0.005 (0.005)	-0.005 (0.005)
Temperature				0.028** (0.011)	0.012 (0.017)	0.019 (0.017)	0.025 (0.017)
Colony							-0.290 (0.249)
Continental FE	No	No	No	No	Yes	Yes	Yes
Legal Origin FE	No	No	No	No	No	Yes	Yes
<i>N</i>	145	145	145	145	145	145	145
Adjusted <i>R</i> <sup>2</sup>	0.072	0.108	0.307	0.333	0.436	0.506	0.507

This table presents the results of a series of 2SLS regression analyses, on the contemporary country level, of a measure of contemporary autocracy on predicted genetic diversity, instrumented by the migratory distance from East Africa to the country, conditional on a range of control variables. Specifications marked with “Continental FE” accounts for sub-Saharan Africa, Latin America, and continental fixed effects. Heteroscedasticity-consistent standard errors are reported in parentheses. \*\*\* Significant at the 1 percent level. \*\* Significant at the 5 percent level. \* Significant at the 10 percent level.

This table establishes that the findings in Table 14 are robust to accounting for the irrigation potential.

Table B.44: Predicted Diversity and Autocracy — Accounting for Percentage of Land near a Waterway

	Log Autocracy						
	(1)	(2)	(3)	(4)	(5)	(6)	(7)
Predicted Genetic Diversity	6.945*** (1.895)	7.139*** (1.938)	6.120*** (2.042)	6.197*** (2.029)	6.847** (3.051)	7.018** (2.684)	7.163*** (2.684)
Percentage of Land Near a Waterway	-0.662*** (0.177)	-0.608*** (0.186)	-0.110 (0.323)	0.093 (0.304)	0.021 (0.272)	0.125 (0.259)	0.149 (0.264)
Log Absolute Latitude		-0.099* (0.055)	-0.055 (0.057)	0.159** (0.078)	-0.048 (0.082)	-0.035 (0.074)	-0.044 (0.074)
Soil Fertility			-1.262** (0.489)	-1.131** (0.472)	-0.426 (0.385)	-0.780** (0.391)	-0.779* (0.394)
Roughness			-0.137 (0.799)	-0.144 (0.800)	-0.862 (0.740)	-0.981 (0.656)	-1.097* (0.654)
Elevation			0.258 (0.248)	0.422* (0.245)	0.198 (0.236)	0.361 (0.218)	0.368* (0.214)
Average Distance to Nearest Waterway			0.170 (0.202)	0.386** (0.195)	0.161 (0.166)	-0.012 (0.183)	-0.028 (0.185)
Percentage of Arable Land			-0.001 (0.005)	0.001 (0.005)	-0.003 (0.005)	-0.003 (0.005)	-0.004 (0.005)
Temperature				0.039*** (0.011)	0.013 (0.017)	0.022 (0.018)	0.029 (0.018)
Colony							-0.315 (0.248)
Continental FE	No	No	No	No	Yes	Yes	Yes
Legal Origin FE	No	No	No	No	No	Yes	Yes
N	145	145	145	145	145	145	145
Adjusted $R^2$	0.149	0.155	0.203	0.264	0.436	0.504	0.506

This table presents the results of a series of 2SLS regression analyses, on the contemporary country level, of a measure of contemporary autocracy on predicted genetic diversity, instrumented by the migratory distance from East Africa to the country, conditional on a range of control variables. Specifications marked with “Continental FE” accounts for sub-Saharan Africa, Latin America, and continental fixed effects. Heteroscedasticity-consistent standard errors are reported in parentheses. \*\*\* Significant at the 1 percent level. \*\* Significant at the 5 percent level. \* Significant at the 10 percent level.

This table establishes that the findings in Table 14 are robust to accounting for the percentage of land near a waterway.

Table B.45: Predicted Diversity and Autocracy — Accounting for the Inequality in Land Suitability

	Log Autocracy						
	(1)	(2)	(3)	(4)	(5)	(6)	(7)
Predicted Genetic Diversity	8.363*** (1.823)	8.408*** (1.864)	6.026*** (2.059)	6.067*** (2.034)	7.300** (3.115)	7.393*** (2.751)	7.518*** (2.747)
Land suitability Gini	0.472 (0.297)	0.510* (0.290)	-0.992** (0.410)	-0.696* (0.416)	-0.574 (0.374)	-0.336 (0.364)	-0.278 (0.374)
Log Absolute Latitude		-0.160*** (0.052)	-0.001 (0.055)	0.173** (0.077)	-0.024 (0.081)	-0.017 (0.074)	-0.026 (0.074)
Soil Fertility			-2.183*** (0.488)	-1.864*** (0.483)	-1.058** (0.468)	-1.206*** (0.455)	-1.176** (0.453)
Roughness			0.226 (0.706)	0.375 (0.714)	-0.512 (0.699)	-0.559 (0.614)	-0.639 (0.598)
Elevation			0.319 (0.203)	0.359* (0.203)	0.182 (0.210)	0.277 (0.186)	0.267 (0.179)
Average Distance to Nearest Waterway			0.362** (0.174)	0.450*** (0.170)	0.228 (0.147)	0.003 (0.164)	-0.027 (0.168)
Percentage of Arable Land			-0.001 (0.005)	0.002 (0.005)	-0.002 (0.005)	-0.002 (0.005)	-0.002 (0.005)
Temperature				0.034*** (0.011)	0.006 (0.017)	0.017 (0.018)	0.023 (0.018)
Colony							-0.288 (0.251)
Continental FE	No	No	No	No	Yes	Yes	Yes
Legal Origin FE	No	No	No	No	No	Yes	Yes
N	144	144	144	144	144	144	144
Adjusted $R^2$	0.085	0.111	0.257	0.300	0.449	0.509	0.510

This table presents the results of a series of 2SLS regression analyses, on the contemporary country level, of a measure of contemporary autocracy on predicted genetic diversity, instrumented by the migratory distance from East Africa to the country, conditional on a range of control variables. Specifications marked with “Continental FE” accounts for sub-Saharan Africa, Latin America, and continental fixed effects. Heteroscedasticity-consistent standard errors are reported in parentheses. \*\*\* Significant at the 1 percent level. \*\* Significant at the 5 percent level. \* Significant at the 10 percent level.

This table establishes that the findings in Table 14 are robust to accounting for the inequality of land suitability (i.e., the Gini coefficient of land suitability).

Table B.46: Predicted Diversity and Autocracy — Accounting for Percentages of Population Living in Various Climate Zones

	Log Autocracy						
	(1)	(2)	(3)	(4)	(5)	(6)	(7)
Predicted Genetic Diversity	8.454*** (1.950)	8.432*** (2.007)	7.465*** (2.205)	7.105*** (2.209)	6.913** (3.189)	7.231** (2.868)	7.438** (2.870)
Percentage of Population Living in Temperate Zones	-1.131*** (0.175)	-1.128*** (0.193)	-0.900*** (0.220)	-0.716** (0.308)	-0.101 (0.378)	0.126 (0.391)	0.175 (0.385)
Percentage of Population Living in Tropical Zones	-0.355 (0.465)	-0.361 (0.496)	-0.247 (0.520)	-0.211 (0.519)	0.067 (0.438)	-0.068 (0.368)	-0.119 (0.366)
Percentage of Population Living in Tropical and Subtropical Zones	-0.125 (0.485)	-0.125 (0.487)	-0.008 (0.487)	-0.021 (0.487)	-0.026 (0.392)	0.115 (0.332)	0.162 (0.329)
Log Absolute Latitude		-0.004 (0.094)	0.059 (0.099)	0.097 (0.106)	-0.031 (0.102)	-0.032 (0.091)	-0.046 (0.091)
Soil Fertility			-0.881* (0.482)	-0.902* (0.478)	-0.403 (0.386)	-0.802** (0.387)	-0.810** (0.393)
Roughness			0.034 (0.718)	0.042 (0.727)	-0.847 (0.724)	-0.893 (0.655)	-0.989 (0.644)
Elevation			0.102 (0.208)	0.165 (0.227)	0.184 (0.218)	0.323 (0.201)	0.321* (0.193)
Average Distance to Nearest Waterway			0.085 (0.156)	0.159 (0.177)	0.130 (0.150)	-0.022 (0.166)	-0.035 (0.169)
Percentage of Arable Land			0.002 (0.005)	0.002 (0.005)	-0.003 (0.005)	-0.003 (0.005)	-0.003 (0.005)
Temperature				0.013 (0.015)	0.010 (0.017)	0.024 (0.019)	0.032 (0.020)
Colony							-0.329 (0.247)
Continental FE	No	No	No	No	Yes	Yes	Yes
Legal Origin FE	No	No	No	No	No	Yes	Yes
N	145	145	145	145	145	145	145
Adjusted $R^2$	0.284	0.279	0.282	0.280	0.428	0.496	0.499

This table presents the results of a series of 2SLS regression analyses, on the contemporary country level, of a measure of contemporary autocracy on predicted genetic diversity, instrumented by the migratory distance from East Africa to the country, conditional on a range of control variables. Specifications marked with “Continental FE” accounts for sub-Saharan Africa, Latin America, and continental fixed effects. Heteroscedasticity-consistent standard errors are reported in parentheses. \*\*\* Significant at the 1 percent level. \*\* Significant at the 5 percent level. \* Significant at the 10 percent level.

This table establishes that the findings in Table 14 are robust to accounting for the percentages of population living in various climate zones.

Table B.47: Predicted Diversity and Autocracy — Accounting for Colonizer Nation

	Log Autocracy					
	(1)	(2)	(3)	(4)	(5)	(6)
Predicted Genetic Diversity	5.762** (2.628)	5.521** (2.592)	4.916* (2.606)	4.671* (2.631)	8.101** (3.293)	6.799** (3.084)
British Colony	0.412* (0.226)	0.444** (0.218)	0.234 (0.237)	0.247 (0.229)	-0.143 (0.261)	0.168 (0.311)
French Colony	0.670*** (0.242)	0.670*** (0.238)	0.504* (0.257)	0.406 (0.267)	0.049 (0.256)	-0.030 (0.266)
Other Colony	0.306 (0.229)	0.440** (0.222)	0.345 (0.243)	0.630** (0.245)	0.252 (0.261)	0.100 (0.274)
Non-colony	0.039 (0.231)	0.185 (0.228)	0.054 (0.220)	0.323 (0.214)	0.050 (0.241)	0.391 (0.262)
Log Absolute Latitude		-0.149*** (0.055)	-0.062 (0.056)	0.145* (0.077)	-0.033 (0.080)	-0.034 (0.075)
Soil Fertility			-1.093** (0.511)	-0.868* (0.484)	-0.444 (0.387)	-0.755* (0.412)
Roughness			-0.263 (0.740)	-0.232 (0.737)	-1.003 (0.684)	-0.764 (0.617)
Elevation			0.294 (0.200)	0.348* (0.196)	0.193 (0.200)	0.217 (0.193)
Average Distance to Nearest Waterway			0.102 (0.183)	0.259 (0.173)	0.077 (0.155)	-0.100 (0.163)
Percentage of Arable Land			-0.004 (0.005)	-0.004 (0.005)	-0.005 (0.005)	-0.004 (0.005)
Temperature				0.047*** (0.011)	0.020 (0.016)	0.022 (0.017)
Continental FE	No	No	No	No	Yes	Yes
Legal Origin FE	No	No	No	No	No	Yes
N	142	142	142	142	142	142
Adjusted $R^2$	0.119	0.136	0.223	0.298	0.448	0.511

This table presents the results of a series of 2SLS regression analyses, on the contemporary country level, of a measure of contemporary autocracy on predicted genetic diversity, instrumented by the migratory distance from East Africa to the country, conditional on a range of control variables. Specifications marked with “Continental FE” accounts for sub-Saharan Africa, Latin America, and continental fixed effects. Heteroscedasticity-consistent standard errors are reported in parentheses. \*\*\* Significant at the 1 percent level. \*\* Significant at the 5 percent level. \* Significant at the 10 percent level.

This table establishes that the findings in Table 14 are robust to accounting for colonizer nation.

Table B.48: Predicted Diversity and Autocracy — Accounting for Colonial Duration

	Log Autocracy						
	(1)	(2)	(3)	(4)	(5)	(6)	(7)
Predicted Genetic Diversity	7.149*** (2.069)	6.389*** (2.147)	4.330* (2.379)	3.691 (2.270)	5.794* (3.078)	6.029** (2.742)	6.137** (2.743)
Colonial Duration	-0.073** (0.033)	-0.112*** (0.033)	-0.087** (0.035)	-0.116*** (0.033)	-0.148*** (0.032)	-0.121*** (0.034)	-0.115*** (0.036)
Log Absolute Latitude		-0.208*** (0.050)	-0.111** (0.054)	0.123 (0.075)	-0.080 (0.072)	-0.064 (0.068)	-0.066 (0.069)
Soil Fertility			-1.191** (0.464)	-0.974** (0.431)	-0.296 (0.344)	-0.602* (0.359)	-0.609* (0.365)
Roughness			-0.352 (0.692)	-0.174 (0.695)	-1.094* (0.642)	-1.062* (0.581)	-1.092* (0.583)
Elevation			0.285 (0.188)	0.361* (0.190)	0.207 (0.195)	0.302* (0.179)	0.300* (0.177)
Average Distance to Nearest Waterway			0.195 (0.178)	0.365** (0.172)	0.121 (0.149)	-0.060 (0.161)	-0.069 (0.164)
Percentage of Arable Land			-0.001 (0.005)	0.001 (0.004)	-0.002 (0.004)	-0.002 (0.004)	-0.002 (0.004)
Temperature				0.044*** (0.010)	0.021 (0.016)	0.027 (0.017)	0.029 (0.018)
Colony							-0.132 (0.265)
Continental FE	No	No	No	No	Yes	Yes	Yes
Legal Origin FE	No	No	No	No	No	Yes	Yes
N	145	145	145	145	145	145	145
Adjusted $R^2$	0.086	0.129	0.226	0.306	0.481	0.533	0.530

This table presents the results of a series of 2SLS regression analyses, on the contemporary country level, of a measure of contemporary autocracy on predicted genetic diversity, instrumented by the migratory distance from East Africa to the country, conditional on a range of control variables. Specifications marked with “Continental FE” accounts for sub-Saharan Africa, Latin America, and continental fixed effects. Heteroscedasticity-consistent standard errors are reported in parentheses. \*\*\* Significant at the 1 percent level. \*\* Significant at the 5 percent level. \* Significant at the 10 percent level.

This table establishes that the findings in Table 14 are robust to accounting for colonial duration.

Table B.49: Predicted Diversity and Autocracy — Accounting for GDP

	Log Autocracy						
	(1)	(2)	(3)	(4)	(5)	(6)	(7)
Predicted Genetic Diversity	7.605*** (1.900)	7.725*** (1.978)	5.671*** (2.012)	5.996*** (2.126)	7.595** (2.981)	6.897** (2.719)	6.300** (3.023)
Log Income Per Capita in 2000	-0.201*** (0.057)	-0.187*** (0.070)	-0.183** (0.071)	-0.097 (0.102)	-0.092 (0.092)	0.027 (0.098)	0.078 (0.099)
Log Absolute Latitude		-0.037 (0.067)	0.057 (0.067)	0.166** (0.079)	-0.050 (0.082)	-0.038 (0.073)	-0.050 (0.078)
Soil Fertility			-1.375*** (0.469)	-1.196*** (0.456)	-0.472 (0.387)	-0.753* (0.383)	-0.726 (0.451)
Roughness			0.099 (0.697)	0.063 (0.725)	-0.873 (0.675)	-0.875 (0.606)	-0.736 (0.568)
Elevation			0.134 (0.205)	0.271 (0.232)	0.137 (0.204)	0.315 (0.194)	0.364** (0.174)
Average Distance to Nearest Waterway			0.147 (0.185)	0.288 (0.195)	0.104 (0.155)	-0.042 (0.166)	0.006 (0.151)
Percentage of Arable Land			-0.003 (0.005)	-0.000 (0.005)	-0.005 (0.005)	-0.003 (0.005)	-0.004 (0.006)
Temperature				0.029* (0.016)	0.007 (0.018)	0.021 (0.019)	0.032** (0.016)
Colony							-0.460** (0.198)
Continental FE	No	No	No	No	Yes	Yes	Yes
Legal Origin FE	No	No	No	No	No	Yes	Yes
<i>N</i>	144	144	144	144	144	144	129
Adjusted <i>R</i> <sup>2</sup>	0.154	0.150	0.252	0.276	0.441	0.496	0.528

This table presents the results of a series of 2SLS regression analyses, on the contemporary country level, of a measure of contemporary autocracy on predicted genetic diversity, instrumented by the migratory distance from East Africa to the country, conditional on a range of control variables. Specifications marked with “Continental FE” accounts for sub-Saharan Africa, Latin America, and continental fixed effects. Heteroscedasticity-consistent standard errors are reported in parentheses. \*\*\* Significant at the 1 percent level. \*\* Significant at the 5 percent level. \* Significant at the 10 percent level.

This table establishes that the findings in Table 14 are robust to accounting for mid-period income per capita (i.e., income per capita in year 2000).

Table B.50: Predicted Diversity and Autocracy — Accounting for Schooling

	Log Autocracy						
	(1)	(2)	(3)	(4)	(5)	(6)	(7)
Predicted Genetic Diversity	7.913*** (1.656)	7.710*** (1.678)	5.727*** (1.960)	6.132*** (2.074)	8.162*** (2.917)	8.646*** (2.470)	8.578*** (2.465)
Years of schooling	-0.120*** (0.019)	-0.129*** (0.026)	-0.114*** (0.024)	-0.082** (0.039)	-0.081** (0.037)	-0.097*** (0.031)	-0.098*** (0.031)
Log Absolute Latitude		0.050 (0.067)	0.081 (0.064)	0.137 (0.086)	-0.051 (0.087)	-0.040 (0.082)	-0.038 (0.083)
Soil Fertility			-0.630 (0.432)	-0.647 (0.433)	0.027 (0.335)	-0.249 (0.319)	-0.243 (0.319)
Roughness			-0.385 (0.651)	-0.336 (0.676)	-0.995* (0.581)	-0.633 (0.485)	-0.604 (0.498)
Elevation			0.237 (0.220)	0.305 (0.217)	0.173 (0.180)	0.175 (0.154)	0.177 (0.156)
Average Distance to Nearest Waterway			0.221 (0.230)	0.281 (0.237)	0.146 (0.165)	-0.051 (0.170)	-0.046 (0.172)
Percentage of Arable Land			-0.001 (0.005)	-0.000 (0.005)	-0.005 (0.005)	-0.007 (0.005)	-0.007 (0.005)
Temperature				0.018 (0.016)	-0.005 (0.018)	-0.000 (0.017)	-0.002 (0.017)
Colony							0.104 (0.218)
Continental FE	No	No	No	No	Yes	Yes	Yes
Legal Origin FE	No	No	No	No	No	Yes	Yes
N	110	110	110	110	110	110	110
Adjusted $R^2$	0.299	0.295	0.340	0.341	0.483	0.557	0.553

This table presents the results of a series of 2SLS regression analyses, on the contemporary country level, of a measure of contemporary autocracy on predicted genetic diversity, instrumented by the migratory distance from East Africa to the country, conditional on a range of control variables. Specifications marked with “Continental FE” accounts for sub-Saharan Africa, Latin America, and continental fixed effects. Heteroscedasticity-consistent standard errors are reported in parentheses. \*\*\* Significant at the 1 percent level. \*\* Significant at the 5 percent level. \* Significant at the 10 percent level.

This table establishes that the findings in Table 14 are robust to accounting for years of schooling.



Table B.51: Predicted Diversity and Autocracy — Accounting for Population Density in 1500

	Log Autocracy						
	(1)	(2)	(3)	(4)	(5)	(6)	(7)
Predicted Genetic Diversity	8.928*** (1.883)	8.988*** (1.904)	6.247*** (2.037)	6.260*** (2.018)	6.253** (3.047)	7.275*** (2.720)	7.366*** (2.734)
Population Density in 1500 CE	-0.020*** (0.006)	-0.017*** (0.006)	-0.008 (0.006)	-0.004 (0.006)	-0.013** (0.006)	0.001 (0.009)	0.001 (0.009)
Log Absolute Latitude		-0.121** (0.053)	-0.060 (0.055)	0.153* (0.078)	-0.065 (0.083)	-0.040 (0.073)	-0.047 (0.073)
Soil Fertility			-1.231** (0.493)	-1.052** (0.467)	-0.341 (0.374)	-0.682* (0.371)	-0.685* (0.375)
Roughness			-0.195 (0.710)	-0.038 (0.725)	-0.775 (0.670)	-0.889 (0.597)	-0.965 (0.590)
Elevation			0.254 (0.205)	0.318 (0.203)	0.134 (0.195)	0.235 (0.176)	0.237 (0.169)
Average Distance to Nearest Waterway			0.220 (0.189)	0.382** (0.178)	0.159 (0.149)	-0.011 (0.157)	-0.034 (0.160)
Percentage of Arable Land			0.001 (0.005)	0.002 (0.005)	-0.000 (0.005)	-0.003 (0.005)	-0.004 (0.005)
Temperature				0.038*** (0.011)	0.012 (0.017)	0.022 (0.017)	0.027 (0.018)
Colony							-0.251 (0.246)
Continental FE	No	No	No	No	Yes	Yes	Yes
Legal Origin FE	No	No	No	No	No	Yes	Yes
N	144	144	144	144	144	144	144
Adjusted $R^2$	0.113	0.125	0.201	0.261	0.446	0.506	0.506

This table presents the results of a series of 2SLS regression analyses, on the contemporary country level, of a measure of contemporary autocracy on predicted genetic diversity, instrumented by the migratory distance from East Africa to the country, conditional on a range of control variables. Specifications marked with “Continental FE” accounts for sub-Saharan Africa, Latin America, and continental fixed effects. Heteroscedasticity-consistent standard errors are reported in parentheses. \*\*\* Significant at the 1 percent level. \*\* Significant at the 5 percent level. \* Significant at the 10 percent level.

This table establishes that the findings in Table 14 are robust to accounting for population density in 1500.

Table B.52: Predicted Diversity and Autocracy — Accounting for Social Infrastructure

	Log Autocracy						
	(1)	(2)	(3)	(4)	(5)	(6)	(7)
Predicted Genetic Diversity	8.062*** (1.649)	8.302*** (1.639)	5.944*** (1.899)	6.579*** (2.082)	4.972* (2.616)	6.615*** (2.481)	6.654*** (2.476)
Social Infrastructure	-1.085*** (0.191)	-0.918*** (0.251)	-0.902*** (0.230)	-0.440 (0.365)	-0.568 (0.401)	-0.077 (0.479)	-0.113 (0.498)
Log Absolute Latitude		-0.087 (0.059)	-0.026 (0.060)	0.058 (0.076)	-0.074 (0.073)	-0.069 (0.071)	-0.073 (0.071)
Soil Fertility			-1.134** (0.497)	-1.041** (0.472)	-0.349 (0.328)	-0.356 (0.320)	-0.356 (0.323)
Roughness			-0.628 (0.669)	-0.622 (0.675)	-0.780 (0.577)	-0.803 (0.553)	-0.836 (0.573)
Elevation			0.461* (0.238)	0.566** (0.265)	0.436* (0.224)	0.452** (0.214)	0.466** (0.219)
Average Distance to Nearest Waterway			-0.146 (0.244)	-0.085 (0.259)	-0.023 (0.277)	-0.086 (0.276)	-0.102 (0.281)
Percentage of Arable Land			0.002 (0.005)	0.003 (0.005)	-0.004 (0.006)	-0.003 (0.005)	-0.003 (0.005)
Temperature				0.026* (0.014)	0.016 (0.012)	0.019 (0.014)	0.021 (0.016)
Colony							-0.155 (0.329)
Continental FE	No	No	No	No	Yes	Yes	Yes
Legal Origin FE	No	No	No	No	No	Yes	Yes
N	108	108	108	108	108	108	108
Adjusted $R^2$	0.254	0.257	0.314	0.331	0.468	0.491	0.487

This table establishes that the findings in Table 14 are robust to accounting for social infrastructure.

Table B.53: Predicted Diversity and Autocracy — Accounting for Ethnic Fractionalization

	Log Autocracy						
	(1)	(2)	(3)	(4)	(5)	(6)	(7)
Predicted Genetic Diversity	7.475*** (1.867)	7.828*** (1.877)	6.237*** (2.020)	6.551*** (1.952)	7.046** (3.036)	7.329*** (2.731)	7.434*** (2.737)
Ethnic Fractionalization	0.627** (0.249)	0.467 (0.302)	-0.047 (0.340)	-0.311 (0.311)	-0.036 (0.294)	-0.239 (0.319)	-0.251 (0.316)
Log Absolute Latitude		-0.083 (0.065)	-0.066 (0.059)	0.138* (0.081)	-0.050 (0.082)	-0.047 (0.072)	-0.055 (0.072)
Soil Fertility			-1.293*** (0.494)	-1.163** (0.464)	-0.450 (0.385)	-0.852** (0.370)	-0.847** (0.371)
Roughness			-0.266 (0.766)	-0.193 (0.775)	-0.872 (0.691)	-0.979 (0.610)	-1.069* (0.597)
Elevation			0.313 (0.211)	0.426** (0.214)	0.207 (0.206)	0.356* (0.188)	0.351* (0.181)
Average Distance to Nearest Waterway			0.204 (0.186)	0.374** (0.179)	0.152 (0.148)	-0.051 (0.162)	-0.072 (0.164)
Percentage of Arable Land			-0.001 (0.005)	0.001 (0.005)	-0.003 (0.005)	-0.004 (0.005)	-0.004 (0.005)
Temperature				0.041*** (0.011)	0.014 (0.017)	0.025 (0.017)	0.031* (0.017)
Colony							-0.292 (0.238)
Continental FE	No	No	No	No	Yes	Yes	Yes
Legal Origin FE	No	No	No	No	No	Yes	Yes
N	144	144	144	144	144	144	144
Adjusted $R^2$	0.102	0.102	0.200	0.267	0.436	0.508	0.510

This table presents the results of a series of 2SLS regression analyses, on the contemporary country level, of a measure of contemporary autocracy on predicted genetic diversity, instrumented by the migratory distance from East Africa to the country, conditional on a range of control variables. Specifications marked with “Continental FE” accounts for sub-Saharan Africa, Latin America, and continental fixed effects. Heteroscedasticity-consistent standard errors are reported in parentheses. \*\*\* Significant at the 1 percent level. \*\* Significant at the 5 percent level. \* Significant at the 10 percent level.

This table establishes that the findings in Table 14 are robust to accounting for ethnic fractionalization.

Table B.54: Predicted Genetic Diversity and Democracy (1994–2013)

	Log Democracy						
	(1)	(2)	(3)	(4)	(5)	(6)	(7)
Predicted Genetic Diversity	-8.566*** (1.946)	-8.658*** (1.955)	-6.003*** (2.175)	-5.980*** (2.116)	-6.553* (3.333)	-6.866** (2.894)	-6.863** (3.099)
Log Absolute Latitude		0.196*** (0.062)	0.112* (0.066)	-0.137 (0.098)	0.059 (0.108)	0.043 (0.100)	0.048 (0.104)
Soil Fertility			1.132** (0.504)	0.946* (0.482)	0.309 (0.446)	0.704* (0.425)	0.593 (0.507)
Roughness			0.337 (0.715)	0.123 (0.737)	0.819 (0.733)	0.843 (0.641)	0.550 (0.639)
Elevation			-0.243 (0.202)	-0.327 (0.205)	-0.138 (0.213)	-0.284 (0.192)	-0.269 (0.183)
Average Distance to Nearest Waterway			-0.263 (0.191)	-0.435** (0.181)	-0.248 (0.160)	-0.012 (0.175)	-0.058 (0.169)
Percentage of Arable Land			0.002 (0.005)	-0.000 (0.005)	0.003 (0.006)	0.003 (0.005)	0.006 (0.006)
Temperature				-0.044*** (0.012)	-0.017 (0.018)	-0.029 (0.019)	-0.038** (0.017)
Colony							0.365 (0.229)
Continental FE	No	No	No	No	Yes	Yes	Yes
Legal Origin FE	No	No	No	No	No	Yes	Yes
<i>N</i>	145	145	145	145	145	145	130
Adjusted $R^2$	0.063	0.100	0.195	0.267	0.397	0.484	0.511

This table presents the results of a series of OLS regression analyses, on the contemporary country level, of a measure of contemporary democracy on predicted genetic diversity, conditional on a range of control variables. Specifications marked with “Continental FE” accounts for sub-Saharan Africa, Latin America, and continental fixed effects. Heteroscedasticity-consistent standard errors are reported in parentheses. \*\*\* Significant at the 1 percent level. \*\* Significant at the 5 percent level. \* Significant at the 10 percent level.

## C Definitions of main variables

This section describes the construction of the main variables.

### *Number of Levels of Jurisdictional Hierarchy*

This variable is based on variable 33 in the *Ethnographic Atlas*, denoted “Jurisdictional Hierarchy Beyond Local Community”. The Number of Levels of Jurisdictional Hierarchy variable takes on the value 1 when the original variable indicates “No levels (no political authority beyond community)”, 2 when it indicates “One levels (e.g., petty chiefdoms)”, 3 when it indicates “Two levels (e.g., larger chiefdoms)”, 4 when it indicates “Three levels (e.g., states)”, 5 when it indicates “Four levels (e.g., large states)”.

### *Genetic Diversity*

The data on observed genetic diversity on the ethnic group level comes from the newly assembled data on observed genetic diversity in 232 worldwide (predominantly indigenous) ethnic groups from Pemberton et al. (2013). The data on predicted genetic diversity on the modern country level comes from (Ashraf and Galor, 2013).

### *Social Stratification*

This variable is based on variable 66 in the *Ethnographic Atlas*, denoted “Class Stratification”. The Social Stratification variable takes on the value 0 when the original variable indicates “Absence among freemen)”, 1 when it indicates “Wealth distinctions” or “Elite (based on control of land or other resources”, and 2 when it indicates “Dual (hereditary aristocracy)” or “Complex (social classes)”.

### *Intensity of Slavery*

This variable is based on variable 66 in the *Ethnographic Atlas*, denoted “Type of Slavery”. The Intensity of Slavery variable takes on the value 0 when the original variable indicates “Absence or near absence”, 1 when it indicates “Incipient or nonhereditary” or “Reported but type not identified”, and 2 when it indicates “Hereditary and socially significant”.

### *Indigenous Autocracy*

This variable is based on variable 72 in the *Ethnographic Atlas*, denoted “Succession to the Office of Local Headman”. The Indigenous Autocracy variable takes on the value 1 when the original variable indicates “Election or other formal consensus, nonhereditary”, 2 when it indicates “Informal consensus, nonhereditary”, and 3 when it indicates “Patrilineal heir”, “Matrilineal heir”, “Appointment by higher authority, nonhereditary”, “Seniority or age, nonhereditary”, “Influence, wealth or social status, nonhereditary”, or “Absence of any such office”.

### *Executive Constraints*

This variable come from the Polity IV Project dataset (Marshall et al., 2014). The variable takes on an integer values from 1 to 7, indicating increasing extends of “institutionalized constraints on the decision-making powers of chief executives, whether individuals or collectivities” (Marshall et al., 2014).

### *Autocracy*

This variable come from the Polity IV Project dataset (Marshall et al., 2014). The variable takes on the value 0 or an integer value from 1 to 10, indicating increasing extends of “the presence of a distinctive set of political characteristics” characterizing autocracy. According to the definition, in their mature form, “autocracies sharply restrict or suppress competitive political participation” (Marshall et al., 2014).

### *Migratory Distance from East Africa*

In estimating the migratory distance from Addis Ababa (East Africa) for each of the ethnic groups in the data, the shortest traversable paths from Addis Ababa to the interior centroid of each ethnic group was computed. Given the limited ability of humans to travel across large bodies of water, the traversable area included bodies of water at a distance of 100km from land mass (excluding migration from Africa into Europe via Italy or Spain). Furthermore, for ethnicities that reside in a distance that exceed 100km from the traversable area connected to Addis Ababa, the distance was computed in the following way. A point set was created by clipping the extended traversable area to world boundaries and aggregating it to a resolution of 2,096,707 pixels which was then converted into points. For each ethnicity centroid, the nearest four distance points were identified and the great circle distance from the ethnicity centroid to those points were calculated. These distances was then added to the migratory distance from Addis Ababa at the distance point to obtain the total migratory distance from the ethnicity centroid from Addis Ababa to each of these four points. The point with the shortest total migratory distance from Addis Ababa was selected to represent the total migratory distance for the ethnicity.

### *Control Variables*

The control variables come from a range of sources. For the analysis of the pre-colonial era, the developed geo-referenced dataset on within-ethnic-group genetic diversity and ethnographic information contains a wide range of variables (see Ashraf et al., 2015, for more information on the data). Since the data is partly based on Fenske (2013), it includes a range of geographic variables derived by him, in addition to geographic variables derived by the authors. These geographic variables include elevation, ruggedness, length and density of rivers in the area, share of desert on the area, as well as the average climatic suitability for agriculture (as constructed by Ramankutty et al. (2002) and also used by Michalopoulos (2012)), average temperature, and average diurnal temperature range over the period 1901–2012 as constructed by the Climate Research Unit (see Harris et al., 2014).